

Rebecca Barnard
SNA Forestry Certification Manager
SFI 2022 Annual Conference
Madison, WI – June 14-17

sappi

Benefits and Advantages of PEFC Endorsement – Perspectives from a Dual SFI / PEFC Certified Organization

- Sappi's Commitment to Forest Certification
- Benefits & Advantages of PEFC Endorsement
- Navigating Implementation Complexities

Sappi's Commitment to Sustainability & Forest Certification



As a global provider, we offer brand consistency and worldwide sales support.

Sappi North America

- 3 Paper mills
- 1 Dissolving pulp mill
- 1 High-yield pulp mill
- 4 Sales offices

Sappi Europe

- 9 Paper mills
- 15 Sales offices

Sappi Southern Africa

- 3 Paper mills
- 2 Dissolving wood pulp mills
- 1 Saw mill
- 6 Sales offices

Sappi Trading

- 2 Logistics offices
- 7 Sales offices

Sappi by the numbers

165

Years

12,800

Employees in twenty countries

2.4

Million-ton paper pulp capacity

3

Manufacturing operations on three continents

5.7

Million-ton paper capacity

Clean production - world-class assets



Cloquet Mill

- Coated Freesheet papers: 330,000 mt/yr
- Pulp Capacity: 370,000 mt/yr
- 705 employees
- **ISO 9001, 14001**

Somerset Mill

- Coated Freesheet papers: 795,000 mt/yr
- Bleached Kraft Pulp: 525,000 mt/yr
- 725 employees
- **ISO 9001, 14001, 22000**

Westbrook Mill

- Annual Production Capacity: 40,000 mt coated specialty paper
- 287 employees
- **ISO 9001, 14001**

Matane Mill

- High-yield pulp production capacity: 270,000 mt/yr
- 150 employees

SNA Multi-Site Certificates:

- **FSC® CoC / CW** (FSC-C014955)
- **PEFC CoC** (PEFC/29-31-10)

- **SFI® CoC certified**
- **SFI FS Certified**

SCE Single-Site Certificates:

- **FSC® CoC / CW** (FSC-C151943)
- **PEFC CoC** (PEFC/26-31-135)

Sappi exists to build a thriving world by unlocking the power of renewable resources to benefit people, communities, and the planet.

Our commitment to sustainability is based on being a trusted, transparent, and innovative partner in building a bio-based circular economy.

PEOPLE

Social
Responsibility

PLANET

Environmental
Responsibility

PROSPERITY

Economic
Responsibility

Sustainability drives our business philosophy. It permeates our corporate structure with formal responsibilities and defined goals — with accountability demanded from each of our business units and every part of our operations.

SNA's diverse product portfolio demonstrates a commitment to our customers and their evolving needs.

Graphics

Packaging and Specialties

Pulp



Sappi Agnostically Supports SFI, PEFC and FSC

All of Sappi North America's coated paper and packaging mills & wood procurement operations are "triple" CoC certified.

These certifications assure us and our customers that our wood suppliers are adhering to responsible forestry practices.



The mark of responsible forestry



SUSTAINABLE FORESTRY INITIATIVE

SFI-00064



All of Sappi Europe's Mills are FSC and PEFC CoC Certified.

All of Sappi South Africa's Forest Management Operations are FSC and PEFC FM and CoC Certified. *Sappi was instrumental in developing and achieving PEFC-endorsement in South Africa.*

Most of Sappi South Africa's Mills are PEFC CoC Certified *(achieved Feb, 2022).*

Forests matter!

How Sappi is promoting forests as the solution

Sustainability FAQs



Why do forests matter

The importance of forests can be seen in their contribution to the UN Sustainable Development Goals (SDGs), which are essentially a blueprint to achieve a better and more sustainable future for all.¹

Forests act as a source of food, medicine and fuel for more than a billion people (SDG 1: No poverty). Forests and trees support sustainable agriculture by, for example, stabilising soils and climate, regulating water flows, providing shade, shelter, and a habitat for pollinators and the natural predators of agricultural pests. When integrated into agricultural landscapes, forests and trees can increase agricultural productivity (SDG 2: Zero hunger). Approximately 75% of the world's accessible freshwater comes from forested watersheds (SDG 6: Clean water and sanitation). Overall, forests supply about 40 percent of global renewable energy in the form of wood fuel (SDG 7: Affordable and clean energy). Some studies suggest that forests and trees may provide around 20 percent of income for rural households in developing countries, both through cash income and by meeting subsistence needs. Non-wood forest products provide food, income, and nutritional diversity for an

estimated one in five people around the world, notably women, children, landless farmers and others in vulnerable situations. (SDG 8: Decent work and economic growth).

Acting as carbon sinks, forests absorb the equivalent of roughly two billion tonnes of carbon dioxide (CO₂) each year (SDG 13: Climate action). (To put this into perspective, in 2020, global energy CO₂ emissions were estimated at 31.5 billion tonnes).

In addition to helping to respond to climate change and protect soils and water, forests hold more than three-quarters of the world's terrestrial biodiversity (SDG 15: Life on land). This means that deforestation has serious negative impacts on biodiversity and climate change.

Sappi's business depends on forests. As forests are directly or indirectly linked to all of the SDGs, be it about poverty mitigation or gender equality, this reliance is both an opportunity and a responsibility. Our opportunity is to invest and promote healthy forests both for our benefit and the myriad of benefits they deliver to the planet. Our responsibility is to ensure that our reliance on forests does not come at the expense of other products and ecosystem services that forests provide. With our strong commitment and expertise in forestry, we believe that sourcing and using wood sustainably and responsibly is part of the solution, not the problem.

¹ Unless otherwise specified, all facts in this paragraph taken from: FAO, 2018, *The State of the World's Forests 2018 – Forest pathways to sustainable development*, Rome.

Fast facts

- Healthy, well-managed forests make a significant contribution to the UN Sustainable Development Goals.
- Sustainable forestry contributes to important ecosystem services such as carbon sequestration as well as water resources, soil and biodiversity conservation.
- At a social level, sustainable forest management contributes to livelihoods, income generation and employment.
- Our business depends on wood fibre, a renewable resource.
- We have world-class expertise in forest sciences R&D.

Forest certification

Sustainability FAQs



What is forest certification?

Forest certification is a well-established tool to ensure that responsible forest management practices are implemented in the forest,¹ and that wood from certified forests can be identified throughout the supply chain. Certification systems establish specific forest management, wood fibre sourcing, Chain of Custody tracking and marketing requirements for certified organisations; provide a framework for third-party auditing; and govern the use of promotional and product claims.

Why is forest certification important?

Certification is an important tool that enables conscious consumers to choose responsibly sourced wood-based products. It gives consumers the assurance that the wood fibre used to manufacture the products they are buying has been legally harvested in accordance with sound environmental practices, and that social aspects, such as indigenous rights, have been taken into account. Forest certification and other voluntary codes of conduct are key tools for promoting sustainable consumption and production, and for combating deforestation, forest degradation and illegal logging by providing proof of legality and responsible management, harvesting and manufacturing practices.

¹ Plantations are included in the term 'forest' in the context of forest management and sourcing.

To fully understand the fundamental importance of global, credible forest certification systems coupled with rigorous tracing practices, we need to understand the value and state of the world's forests. The sale of illegally or unsustainably harvested timber contributes to the loss of biodiversity, degraded watersheds, unhealthy forests subject to destruction from wildfires or pests and pathogens, and deforestation, not to mention the possibility of unsafe working conditions and civil/traditional rights conflicts. Deforestation leads to biodiversity losses and increased greenhouse gas emissions, as forests capture carbon dioxide (CO₂) from the air during the process of photosynthesis and store it in their leaves, wood, roots and soils, acting as 'carbon sinks'. After the oceans, forests contain the world's second-largest stores of CO₂.

Forest certification's positive impact on the world's forests is a result of the improved forest management practices in certified forests coupled with the stringent sourcing and due diligence requirements for non-certified wood fibre inputs. Certificate holders must ensure that all non-certified wood fibre inputs mixed with certified material are from controlled, non-controversial sources. This means that the impact of forest certification extends far beyond the certified forests. Additionally, forest certification requires certificate holders to implement procedures to track and trace the origin of the wood, which is necessary to drive change and support sustainable and transparent supply chains.

Fast facts

- We recognise credible third-party forest certification systems including the FSC™, PEFC, SFI® and other PEFC-endorsed systems.
- Forest certification provides assurance that our products originate from responsibly-managed forests.
- All our mills are Chain of Custody certified.
- We require suppliers to provide evidence that all wood fibre is sourced from controlled, non-controversial sources.
- Sappi's timber plantations in South Africa are both FSC and PEFC certified.
- Knowing the origin of wood is a fundamental prerequisite to ensure responsible sourcing.
- Our global goal to increase certified fibre supplied to our mills is supported by regional targets.
- We promote the increased use of certified wood fibre throughout our supply and value chains.

Our certifications

Sustainability FAQs

Assuring stakeholders

External assessments and independent third-party certifications give our stakeholders confidence that our reported performance indicators are reliable, accurate, and pertinent.

Forest certification

Forest certification provides assurance that our products originate from responsibly managed forests. All our mills are Chain of Custody (CoC) certified. Knowing the origin of wood is a fundamental prerequisite to ensure responsible wood fibre sourcing.

Available online

All our third-party issued certificates can be viewed (and downloaded) on our website at <https://www.sappi.com/certifications>

LM/ Business unit	FSC™ CoC	PEFC CoC	SFI® Certified Sourcing	SFI® CoC	ISO 9001	ISO 14001	ISO 22000	ISO 80001	ISO EMAS	ISO 45001	BBBEE	EN 15593
Sappi Europe	Affeld	✓	✓		✓	✓	✓	✓	✓	✓		✓
	Carrignano	✓	✓		✓	✓	✓	✓	✓	✓		✓
	Condino	✓	✓		✓	✓	✓	✓	✓	✓		✓
	Ehingen	✓	✓		✓	✓	✓	✓	✓	✓		✓
	Gratkorn	✓	✓		✓	✓	✓	✓	✓	✓		✓
	Kärnten	✓	✓		✓	✓	✓	✓	✓	✓		✓
	Lanshan	✓	✓		✓	✓	✓	✓	✓	✓		✓
Maastricht	✓	✓		✓	✓	✓	✓	✓	✓		✓	
Rockwell	✓	✓		✓	✓	✓	✓	✓	✓		✓	
Stockstadt	✓	✓		✓	✓	✓	✓	✓	✓		✓	
Sappi North America	Cloquet	✓	✓	✓	✓	✓	✓	✓	✓	✓		✓
	Matane	✓	✓	✓	✓	✓	✓	✓	✓	✓		✓
	Somerset	✓	✓	✓	✓	✓	✓	✓	✓	✓		✓
	Westbrook	✓	✓	✓	✓	✓	✓	✓	✓	✓		✓
Sappi Southern Africa	Forests	✓	✓		✓	✓	✓	✓	✓	✓		✓
	Ngodwana	✓	✓		✓	✓	✓	✓	✓	✓		✓
	Salcoor	✓	✓		✓	✓	✓	✓	✓	✓		✓
	Stanger	✓	✓		✓	✓	✓	✓	✓	✓		✓
	Tugela	✓	✓		✓	✓	✓	✓	✓	✓		✓
	Lomati Sawmill	✓	✓		✓	✓	✓	✓	✓	✓		✓

✓ ISO 45001 ✓ EN 15593 ✓ Certified ✓ Multi-site certificate ✓ Forest management

Fast facts

- FSC™ - Forest Stewardship Council™ is a global, not-for-profit organisation dedicated to the promotion of responsible forest management worldwide.
- PEFC - Programme for the Endorsement of Forest Certification is an international non-profit, non-governmental organisation dedicated to promoting sustainable forest management through independent third-party certification.
- SFI® - Sustainable Forestry Initiative® is a sustainability organisation that collaborates on forest-based conservation and community initiatives. The SFI® forest management standard is endorsed by PEFC.
- Sappi Papier Holding is included in Sappi Europe's FSC and PEFC, as well as Sappi North America's CoC multi-site certificates.
- ISO 9001 International Organisation for Standardisation (ISO) standards for quality management systems.
- ISO 22000 Food safety management standards.
- ISO 14001 Environmental management systems standards.
- BBBEE Broad-based black economic empowerment rating (South Africa).
- ISO 50001 Standards for energy management systems.
- EMAS The European Eco-Management and Audit Scheme is a management instrument used to evaluate, report, and improve environmental performance.
- ISO 45001 An international occupational health and safety management system.
- EN 15593 Management of Hygiene in the Production of Packaging for Foodstuffs.

Certification & SDGs

Alignment with SFI Inc. & Sappi

SUSTAINABLY MANAGED FORESTS SUPPORT THE UN SUSTAINABLE DEVELOPMENT GOALS

The Sustainable Forestry Initiative is committed to doing our part to contribute to the United Nations Sustainable Development Goals. Our work touches all 17 of the goals, but there are six in particular where we have the greatest impact.

<p>GOAL 4: ENSURE INCLUSIVE AND EQUITABLE QUALITY EDUCATION</p> <p>Project Learning Tree, an initiative of SFI, educates teachers and youth about the environment and sustainability through professional development and curriculum resources that use trees and forests as windows on the world.</p>	<p>GOAL 13: TAKE URGENT ACTION TO COMBAT CLIMATE CHANGE AND ITS IMPACTS</p> <p>SFI engages in research and grant making to identify best practices in well-managed forests to increase carbon storage and resiliency to climate change.</p>
<p>GOAL 6: ENSURE ACCESS TO WATER AND SANITATION FOR ALL</p> <p>SFI standards mandate best management practices relating to water quality and the SFI Conservation Grant Program promotes projects that help enumerate water quality and quantity in SFI certified forests.</p>	<p>GOAL 15: SUSTAINABLY USE LAND, SEA AND OCEANS, HALT AND REVERSE LAND DEGRADATION, HALT BIODIVERSITY LOSS</p> <p>SFI supports sustainable forests across chains, engages in community engagement and education to reduce deforestation, and promotes ecosystem health and protection of at-risk species.</p>
<p>GOAL 12: ENSURE SUSTAINABLE CONSUMPTION AND PRODUCTION PATTERNS</p> <p>SFI ensures the sustainability of source materials through supply chain assurances and our label elevates the visibility of sustainable practices and encourages responsible purchasing.</p>	<p>GOAL 17: STRENGTHEN IMPLEMENTATION AND GLOBAL PARTNERSHIP DEVELOPMENT</p> <p>SFI proactively collaborates with the forest brand owners, conservation groups, academic resource professionals, landowners, education local communities, Indigenous peoples, governments, and universities to promote our shared goal of sustainable forests.</p>

Building a thriving world with the SDGs

Climate action. No poverty. Responsible production and consumption. These are just some of the UN Sustainable Development Goals (SDGs) that we contribute to – as a company and as individuals.

At Sappi, we're focused on **seven of the SDGs** where we can have the biggest impact over the next five years. We're tracking our progress against ambitious targets as part of Sappi's Thrive 25 Strategy.

- Clean Water and Sanitation
- Responsible Consumption and Production
- Decent Work and Economic Growth
- Responsible Consumption and Production
- Climate Action
- Life on Land
- Partnerships for the Goals

Mutual

- #6: Clean Water & Sanitation
- #12: Responsible Consumption & Production
- #13: Climate Action
- #15: Life on Land
- #17: Partnerships for the Goals

SFI

- #4: Ensure Inclusive & Equitable Quality Education

Sappi

- #7: Affordable & Clean Energy
- #8: Decent Work & Economic Growth

Benefits & Advantages of PEFC Endorsement

International Stakeholder Members



sappi

- APP Timber
- Arauco
- Asia Pacific Resources International Holdings Ltd. (APRIL)
- Association Technique Internationale des Bois Tropicaux (ATIBT)
- Bioenergy Europe
- Building and Wood Worker's International (BWI)
- Confederation of European Forest Owners (CEPF)
- Confederation of European Paper Industries (CEPI)
- Connecting Natural Values and People (CNVP)
- Double A
- European Confederation of Agricultural, Rural and Forestry Contractors (CEETTAR)
- European Panel Federation (EPF)
- European Pulp Industry Sector Association AISBL (EPIS)
- European Timber Trade Federation (ETTF)
- European Tissue Symposium (ETS)
- International Council of Forest and Paper Associations (ICFPA)
- International Family Forestry Alliance (IFFA)
- International Paper
- Metsä Group
- Mondi
- Olam International
- Purinusa Ekapersada (APP)
- RECOFTC
- Sappi
- Smurfit Kappa
- Stora Enso
- Suzano Pulp and Paper
- Union of Silviculturists of Southern Europe (USSE)
- WestRock Company
- Weyerhaeuser Company

Sappi became a PEFC International Member in 2020.

Sappi voted YES for PEFC endorsement of the SFI CoC Standard.



Benefits & Advantages of PEFC Endorsement



- **SFI's 2022 Chain of Custody (CoC) Standard met the rigorous third-party assessment of the PEFC.** *PEFC is an international organization that endorses national forest certification systems developed collaboratively by diverse stakeholders, tailored to local priorities and conditions.*
- **Organizations certified to SFI's 2022 CoC standard can make PEFC claims and use the PEFC on-product label, giving them more options to meet customer demand around the world.** *Also applies to PEFC controlled sources.*
- **PEFC CoC certified organizations can now receive PEFC claims from SFI CoC certified organizations. PEFC claims can now include SFI-certified product.**

- *“SFI makes important contributions that address the needs of North America’s forests and communities and is a valuable national member working with PEFC to elevate the role of sustainable forestry.”*
- *“Only chain of custody certification standards that meet our rigorous criteria and that are developed in an open, transparent manner through a multi-stakeholder process are endorsed by PEFC.”*
- *“Thanks to this endorsement, customers across North America and around the world will be even more confident that products bearing the SFI Chain of Custody label come from well-managed, sustainable forests.”*

Benefits & Advantages of PEFC Endorsement

- **SFI's 2022 Chain of Custody (CoC) Standard met the rigorous third-party assessment of the PEFC.**
 - ✓ More awareness domestically of PEFC and PEFC's role in national standard endorsement.
 - ✓ More global credibility, recognition and consumer demand/support for SFI.
 - ✓ Removes perceived competition or conflicts in goals/requirements between PEFC and SFI.
 - ✓ SFI and PEFC CoC standards include similar requirements (*3rd-party audits, continuous improvement, DDS to avoid controversial sourcing, transparency, stakeholder input, compliant process, etc.*)
 - ✓ Only ~12% of the world's forests are certified! Need to recognize synergies and alignment in intent and impact. Path forward = Educate the customer to be agnostic on PEFC or SFI certification! Both ensure sustainable multiple-use forest management (*via previously-endorsed FM standards*) and provide assurances of responsible, sustainable sourcing
- **SFI CoC CHs can make PEFC claims and use the PEFC on-product label.**
- **PEFC CoC certified organizations can now receive PEFC claims from SFI CoC CHs.**
- **PEFC claims can now include SFI-certified product.**
 - ✓ = Less global marketplace confusion
 - ✓ = More options to meet customer demand around the world
 - ✓ = Increased efficiency and less complexity for global supply chains
 - ✓ = Formalize joint efforts for customer education, SDGs & conservation impact

Global Markets & Supply-Chain Joint Efforts

PEFC and SFI are partnering together to drive change and gain global recognition and credibility.

There are opportunities for more collaboration and growth.

This is exciting for North American manufacturers in emerging markets and sectors with complex supply-chains (aka Textiles).

"PEFC-certified forests absorb roughly 315 million tonnes of CO₂ every year. That is equivalent to 30% of the annual emissions of the global fashion industry."

Ana Belén Noriega Bravo, National Secretary of PEFC Spain

Forest fibres for sustainable fashion

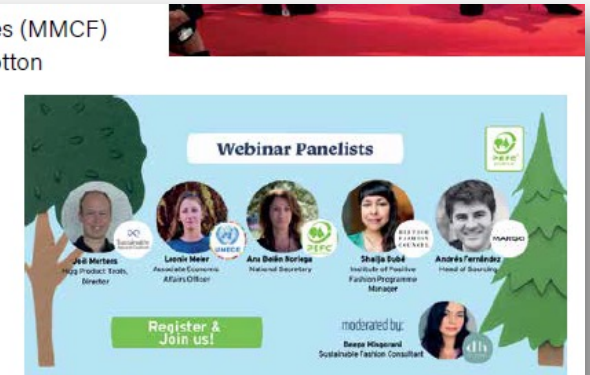
Consumers increasingly expect brands to be environmentally friendly. Across the world, the fashion industry is responding, and is looking to replace its conventional materials with sustainable alternatives. Wood-based fibres are part of the solution.



Spotlight on sustainable packaging



Man-made cellulosic fibres (MMCF) require less water than cotton and produce fewer carbon emissions than synthetic fibres. If they come from a sustainable source, they even help safeguard our forests. Together with our partners, we are working to promote the use of MMCF, to make a difference for the future of the fashion industry, our forests, and our world.



Exchange and collaboration

We hosted a Textiles Webinar, with a panel of sustainability experts from **Sustainable Apparel Coalition (SAC), UNECE/FAO, British Fashion Council, MANGO, and PEFC Spain**. They discussed the role of sustainably managed forests in mitigating climate change, and how responsibly sourced forest products can support the sector's sustainability goals.



We have joined the **UNFCCC Fashion for Global Climate Action initiative** as a signatory to the Fashion Industry Charter for Climate Action. The initiative calls on the fashion industry to acknowledge the contribution of the sector to climate change and our shared responsibility to strive towards climate neutrality.

Navigating Implementation Complexities

*(Potential for inconsistencies &
confusion if not properly messaged)*



WHAT CHANGES WITH THE PEFC ENDORSEMENT?

PEFC endorsement means that the SFI 2022 Chain of Custody Standard has been assessed and recognized as a valid certification standard to make PEFC claims and apply to use the PEFC on-product logo. These are the two key changes for certified organizations on how they track claims due to the PEFC endorsement:

1. CHANGES FOR SFI 2022 CHAIN OF CUSTODY CERTIFIED ORGANIZATIONS

SFI chain of custody certified organizations can now use their chain of custody procedures to make PEFC chain of custody claims and apply the PEFC on-product logo. SFI chain of custody certified organizations can also now track PEFC Controlled Sources for PEFC claims.

INPUTS RECOGNIZED BY SFI



SFI 2022 COC STANDARD

CLAIM DOCUMENTATION & LABEL USE

SFI CLAIMS/LABEL USE
(FOLLOWING SFI SECTION 6 RULES)



PEFC CLAIMS/LABEL USE
(FOLLOWING PEFC TRADEMARK RULES)



2. CHANGES FOR PEFC CHAIN OF CUSTODY CERTIFIED ORGANIZATIONS

PEFC chain of custody certified organizations can now receive PEFC claims from SFI chain of custody certified organizations. PEFC claims can now include SFI-certified product.

INPUTS RECOGNIZED BY PEFC



SFI 2022 COC STANDARD

PEFC COC ST 2002:2020

CLAIM DOCUMENTATION & LABEL USE

PEFC CLAIMS/LABEL USE
(FOLLOWING PEFC TRADEMARK RULES)



SFI CoC Certificate Holders can provide PEFC-certified customers with a PEFC claim (and label)

BUT...

PEFC CoC Certified Companies can NOT take a SFI claim and transition it on their end.

Hmmm...

Questions – Past & Present

Question: What does PEFC's endorsement mean for certified suppliers, manufacturers and customers?

FM Suppliers: Practically there will be no change. PEFC previously endorsed SFI, ATFS, CSA, and many other national FM standards so suppliers should be largely unaffected by this change.

CoC-Certified Manufacturers: Varies based on location, CoC status, supply-chain and market factors.

- **SFI CoC CHs** can now apply PEFC claims and on-product labels to PEFC-certified customers. There are technicalities that need to be sorted out re: auditing, adherence to PEFC rules, etc. *In theory, this will offer greater flexibility for SFI CoC CHs to meet global customer demands. Perhaps the biggest gains in efficiency will be for SFI CoC CHs based in North America who sell predominantly to NA-based customers. In these cases, there may not be a need to maintain PEFC CoC certification.*
Sappi, as a global company, will remain triple-certified for internal alignment and flexibility.
- **PEFC CoC CHs** can include SFI-certified product in their PEFC certified content claims. *However, PEFC CoC CHs can NOT transfer a SFI CoC claim into a PEFC CoC claim. Exactly how this will be managed / audited remains to be seen. Why can SFI certified content be used towards a PEFC certified content claim, however a SFI CoC claim can not be transitioned into an equivalent PEFC CoC claim by the customer?*
- **Customers:** PEFC-certified customers will have greater access to, and can now better support through their purchasing choices, responsible sourcing and certified products manufactured by North American SFI-certified companies. Leveraging certified forest content from PEFC-endorsed standards (SFI, ATFS, CSA, etc.), customers can now request a PEFC CoC claim from a SFI CoC certified manufacturer.

Questions – Past & Present

Question: “Endorsement” is not a word commonly understood in some non-English speaking languages. What does “Endorsement” mean in practicality?

Question: Wasn't the SFI CoC Standard already endorsed by PEFC?

Question: Why now? What changed? Why didn't PEFC endorse SFI's CoC standard in 2008 or since?

Question: Can a SFI CoC certified North American-based customer convert a PEFC CoC claim from a SFI CoC certified NA-manufacturer into a SFI CoC Claim?

Question: Does PEFC endorsement mean that CoC claims and on-product labels are interchangeable?

Questions – Past & Present

Question: Has PEFC approved/partnered on SFI's "Global Label" concept?

Question: What opportunities does this provide for European companies (assuming they are only PEFC-certified) selling into North America? For example, for European imports into North America sold to a SFI-certified customer, can the customer take the PEFC CoC claim and transition it to a SFI CoC claim?

Question: How will a SFI CH's compliance to the PEFC standard and label use rules be evaluated? Will this require added audit costs/scope? How will this be managed during the standard transition periods?

Question: How do you decide whether to use SFI-certified raw material to produce PEFC or SFI claims?

Question: Other than CoC claim flexibility, what additional benefits can/should PEFC and SFI leverage with this endorsement decision / announcement?

Rebecca Barnard

**Forestry Certification Manager,
Sappi North America**

Rebecca.Barnard@sappi.com

715-572-0040

**THANK
YOU**