

IDAHO BLUE MOUNTAINS ECOREGION

G1 and G2 Species Habitat Management Guidelines



INTRODUCTION

The Sustainable Forestry Initiative® (SFI) [2022 Standards](#) include requirements that promote and conserve Forests with Exceptional Conservation Value (FECV), which includes critically imperiled (G1) and imperiled (G2) species. This fact sheet summarizes the analysis of FECV habitat within this ecoregion and provides habitat management recommendations that would benefit species potentially found here.

HABITAT TYPES

- Forest Edge
- Mixed Conifer Forest
- Riparian or Stream
- Special Sites (Cliff, Grassland)

FOREST EDGE MANAGEMENT

- Protect known locations
- Buffer special sites

MIXED CONIFER FOREST MANAGEMENT

- Protect known locations
- Retain legacy trees, stumps, and logs
- Retain large diameter trees with cavities or broken tops
- Leave skips and gaps with dense shrub component
- Retain large slash into piles

RIPARIAN OR STREAM MANAGEMENT

- Protect known locations
- Maintain well vegetated riparian buffers
- Plant a diversity of both hardwood and conifer trees in the riparian zone
- Retain large diameter trees near streams and rivers
- Buffer wetlands, springs, and headwater areas

SPECIAL SITES (CLIFF, GRASSLAND) MANAGEMENT

- Protect known locations
- Buffer special sites



Northern Idaho Ground Squirrel



Jessica's Aster



Asotin Milkvetch

All management recommendations assume that operators and land managers are following all applicable BMPs, laws, and regulations.

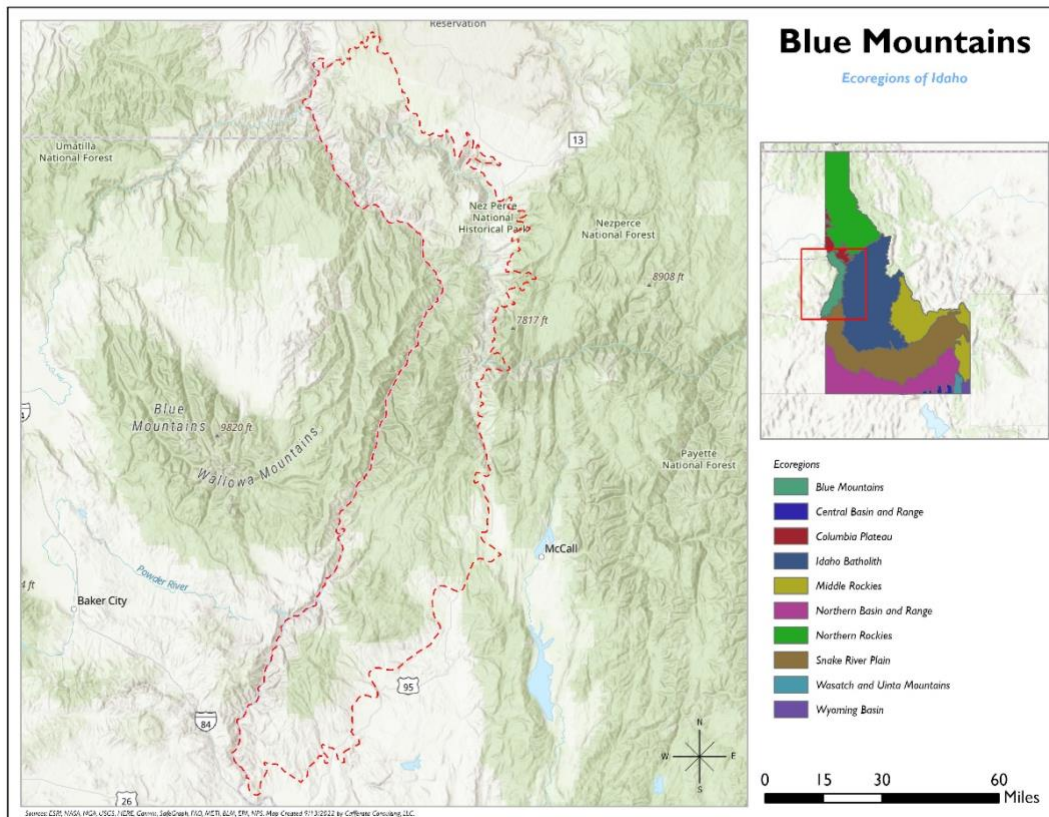
IDAHO BLUE MOUNTAINS ECOREGION

G1 and G2 Species Habitat Management Guidelines



SCIENTIFIC NAME	COMMON NAME	HABITAT	STATUS
<i>Mimulus hymenophyllus</i>	Membrane-leaved Monkeyflower	Cliff	G2
<i>Melanoplus lemurus</i>	A Spur-throat Grasshopper	Forest Edge	G1G2
<i>Melanoplus papoosense</i>	A Spur-throat Grasshopper	Forest Edge	G1G2
<i>Isoetes minima</i>	Midget Quillwort	Forest Edge	G1G2
<i>Symphotrichum jessicae</i>	Jessica's Aster	Forest Edge	G2
<i>Urocitellus brunneus</i>	Northern Idaho Ground Squirrel	Forest Edge	G2
<i>Astragalus asotinensis</i>	Asotin Milkvetch	Grasslands	G2
<i>Silene spaldingii</i>	Spalding's Catchfly	Grasslands	G2
<i>Cryptomastix magnidentata</i>	Mission Creek Oregonian	Mixed Conifer Forest	G1
<i>Carex aboriginum</i>	Indian Valley Sedge	Riparian or Streams	G1
<i>Cryptomastix sanburni</i>	Kingston Oregonian	Riparian or Streams	G1
<i>Ladislavella idahoensis</i>	Shortspire Pondsail	Riparian or Streams	G1
<i>Rubus bartonianus</i>	Bartonberry	Riparian or Streams	G2

*Species links provided when available



All management recommendations assume that operators and land managers are following all applicable BMPs, laws, and regulations.