

OREGON BLUE MOUNTAINS ECOREGION

G1 and G2 Species Habitat Management Guidelines



INTRODUCTION

The Sustainable Forestry Initiative® (SFI) [2022 Standards](#) include requirements that promote and conserve Forests with Exceptional Conservation Value (FECV), which includes critically imperiled (G1) and imperiled (G2) species. This fact sheet summarizes the analysis of FECV habitat within this ecoregion and provides habitat management recommendations that would benefit species potentially found here.

HABITAT TYPES

- River/Riparian
- Mixed Conifer Forest
- Rocky Outcropping
- Forest Edge

RIVER/RIPARIAN MANAGEMENT

- Protect known locations
- Maintain well vegetated riparian buffers
- Plant a diversity of both hardwood and conifer trees in the riparian zone
- Retain large diameter trees near streams and rivers
- Buffer wetlands, springs, and headwater areas

MIXED CONIFER FOREST MANAGEMENT

- Protect known locations
- Retain legacy trees, stumps, and logs
- Retain large diameter trees with cavities or broken tops
- Leave skips and gaps with dense shrub component
- Retain large slash into piles

SPECIAL SITES MANAGEMENT (ROCKY OUTCROPPING)

- Protect known locations
- Buffer special sites

FOREST EDGE MANAGEMENT

- Protect known locations
- Buffer special sites



Red-fruited lomatium



Spalding's campion



Greenman's lomatium

All management recommendations assume that operators and land managers are following all applicable BMPs, laws, and regulations.

OREGON BLUE MOUNTAINS ECOREGION

G1 and G2 Species Habitat Management Guidelines



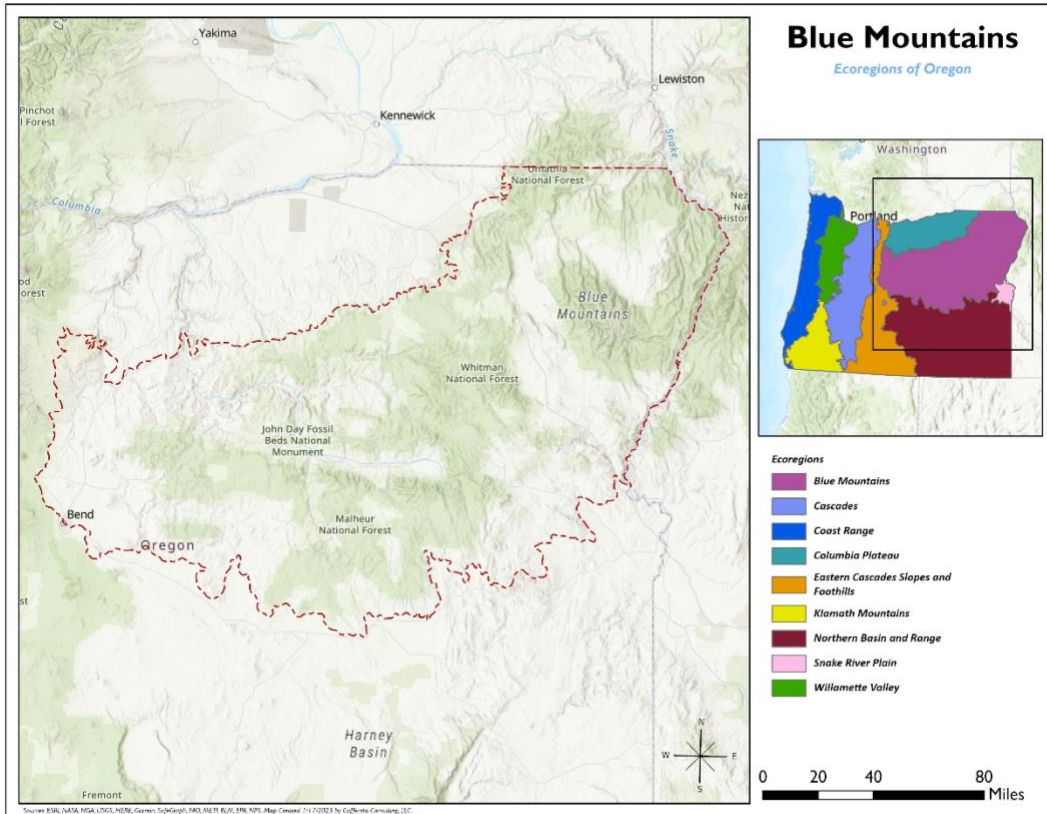
SCIENTIFIC NAME	COMMON NAME	HABITAT	Status
<i>Lomatium greenmanii</i>	Greenman's lomatium	Forest Edge	G1
<i>Lomatium erythrocarpum</i>	Red-fruited lomatium	Forest Edge	G1G2
<i>Silene spaldingii</i>	Spalding's campion	Forest Edge	G2
<i>Megomphix lutarius</i>	Umatilla megomphix (snail)	Mixed Conifer Forest	G1G2
<i>Allium tribracteatum</i>	Three-leaved onion	Mixed Conifer Forest	G2
<i>Astragalus tyghensis</i>	Tygh Valley milk-vetch	Mixed Conifer Forest	G2
<i>Eriogonum cusickii</i>	Cusick's eriogonum	Mixed Conifer Forest	G2
<i>Juga newberryi</i>	A freshwater snail	River/Riparian	G1
<i>Taylorconcha insperata</i>	A freshwater snail	River/Riparian	G1
<i>Juga sp. 2</i>	Blue Mountains juga (snail)	River/Riparian	G1
<i>Juga bulbosa</i>	Bulb juga (snail)	River/Riparian	G1
<i>Colligyryus depressus</i>	Harney Basin duskysnail	River/Riparian	G1
<i>Scaphinotus mannii</i>	Mann's mollusk-eating ground beetle	River/Riparian	G1G2
<i>Isoetes minima</i>	Midget quillwort	River/Riparian	G1G2
<i>Fluminicola fuscus</i>	Columbia pebblesnail	River/Riparian	G2
<i>Erythranthe hymenophylla</i>	Membrane-leaved monkeyflower	River/Riparian	G2
<i>Fisherola nuttalli</i>	Shortface lanx (=Giant Columbia River limpet)	River/Riparian	G2
<i>Cryptomastix hendersoni</i>	Columbia Gorge oregonian (snail)	River/Riparian	G2Q
<i>Ogaridiscus subrupicola</i>	Southern tightcoil (snail)	Rocky Outcropping	G1
<i>Lomatium pastorale</i>	Meadow lomatium	Rocky Outcropping	G1G2
<i>Oreohelix sp. 29</i>	Hells Canyon mountainsnail	Rocky Outcropping	G2
<i>Cryptomastix populi</i>	Poplar Oregonian (snail)	Rocky Outcropping	G2
<i>Castilleja lutea</i>	Yellow paintbrush	Rocky Outcropping	G2

*Species links provided when available

All management recommendations assume that operators and land managers are following all applicable BMPs, laws, and regulations.

OREGON BLUE MOUNTAINS ECOREGION

G1 and G2 Species Habitat Management Guidelines



All management recommendations assume that operators and land managers are following all applicable BMPs, laws, and regulations.