

# WASHINGTON

## BLUE MOUNTAINS ECOREGION

### G1 and G2 Species Habitat Management Guidelines



#### INTRODUCTION

The Sustainable Forestry Initiative® (SFI) [2022 Standards](#) include requirements that promote and conserve Forests with Exceptional Conservation Value (FECV), which includes critically imperiled (G1) and imperiled (G2) species. This fact sheet summarizes the analysis of FECV habitat within this ecoregion and provides habitat management recommendations that would benefit species potentially found here.

#### HABITAT TYPES

- Forest Edge
- Mixed Conifer Forest
- Wetland
- Special Sites (Bare Rock/Talus, Grassland)

#### FOREST EDGE MANAGEMENT

- Protect known locations
- Buffer or light touch buffer
- Provide floral resources such as Asters, Chrysothamnus, and Cirsium

#### MIXED CONIFER FOREST MANAGEMENT

- Protect known locations
- Retain legacy trees, stumps, and logs
- Retain large diameter trees with cavities or broken tops
- Leave skips and gaps with dense shrub component
- Retain large slash into piles

#### WETLAND MANAGEMENT

- Protect known locations
- Plant a diversity of both hardwood and conifer trees
- Retain large diameter trees near wetlands
- Buffer wetlands, springs, and headwater areas

#### SPECIAL SITES (BARE ROCK/TALUS, GRASSLANDS) MANAGEMENT

- Protect known locations
- Buffer or light touch buffer



**Suckley bumble bee**



**Rough Goldenweed**



**Spalding's Campion**

*All management recommendations assume that operators and land managers are following all applicable BMPs, laws, and regulations.*

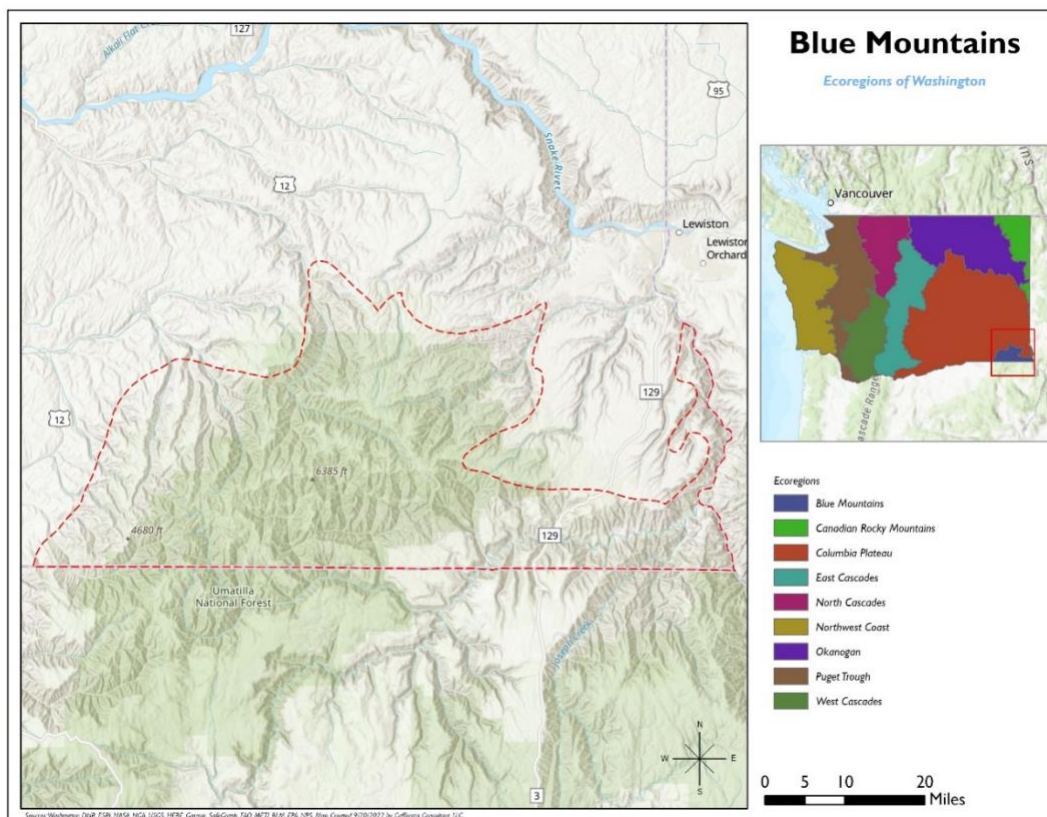
# WASHINGTON BLUE MOUNTAINS ECOREGION

## G1 and G2 Species Habitat Management Guidelines



SCIENTIFIC NAME	COMMON NAME	HABITAT	STATUS
<i>Phlox solivaga</i>	<a href="#">Yeti Phlox</a>	Bare Rock/Talus	G1
<i>Bombus suckleyi</i>	<a href="#">Suckley bumble bee</a>	Forest Edge	G1G3
<i>Pyrrocoma scaberula</i>	<a href="#">Rough Goldenweed</a>	Forest Edge	G2
<i>Silene spaldingii</i>	<a href="#">Spalding's Campion</a>	Forest Edge	G2
<i>Megomphix lutarius</i>	<a href="#">Umatilla megomphid</a>	Mixed Conifer Forest	G1
<i>Oreohelix sp. 18</i>	Limestone Point mountainsnail	Grassland	G1
<i>Allium diction</i>	<a href="#">Blue Mountain Onion</a>	Grassland	G2
<i>Rubus nigerrimus</i>	<a href="#">Northwestern Blackberry</a>	Wetland	G2

\*Species links provided when available



All management recommendations assume that operators and land managers are following all applicable BMPs, laws, and regulations.