

CALIFORNIA CASCADES ECOREGION

G1 and G2 Species Habitat Management Guidelines



INTRODUCTION

The Sustainable Forestry Initiative® (SFI) [2022 Standards](#) include requirements that promote and conserve Forests with Exceptional Conservation Value (FECV), which includes critically imperiled (G1) and imperiled (G2) species. This fact sheet summarizes the analysis of FECV habitat within this ecoregion and provides habitat management recommendations that would benefit species potentially found here.

HABITAT TYPES

- Mixed Conifer Forest
- Riparian/Streams/Wetlands/Temporary Pools
- Special Sites (Bare Rock/Talus, Barrens, Bog/Fen, Cliff, Forest Edge, Grassland, Savanna, Shrubland/Chapparal)

MIXED CONIFER FOREST MANAGEMENT

- Protect known locations
- Retain legacy trees, stumps, and logs
- Retain large diameter trees with cavities or broken tops
- Leave skips and gaps with dense shrub component
- Retain large slash into piles

RIPARIAN/STREAMS/WETLANDS/TEMPORARY POOLS MANAGEMENT

- Protect known locations
- Maintain well vegetated riparian buffers
- Plant a diversity of both hardwood and conifer trees
- Retain large diameter trees near streams, rivers and wetlands
- Buffer wetlands, springs, and headwater areas

SPECIAL SITES MANAGEMENT

- Protect known locations
- Maintain and buffer special sites
- Provide floral resources for sensitive bees



Suckley Cuckoo Bumble Bee



California Condor



**Sierra Nevada
Yellow-legged Frog**

All management recommendations assume that operators and land managers are following all applicable BMPs, laws, and regulations.

CALIFORNIA CASCADES ECOREGION

G1 and G2 Species Habitat Management Guidelines



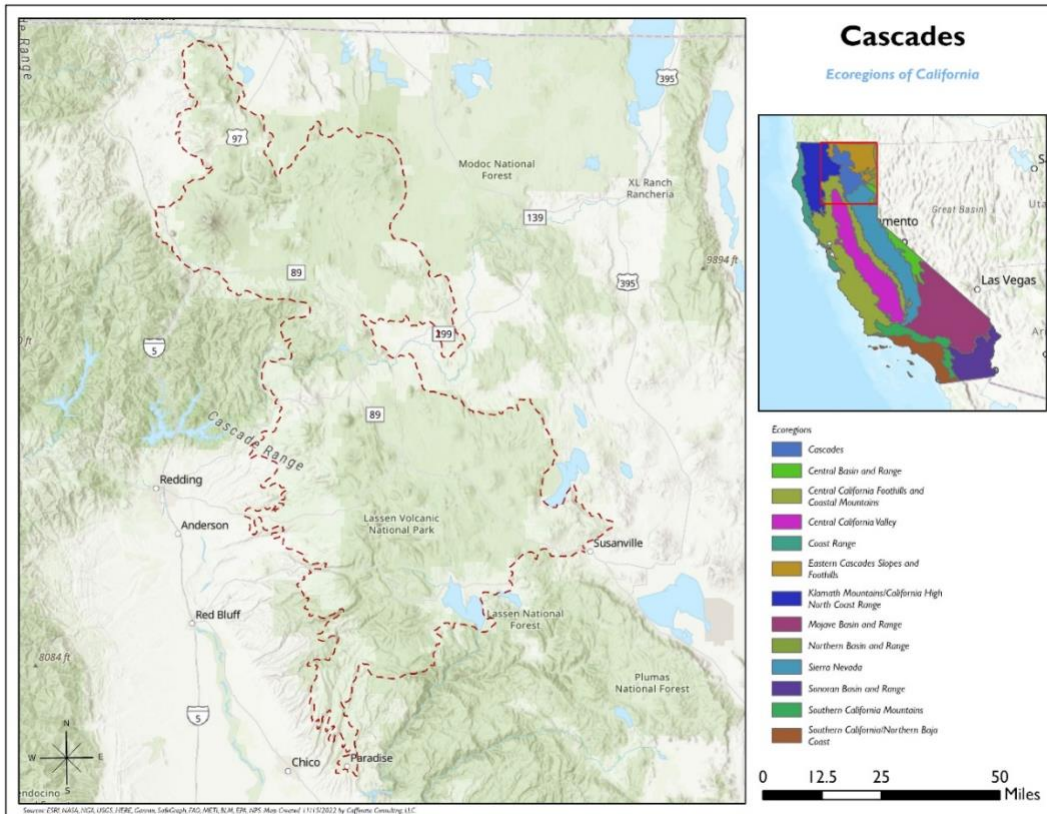
SCIENTIFIC NAME	COMMON NAME	HABITAT	STATUS
<i>Haplodontium tehamense</i>	Lassen Peak Copper Moss	Bare Rock/Talus	G2
<i>Boechera constancei</i>	Constance's Rockcress	Barrens	G2
<i>Oreostemma elatum</i>	Plumas Mountaincrown	Bog/Fen	G2
<i>Bombus suckleyi</i>	Suckley's Cuckoo Bumble Bee	Forest Edge	G2
<i>Bombus franklini</i>	Franklin Bumble Bee	Grassland	G1
<i>Phacelia cookie</i>	Cooke's Phacelia	Mixed Conifer Forest	G1
<i>Gymnogyps californianus</i>	California Condor	Mixed Conifer Forest	G1
<i>Carex xerophila</i>	Chaparral Sedge	Mixed Conifer Forest	G2
<i>Rupertia hallii</i>	Hall's Rupertia	Mixed Conifer Forest	G2
<i>Allium jepsonii</i>	Jepson's Onion	Mixed Conifer Forest	G2
<i>Draba carnosula</i>	Mt. Eddy Draba	Mixed Conifer Forest	G2
<i>Monardella follettii</i>	Serpentine Mountainbalm	Mixed Conifer Forest	G2
<i>Campanula wilkinsiana</i>	Wilkins' Harebell	Mixed Conifer Forest	G2
Calochortus syntrophus		Mixed Conifer Forest	G2
<i>Pyrgulopsis archimedis</i>	Archimedes Pyrg	Riparian/Streams	G1
<i>Helisoma newberryi</i>	Great Basin Ramshorn	Riparian/Streams	G1
<i>Tuctoria greenei</i>	Green's Awnless Orcutt Grass	Riparian/Streams	G1
<i>Pisidium ultramontanum</i>	Montane Peaclam	Riparian/Streams	G1
<i>Hesperoleucus mitrulus</i>	Northern Roach	Riparian/Streams	G1
<i>Pacifastacus fortis</i>	Shasta Crayfish	Riparian/Streams	G1
<i>Rhyacophila spinata</i>	Spiny Rhyacophilan Caddisfly	Riparian/Streams	G1
<i>Desmona bethula</i>	Amphibious Caddisfly	Riparian/Streams	G2
<i>Colligyrus convexus</i>	Canary Dusksnail	Riparian/Streams	G2
<i>Ecclisomyia bilera</i>	King's Creek Ecclisomyian Caddisfly	Riparian/Streams	G2
<i>Lanx patelloides</i>	Kneecap Lanx	Riparian/Streams	G2
<i>Fluminicola seminalis</i>	Nugget Pebblesnail	Riparian/Streams	G2
<i>Monadenia infumata</i>	Redwood Sideband	Riparian/Streams	G2
<i>Cottus asperimus</i>	Rough Sculpin	Riparian/Streams	G2
<i>Rana sierrae</i>	Sierra Nevada Yellow-legged Frog	Riparian/Streams	G2
<i>Pyrgulopsis eremica</i>	Smoke Creek Pyrg	Riparian/Streams	G2
<i>Juga acutifilosa</i>	Topaz Juga	Riparian/Streams	G2
<i>Sidalcea robusta</i>	Butte County Checker-mallow	Savanna	G2
<i>Packera layneae</i>	Layne's Butterweed	Shrubland/Chaparral	G2
<i>Trifolium piorkowskii</i>	Piorkowski's Clover	Temporary Pools	G2
<i>Juncus leiospermus</i>	Red Bluff Rush	Temporary Pools	G2
<i>Orcuttia tenuis</i>	Slender Orcutt Grass	Temporary Pools	G2
<i>Juncus digitatus</i>	Finger Rush	Wetland	G1
<i>Gratiola heterosepala</i>	Boggs Lake Hedge-hyssop	Wetland	G2
<i>Epilobium oreganum</i>	Oregon Willowherb	Wetland	G2
<i>Cryptantha crinite</i>	Silky Cryptantha	Wetland	G2

*Species links provided when available

All management recommendations assume that operators and land managers are following all applicable BMPs, laws, and regulations.

CALIFORNIA CASCADES ECOREGION

G1 and G2 Species Habitat Management Guidelines



All management recommendations assume that operators and land managers are following all applicable BMPs, laws, and regulations.