

CALIFORNIA

CENTRAL BASIN & RANGE Ecoregion

G1 and G2 Species Habitat Management Guidelines



INTRODUCTION

The Sustainable Forestry Initiative® (SFI) [2022 Standards](#) include requirements that promote and conserve Forests with Exceptional Conservation Value (FECV), which includes critically imperiled (G1) and imperiled (G2) species. This fact sheet summarizes the analysis of FECV habitat within this ecoregion and provides habitat management recommendations that would benefit species potentially found here.

HABITAT TYPES

- Mixed Conifer Forest
- Riparian/Streams/Wetland
- Special Sites (Bare Rock/Talus, Cliff, Desert, Grassland, Shrubland/Chaparral)

MIXED CONIFER FOREST MANAGEMENT

- Protect known locations
- Retain legacy trees, stumps, and logs
- Retain large diameter trees with cavities or broken tops
- Leave skips and gaps with dense shrub component
- Retain large slash into piles

RIPARIAN/STREAMS/WETLANDS MANAGEMENT

- Protect known locations
- Maintain well vegetated riparian buffers
- Plant a diversity of both hardwood and conifer trees
- Retain large diameter trees near streams, rivers and wetlands
- Buffer wetlands, springs, and headwater areas

SPECIAL SITES MANAGEMENT

- Protect known locations
- Maintain and buffer special sites



Bright Yellow Violet



California Condor



**Sierra Nevada
Yellow-legged Frog**

All management recommendations assume that operators and land managers are following all applicable BMPs, laws, and regulations.

CALIFORNIA

CENTRAL BASIN & RANGE ECOREGION

G1 and G2 Species Habitat Management Guidelines

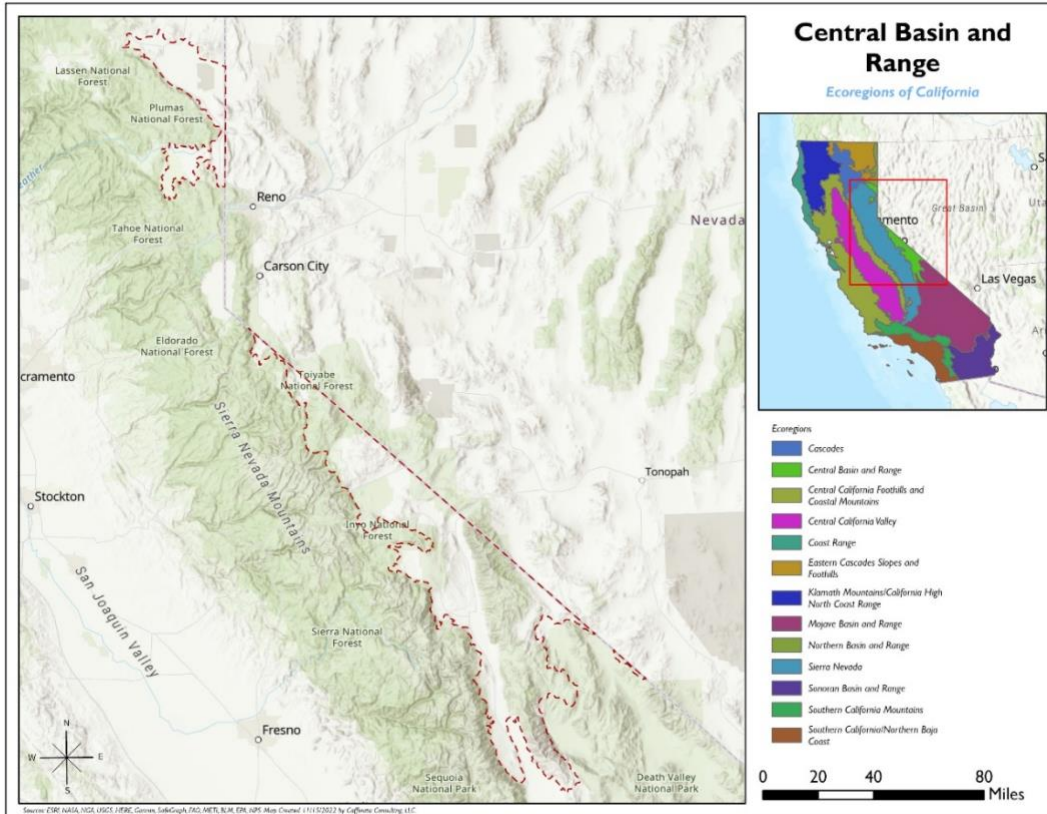


SCIENTIFIC NAME	COMMON NAME	HABITAT	STATUS
<i>Polemonium chartaceum</i>	Mason's Sky Pilot	Bare Rock/Talus	G2
<i>Hackelia sharsmithii</i>	Sharsmith's Stickseed	Bare Rock/Talus	G2
<i>Hesperia miriamae</i>	Sierra Skipper	Bare Rock/Talus	G2
<i>Hesperidanthus jaegeri</i>	Jaeger's Caulostramina	Cliff	G2
<i>Lupinus holmgrenianus</i>	Holmgren's Lupine	Desert	G2
Nemacladus inyoensis		Desert	G2
<i>Bombus crotchii</i>	Crotch's Bumble Bee	Grassland/herbaceous	G2
<i>Draba monoensis</i>	White Mountains Draba	Grassland/Herbaceous	G2
<i>Gymnogyps californianus</i>	California Condor	Mixed Conifer Forest	G1
<i>Boechera pinzliae</i>	Pinzl's Rockcress	Mixed Conifer Forest	G1
<i>Cryptantha roosiorum</i>	Bristlecone Cryptantha	Mixed Conifer Forest	G2
<i>Trifolium dedeckerae</i>	Dedecker's Clover	Mixed Conifer Forest	G2
<i>Ericameria gilmanii</i>	Gilman Goldenweed	Mixed Conifer Forest	G2
<i>Perityle inyoensis</i>	Inyo Rockdaisy	Mixed Conifer Forest	G2
<i>Astragalus monoensis</i>	Mono Milkvetch	Mixed Conifer Forest	G2
<i>Ivesia aperta</i>	Sierra Valley Ivesia	Mixed Conifer Forest	G2
<i>Pyrgulopsis aardahli</i>	Benton Valley Springsnail	Riparian/Streams	G1
<i>Pyrgulopsis perturbata</i>	Fish Slough Springsnail	Riparian/Streams	G1
<i>Pyrgulopsis owensensis</i>	Owens Valley Springsnail	Riparian/Streams	G1
<i>Desmona bethula</i>	Amphibious Caddisfly	Riparian/Streams	G2
<i>Ivesia sericoleuca</i>	Plumas Ivesia	Riparian/Streams	G2
<i>Rana sierrae</i>	Sierra Nevada Yellow-legged Frog	Riparian/Streams	G2
<i>Pyrgulopsis wongi</i>	Wong's Springsnail	Riparian/Streams	G2
<i>Eriogonum eremicola</i>	Wildrose Canyon Buckwheat	Shrubland/Chaparral	G1
<i>Cusickiella quadricostata</i>	Bodie Hills Cusickiella	Shrubland/Chaparral	G2
<i>Viola aurea</i>	Bright Yellow Violet	Shrubland/Chaparral	G2
<i>Lupinus duranii</i>	Mono Lake Lupine	Shrubland/Chaparral	G2
<i>Ivesia webberi</i>	Webber Ivesia	Shrubland/Chaparral	G2
<i>Cyprinodon radiusus</i>	Owens Pupfish	Wetland	G1
<i>Plagiobothrys parishii</i>	Parish's Popcorn-flower	Wetland	G1

*species links provided when available

All management recommendations assume that operators and land managers are following all applicable BMPs, laws, and regulations.

CALIFORNIA CENTRAL BASIN & RANGE Ecoregion G1 and G2 Species Habitat Management Guidelines



All management recommendations assume that operators and land managers are following all applicable BMPs, laws, and regulations.