

OREGON COLUMBIA PLATEAU ECOREGION

G1 and G2 Species Habitat Management Guidelines



INTRODUCTION

The Sustainable Forestry Initiative® (SFI) [2022 Standards](#) include requirements that promote and conserve Forests with Exceptional Conservation Value (FECV), which includes critically imperiled (G1) and imperiled (G2) species. This fact sheet summarizes the analysis of FECV habitat within this ecoregion and provides habitat management recommendations that would benefit species potentially found here.

HABITAT TYPES

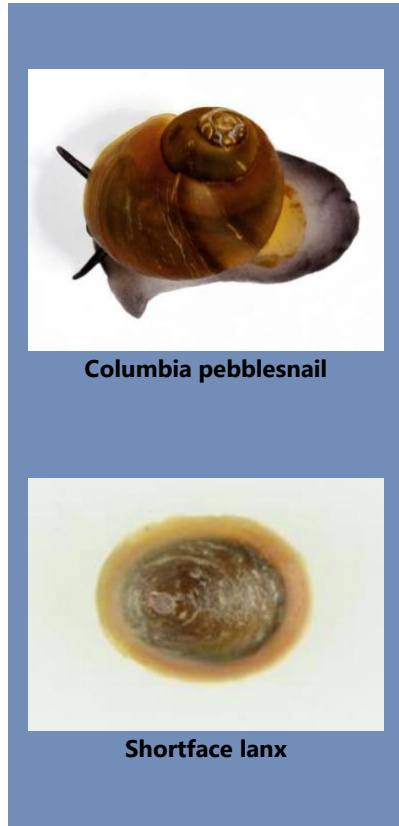
- Mixed Conifer Forest
- River/Riparian

MIXED CONIFER FOREST MANAGEMENT

- Protect known locations
- Retain legacy trees, stumps, and logs
- Retain large diameter trees with cavities or broken tops
- Leave skips and gaps with dense shrub component
- Retain large slash into piles

RIVER/RIPARIAN MANAGEMENT

- Protect known locations
- Maintain well vegetated riparian buffers
- Plant a diversity of both hardwood and conifer trees in the riparian zone
- Retain large diameter trees near streams and rivers
- Buffer wetlands, springs, and headwater areas

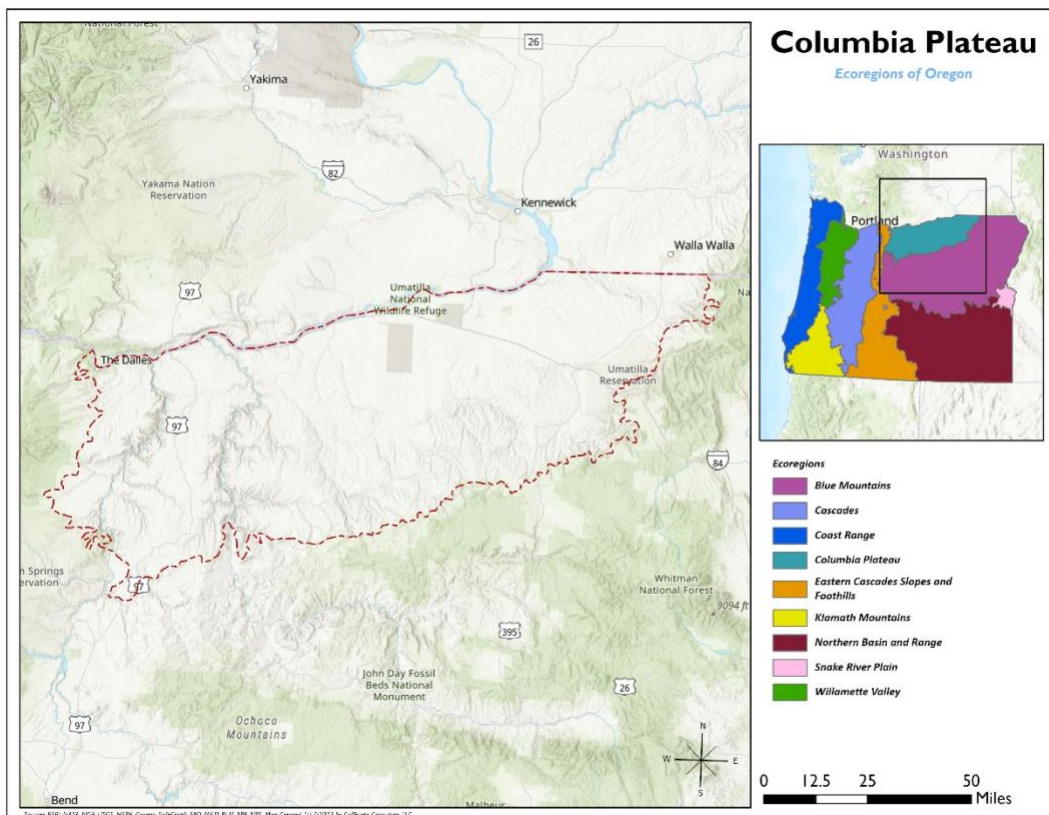


OREGON COLUMBIA PLATEAU ECOREGION

G1 and G2 Species Habitat Management Guidelines

SCIENTIFIC NAME	COMMON NAME	HABITAT	Status
<i>Vespericola depressus</i>	Columbia Gorge hesperian (snail)	Mixed Conifer Forest	G2Q
<i>Juga newberryi</i>	A freshwater snail	River/Riparian	G1
<i>Juga hemphilli</i>	Barren juga	River/Riparian	G1
<i>Juga bulbosa</i>	Bulb juga (snail)	River/Riparian	G1
<i>Vespericola sp. 1</i>	Oak Springs hesperian (snail)	River/Riparian	G1
<i>Fluminicola sp. 17</i>	Tuscan pebblesnail	River/Riparian	G1
<i>Juga sp. 7</i>	Three-band juga (snail)	River/Riparian	G1Q
<i>Fluminicola fuscus</i>	Columbia pebblesnail	River/Riparian	G2
<i>Fisherola nuttalli</i>	Shortface lanx (=Giant Columbia River limpet)	River/Riparian	G2
<i>Juga sp. 1</i>	Basalt juga (snail)	River/Riparian	G2Q
<i>Cryptomastix hendersoni</i>	Columbia Gorge oregonian (snail)	River/Riparian	G2Q

*Species links provided when available



All management recommendations assume that operators and land managers are following all applicable BMPs, laws, and regulations.