

WASHINGTON

COLUMBIA PLATEAU ECOREGION

G1 and G2 Species Habitat Management Guidelines



INTRODUCTION

The Sustainable Forestry Initiative® (SFI) [2022 Standards](#) include requirements that promote and conserve Forests with Exceptional Conservation Value (FECV), which includes critically imperiled (G1) and imperiled (G2) species. This fact sheet summarizes the analysis of FECV habitat within this ecoregion and provides habitat management recommendations that would benefit species potentially found here.

HABITAT TYPES

- Forest Edge
- Mixed Conifer Forest
- Riparian or Streams and Wetlands
- Special Sites (Bare Rock/Talus, Pools, Grasslands)

FOREST EDGE MANAGEMENT

- Protect known locations
- Buffer special sites
- Provide floral resources such as Asters, Chrysothamnus, and Cirsium

MIXED CONIFER FOREST MANAGEMENT

- Protect known locations
- Retain legacy trees, stumps, and logs
- Retain large diameter trees with cavities or broken tops
- Leave skips and gaps with dense shrub component
- Retain large slash into piles

RIPARIAN, STREAMS & WETLANDS MANAGEMENT

- Protect known locations
- Maintain well vegetated buffers
- Plant a diversity of both hardwood and conifer trees
- Retain large diameter trees near streams and rivers
- Buffer wetlands, springs, and headwater areas

SPECIAL SITES MANAGEMENT

- Protect known locations
- Buffer special sites



Suckley bumble bee



Wenatchee Larkspur



Columbia Oregonian

All management recommendations assume that operators and land managers are following all applicable BMPs, laws, and regulations.

WASHINGTON

COLUMBIA PLATEAU ECOREGION

G1 and G2 Species Habitat Management Guidelines



SCIENTIFIC NAME	COMMON NAME	HABITAT	STATUS
<i>Phlox solivaga</i>	Yeti Phlox	Bare rock/talus	G1
<i>Helicodiscus salmonaceus</i>	Salmon coil	Bare rock/Talus	G2
<i>Bombus suckleyi</i>	Suckley bumble bee	Forest Edge	G1G3
<i>Symphotrichum jessicae</i>	Jessica's Aster	Forest Edge	G2
<i>Pyrrocoma scaberula</i>	Rough Goldenweed	Forest Edge	G2
<i>Silene spaldingii</i>	Spalding's Campion	Forest Edge	G2
<i>Driloleirus americanus</i>	Giant Palouse Earthworm	Grassland	G1
<i>Oreohelix sp. 18</i>	Limestone Point mountainsnail	Grassland	G1
<i>Astragalus arrectus</i>	Palouse Milkvetch	Grassland	G2
<i>Pyrrocoma liatrifomis</i>	Smallhead Goldenweed	Grassland	G2
<i>Oreohelix junii</i>	Grand Coulee mountainsnail	Mixed Conifer Forest	G2
<i>Trifolium thompsonii</i>	Thompson's Clover	Mixed Conifer Forest	G2
<i>Vespericola depressa</i>	Dalles hesperian	Mixed Conifer Forest	G2
<i>Branchinecta cornigera</i>	Horned Fairy Shrimp	Pools	G2
<i>Branchinecta campestris</i>	Pocked Pouch Fairy Shrimp	Pools	G2
<i>Allium constrictum</i>	Constricted Douglas' Onion	Pools	G2G3
<i>Juga sp. 3</i>	Brown juga	Riparian or Streams	G1
<i>Branchinecta lutulenta</i>	Muddy Fairy Shrimp	Riparian or Streams	G1
<i>Juga sp. 7</i>	Three-band juga	Riparian or Streams	G1
<i>Cryptomastix hendersoni</i>	Columbia Oregonian	Riparian or Streams	G1G2
<i>Vorticifex neritoides</i>	Nerite rams-horn	Riparian or Streams	G1
<i>Fluminicola fuscus</i>	Ashy pebblesnail	Riparian or Streams	G2
<i>Juga sp. 1</i>	Basalt juga	Riparian or Streams	G2
<i>Fisherola nuttalli</i>	Shortface lanx	Riparian or Streams	G2
<i>Delphinium viridescens</i>	Wenatchee Larkspur	Riparian or Streams	G2
<i>Spiranthes diluvialis</i>	Ute Ladies'-tresses	Riparian or Streams	G2G3
<i>Rubus nigerrimus</i>	Northwestern Blackberry	Wetland	G2

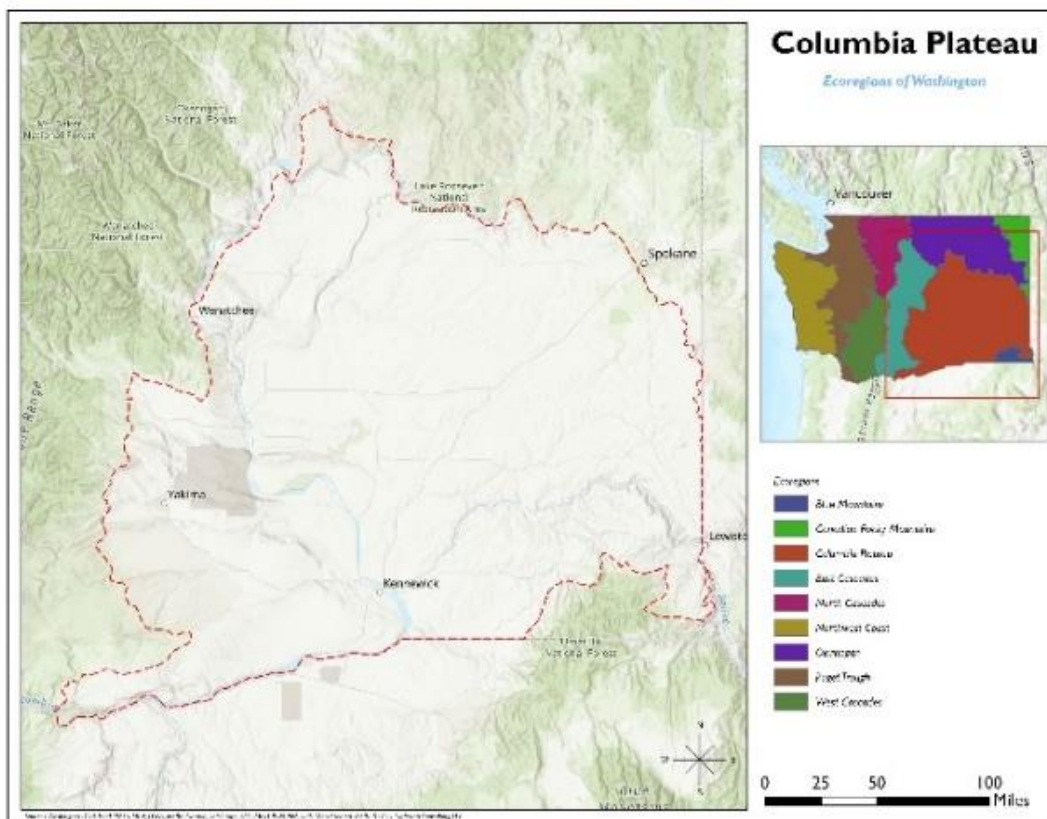
*species links provided when available

All management recommendations assume that operators and land managers are following all applicable BMPs, laws, and regulations.

WASHINGTON

COLUMBIA PLATEAU ECOREGION

G1 and G2 Species Habitat Management Guidelines



All management recommendations assume that operators and land managers are following all applicable BMPs, laws, and regulations.