

# THE LOG

## SFI IMPLEMENTATION COMMITTEE NEWSLETTER

Sharing SIC accomplishments across the SFI network and footprint  
Please forward to SFI Implementation Committee members

Has your SIC done something cool you'd like to share?  
Send to [Gordy](#) for inclusion in a future newsletter!

### New Learnings

Rickie White with NatureServe and Chad Leatherwood with Weyerhaeuser joined SFI's Healy Hamilton to discuss supports for certified organizations in meeting biodiversity requirements for the SFI Forest Management and Fiber Sourcing Standards. [The webinar](#) shared progress, gathered feedback, and identified useful resources. Watch all webinars at [forests.org/networksic](https://forests.org/networksic).



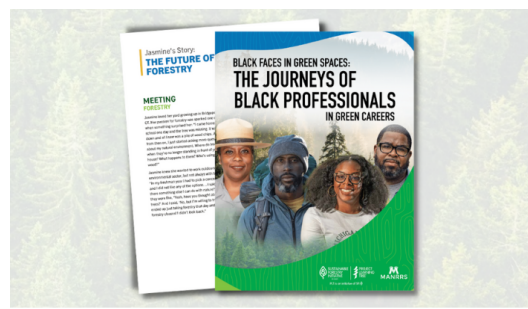
SFI has released a [new video](#) for SICs to use in logger training. It features voices from across the U.S. and Canada, including SIC coordinators and loggers, to create awareness of SFI's work and the impact of professional development on sustainable forestry.

### New People

[Meet Pete Johnson, the new Program Coordinator for the Maine SIC](#). Pete brings decades of experience and a lifelong commitment to sustainable forestry. He will collaborate with SIC member companies and partners to strengthen training efforts and promote the SFI standards across the state. [Connect with Pete](#) to learn more about how the Maine SIC drives on-the-ground progress.



### Celebrating SIC Contributions



We would like to extend a big thank you to the [Virginia SIC](#) for donating Project Learning Tree (PLT) Journeys of Black Professionals in Green Careers guides to participants in the Flatwoods Job Corps Civilian Conservation Center. The guide helps middle and high school students—and young professionals—explore green career pathways through real-world stories and hands-on activities. [Learn more and download your copy of the guide](#).

We're also grateful to the [Wisconsin](#), [Georgia](#), and [Oregon](#) SICs for their generous donations to support PLT in their states and their sponsorship of the [PLT Annual Conference in Clemson, South Carolina!](#) Interested in working more closely with PLT? [Connect with the PLT Coordinator in your state](#).



*"We fully understand what we do and why we do it, but communicating that in a way that educators can convey that message, well, we're not so good at that...Project Learning Tree is that conduit the forest sector has been needing and desiring for a long time, and we want to foster its growth."*  
—David James, Georgia SIC Program Coordinator, about the [2025 PLT Annual Conference](#)

### Upcoming Events


#### [SFI 2025 Annual Conference in Minneapolis, Minnesota](#)

Join us for the 2025 SFI Annual Conference in Minneapolis, Minnesota, from May 20-23 as we explore the theme Innovating for Forests & Communities! This year, we're also celebrating SFI's 30th anniversary and three decades of shared achievements in sustainable forestry.

Are you [registered](#)? We're looking forward to seeing you online and in-person next week!

#### [SIC General Session](#)


Tuesday, May 20 | 1:00–4:30 PM CT

 In-person registration to the SFI Annual Conference required

- Training on community outreach
- Forests 2 Tap: SIC partnership in Minnesota
- Insights and discussion for improving logger training
- Regional breakout sessions and SIC networking

#### [SFI Conservation Impact Workshop](#)

Friday, May 23 | 9:00 AM–12:00 PM CT

 Free and open to all (in-person or virtual registration required)

- Growing innovative climate solutions
- Expert panel on climate-responsive forest management practices
- Introduction of a new initiative: Climate Informed Principles and Practices
- Certification for climate resilience and opportunities to shape approaches

[Register for the workshop](#).

#### [Supporting Foresters Nationwide](#)

SFI is proud to sponsor the [Association of Consulting Foresters \(ACF\) Chapter of the Year Awards](#). If you're attending the 2025 ACF National Conference in Lancaster, PA (June 22–25), be sure to [connect with PA SIC Program Manager Chuck Coup](#).

### Links We Love

#### [Climate Smart Forestry at McMaster University](#)

We had a great time at McMaster University last month, where we hosted a research-to-practice technical dialogue exploring greenhouse gas accounting. [Watch the video on LinkedIn](#).



#### [Clemson University First to Certify](#)

Clemson University is officially the first organization to achieve certification to the full SFI Urban and Community Forest Sustainability Standard!

Learn more about the landmark achievement in [the press release](#).

