

# CENTRAL ROCKIES HIGH PLAINS ECOREGION

## G1 and G2 Species Habitat Management Guidelines



### INTRODUCTION

The Sustainable Forestry Initiative® (SFI) [2022 Standards](#) include requirements that promote and conserve Forests with Exceptional Conservation Value (FECV), which includes critically imperiled (G1) and imperiled (G2) species. This fact sheet summarizes the analysis of FECV habitat within this ecoregion and provides habitat management recommendations that would benefit species potentially found here.

### HABITAT TYPES

- Mixed Conifer Forest
- Riparian
- Special Sites

### MIXED CONIFER FOREST MANAGEMENT

- Protect known locations
- Retain legacy trees, stumps, and logs
- Retain large diameter trees with cavities or broken tops
- Leave skips and gaps with dense shrub component
- Retain large slash into piles

### RIPARIAN MANAGEMENT

- Protect known locations
- Maintain well vegetated riparian buffers
- Plant a diversity of both hardwood and conifer trees
- Retain large diameter trees near streams and rivers
- Buffer streams, wetlands, springs, and headwater areas

### SPECIAL SITES MANAGEMENT

- Protect known locations
- Buffer special sites



**Laramie Columbine**



**Potassium Loving Fairy Shrimp**



**Northern Long-eared Bat**

*All management recommendations assume that operators and land managers are following all applicable BMPs, laws, and regulations.*

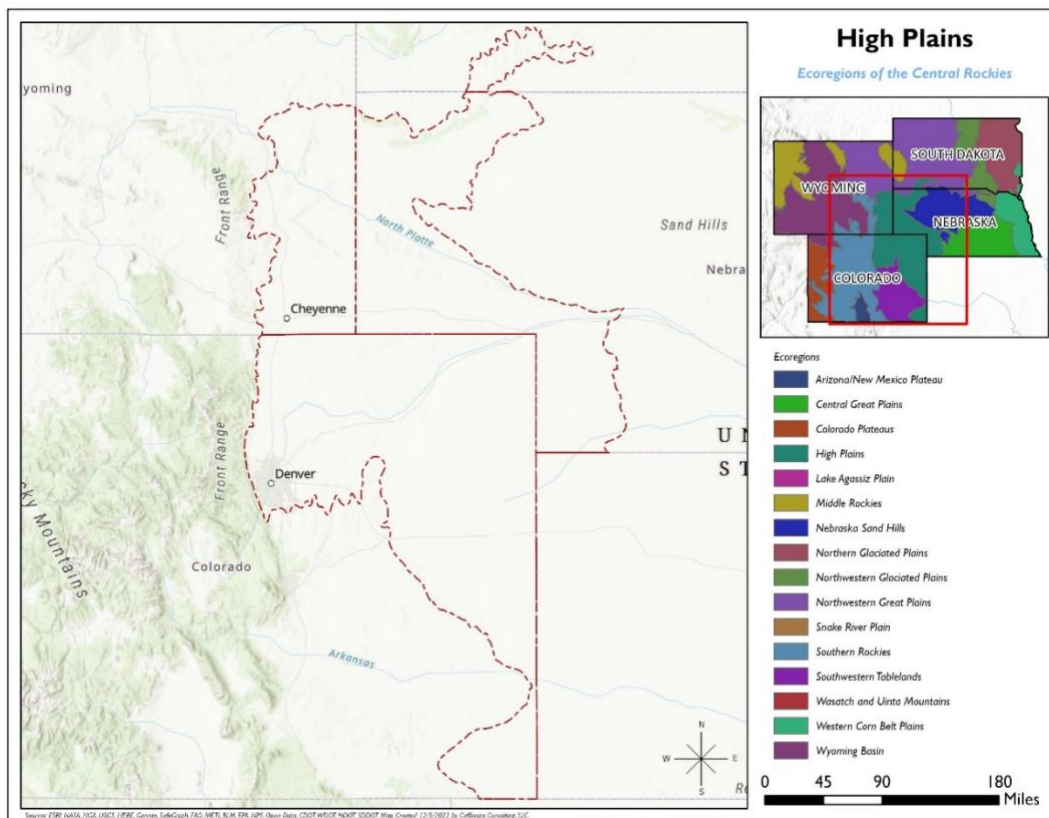
# CENTRAL ROCKIES HIGH PLAINS ECOREGION

## G1 and G2 Species Habitat Management Guidelines



SCIENTIFIC NAME	COMMON NAME	HABITAT	STATUS
<i>Aquilegia laramiensis</i>	<a href="#">Laramie Columbine</a>	Mixed Conifer Forest	G2G3
<i>Myotis septentrionalis</i>	<a href="#">Northern Long-eared Bat</a>	Mixed Conifer Forest	G2G3
<i>Branchinecta potassa</i>	<a href="#">Potassium Loving Fairy Shrimp</a>	Riparian	G2
<i>Spiranthes diluvialis</i>	<a href="#">Ute Ladies'-tresses</a>	Riparian	G2G3
<i>Catocala whitneyi</i>	<a href="#">Whitney's Underwing</a>	Special Site	G2G3

\*Species links provided when available



All management recommendations assume that operators and land managers are following all applicable BMPs, laws, and regulations.