

OREGON KLAMATH MOUNTAINS ECOREGION

G1 and G2 Species Habitat Management Guidelines



INTRODUCTION

The Sustainable Forestry Initiative® (SFI) [2022 Standards](#) include requirements that promote and conserve Forests with Exceptional Conservation Value (FECV), which includes critically imperiled (G1) and imperiled (G2) species. This fact sheet summarizes the analysis of FECV habitat within this ecoregion and provides habitat management recommendations that would benefit species potentially found here.

HABITAT TYPES

- River/Riparian
- Mixed conifer forest
- Special sites
- Forest edge

RIVER/RIPARIAN MANAGEMENT

- Protect known locations
- Maintain well vegetated riparian buffers
- Plant a diversity of both hardwood and conifer trees in the riparian zone
- Retain large diameter trees near streams and rivers
- Buffer wetlands, springs, and headwater areas

MIXED CONIFER FOREST MANAGEMENT

- Protect known locations
- Retain legacy trees, stumps, and logs
- Retain large diameter trees with cavities or broken tops
- Leave skips and gaps with dense shrub component
- Retain large slash into piles

SPECIAL SITES MANAGEMENT

- Protect known locations
- Buffer special sites

FOREST EDGE MANAGEMENT

- Protect known locations
- Buffer special sites



Green sturgeon



Kincaid's lupine



California condor

All management recommendations assume that operators and land managers are following all applicable BMPs, laws, and regulations.

OREGON KLAMATH MOUNTAINS ECOREGION

G1 and G2 Species Habitat Management Guidelines



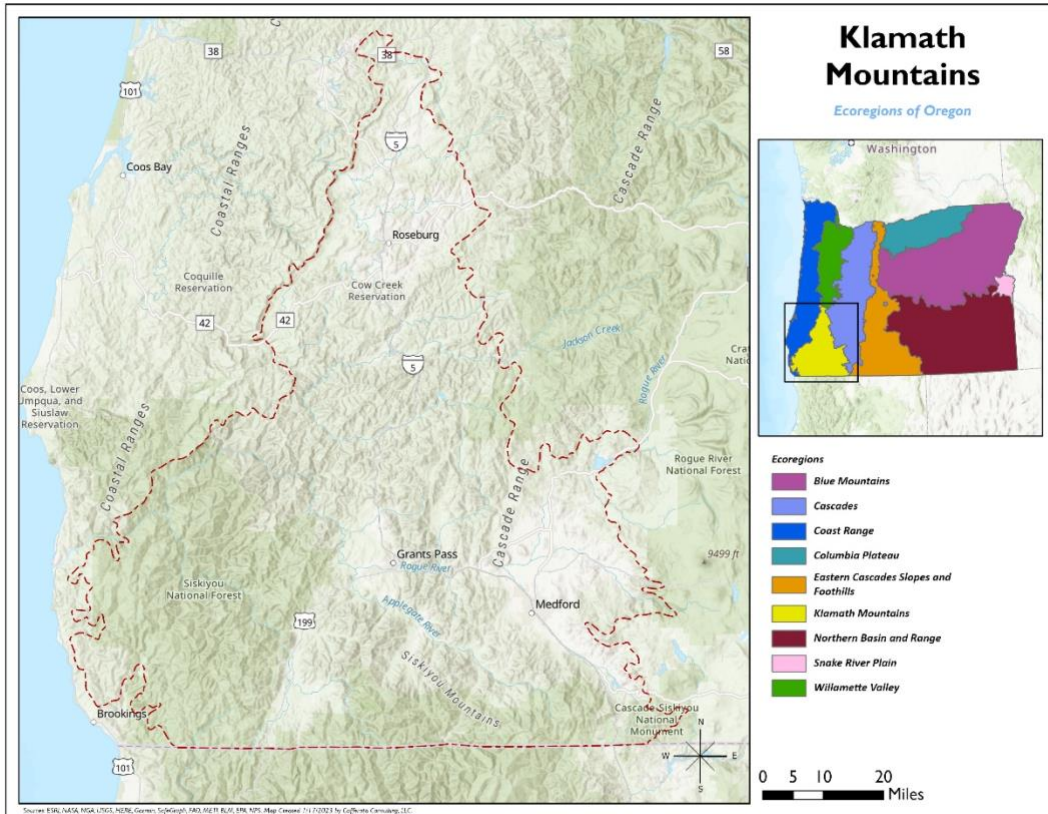
SCIENTIFIC NAME	COMMON NAME	HABITAT	Status
<i>Fluminicola fresti</i>	Frest's pebblesnail	River/Riparian	G1
<i>Isocapnia mogila</i>	Irregular stonefly	River/Riparian	G1
<i>Pomatiopsis chacei</i>	Marsh walker	River/Riparian	G1
<i>Rhyacophila colonus</i>	Obrien rhyacophilan caddisfly	River/Riparian	G1
<i>Hesperoleucus mitrulus</i>	Pit roach	River/riparian	G1
<i>Pomatiopsis binneyi</i>	Robust walker	River/Riparian	G1
<i>Chasmistes brevirostris</i>	Shortnose sucker	River/riparian	G1
<i>Juga sp. 2</i>	Blue Mountains juga (snail)	River/Riparian	G2
<i>Juga sp. 3</i>	Brown juga	River/Riparian	G2
<i>Acipenser medirostris</i>	Green sturgeon	River/riparian	G2
<i>Carex klamathensis</i>	Klamath sedge	River/riparian	G2
<i>Rivulariella gemmipara</i>	Liverwort	River/riparian	G2
<i>Epilobium oregonum</i>	Oregon willow-herb	River/riparian	G2
<i>Fluminicola multifarius</i>	Shasta pebblesnail	River/Riparian	G2
<i>Sophora leachiana</i>	Western necklace	River/riparian	G2
<i>Gymnogyps californianus</i>	California condor*	Mixed conifer forest	G1
<i>Calochortus coxii</i>	Cox's mariposa-lily	Mixed conifer forest	G1
<i>Horkelia hendersonii</i>	Henderson's horkelia	Mixed conifer forest	G1
<i>Gentiana plurisetosa</i>	Bristly gentian	Mixed conifer forest	G2
<i>Ribes erythrocarpum</i>	Crater Lake currant	Mixed conifer forest	G2
<i>Fritillaria gentneri</i>	Gentner's fritillaria	Mixed conifer forest	G2
<i>Camassia howellii</i>	Howell's camassia	Mixed conifer forest	G2
<i>Galium muricatum</i>	Humboldt bedstraw	Mixed conifer forest	G2
<i>Prosartes parvifolia</i>	Siskiyou fairy bells	Mixed conifer forest	G2
<i>Calochortus persistens</i>	Siskiyou mariposa lily	Mixed conifer forest	G2
<i>Lomatium cookii</i>	Agate Desert lomatium	Forest edge	G1
<i>Sisyrinchium hitchcockii</i>	Hitchcock's blue-eyed grass	Forest edge	G1
<i>Dumontia oregonensis</i>	A water flea	Forest Edge	G2
<i>Lupinus oreganus</i>	Kincaid's lupine	Forest edge	G2
<i>vPolites mardon</i>	Mardon skipper	Grassland/Forest Edge	G2
<i>Perideridia erythrorhiza</i>	Red-root yampah	Forest edge	G2
<i>Meconella oregana</i>	White meconella	Forest edge	G2
<i>Boechera rollei</i>	Klamath River rockcress	Special site	G1
<i>Sedum moranii</i>	Rogue River stonecrop	Special site	G2
<i>Grylloblatta siskiyouensis</i>	An ice crawler	Alpine forest	G1
<i>Bombus franklini</i>	Franklin's bumblebee	Alpine forest	G1
<i>Vertigo dalliana</i>	Horseshoe vertigo	Rocky outcropping	G1

*Species links provided when available

All management recommendations assume that operators and land managers are following all applicable BMPs, laws, and regulations.

OREGON KLAMATH MOUNTAINS ECOREGION

G1 and G2 Species Habitat Management Guidelines



All management recommendations assume that operators and land managers are following all applicable BMPs, laws, and regulations.