

# CENTRAL ROCKIES MIDDLE ROCKIES ECOREGION

## G1 and G2 Species Habitat Management Guidelines



### INTRODUCTION

The Sustainable Forestry Initiative® (SFI) [2022 Standards](#) include requirements that promote and conserve Forests with Exceptional Conservation Value (FECV), which includes critically imperiled (G1) and imperiled (G2) species. This fact sheet summarizes the analysis of FECV habitat within this ecoregion and provides habitat management recommendations that would benefit species potentially found here.

### HABITAT TYPES

- Mixed Conifer Forest
- Riparian
- Special Site

### MIXED CONIFER FOREST MANAGEMENT

- Protect known locations
- Retain legacy trees, stumps, and logs
- Retain large diameter trees with cavities or broken tops
- Leave skips and gaps with dense shrub component
- Retain large slash into piles
- Provide floral resources for the Arogos skipper (prefers purple cone flowers such as thistle, Polygala, Lacnanthes, or Liatris)

### RIPARIAN MANAGEMENT

- Protect known locations
- Maintain well vegetated riparian buffers
- Plant a diversity of both hardwood and conifer trees
- Retain large diameter trees near streams and rivers
- Buffer streams, wetlands, springs, and headwater areas

### SPECIAL SITE MANAGEMENT

- Protect known locations
- Buffer special sites
- Provide cover (woody debris, rocks, leaf litter, etc.) at sites where Pygmy Mountainsnail has been documented



**Northern Long-eared Bat**



**Whooping Crane**



**Pygmy Mountainsnail**

*All management recommendations assume that operators and land managers are following all applicable BMPs, laws, and regulations.*

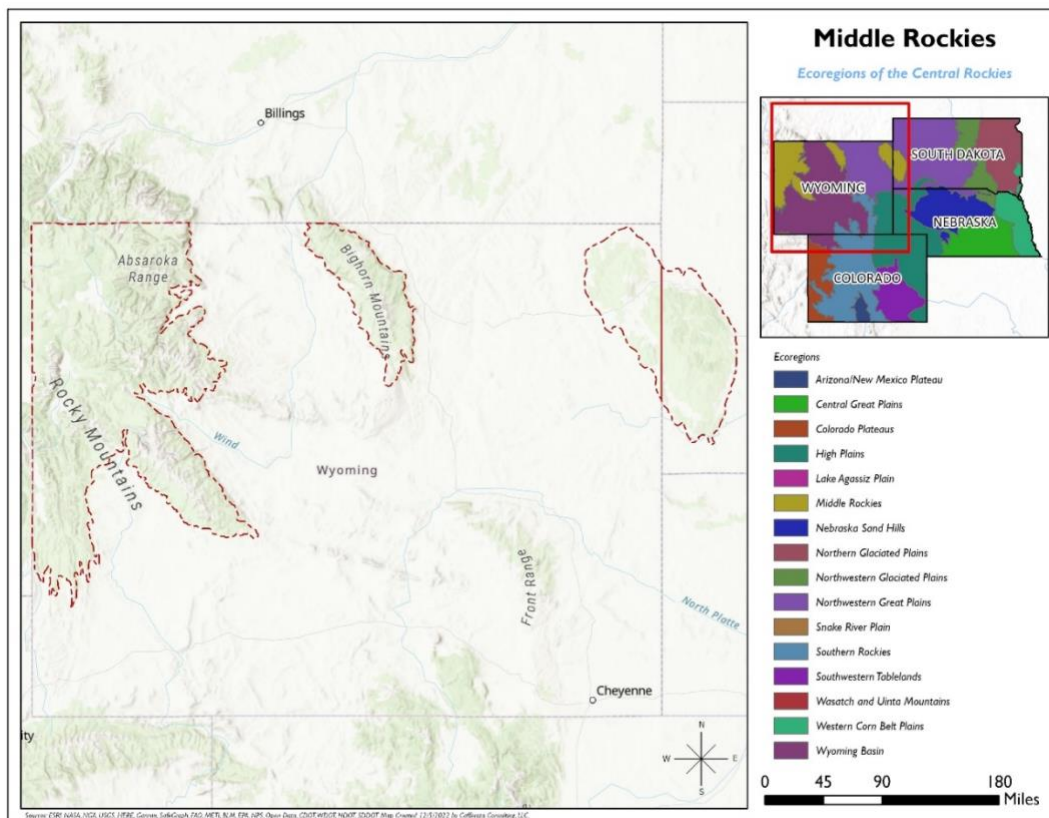
# CENTRAL ROCKIES MIDDLE ROCKIES ECOREGION

## G1 and G2 Species Habitat Management Guidelines



SCIENTIFIC NAME	COMMON NAME	HABITAT	STATUS
<i>Atrytone arogos</i>	<a href="#">Arogos Skipper</a>	Mixed Conifer Forest	G2G3
<i>Myotis septentrionalis</i>	<a href="#">Northern Long-eared Bat</a>	Mixed Conifer Forest	G2G3
<i>Grus americana</i>	<a href="#">Whooping Crane</a>	Riparian	G1
<i>Catinella wandae</i>	<a href="#">Slope Ambersnail</a>	Riparian	G2
<i>Oreohelix pygmaea</i>	<a href="#">Pygmy Mountainsnail</a>	Special Site	G2

\*Species links provided when available



All management recommendations assume that operators and land managers are following all applicable BMPs, laws, and regulations.