

IDAHO MIDDLE ROCKIES ECOREGION

G1 and G2 Species Habitat Management Guidelines



INTRODUCTION

The Sustainable Forestry Initiative® (SFI) [2022 Standards](#) include requirements that promote and conserve Forests with Exceptional Conservation Value (FECV), which includes critically imperiled (G1) and imperiled (G2) species. This fact sheet summarizes the analysis of FECV habitat within this ecoregion and provides habitat management recommendations that would benefit species potentially found here.

HABITAT TYPES

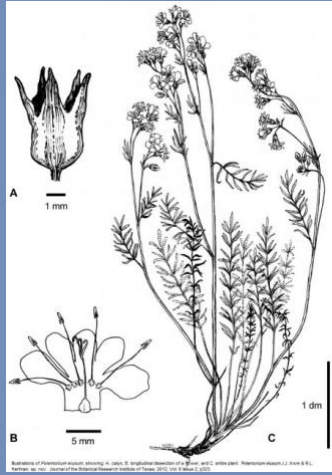
- Mixed Conifer Forest
- Riparian or Stream

MIXED CONIFER FOREST MANAGEMENT


- Protect known locations
- Retain legacy trees, stumps, and logs
- Retain large diameter trees with cavities or broken tops
- Leave skips and gaps with dense shrub component
- Retain large slash into piles

RIPARIAN OR STREAM MANAGEMENT


- Protect known locations
- Maintain well vegetated riparian buffers
- Plant a diversity of both hardwood and conifer trees in the riparian zone
- Retain large diameter trees near streams and rivers
- Buffer wetlands, springs, and headwater areas



Elusive Jacob's-ladder



Whooping Crane



Alkali Primrose

The complex block contains three images. At the top is a detailed botanical illustration of the Elusive Jacob's-ladder plant, showing its stems, leaves, and flowers. It includes three sub-figures: A (a magnified view of a flower part with a 1 mm scale bar), B (a magnified view of another flower part with a 5 mm scale bar), and C (the whole plant with a 1 dm scale bar). Below this is a photograph of a white Whooping Crane with a long neck and a long, straight bill. At the bottom is a photograph of a single white Alkali Primrose flower with a green stem and leaves.

All management recommendations assume that operators and land managers are following all applicable BMPs, laws, and regulations.

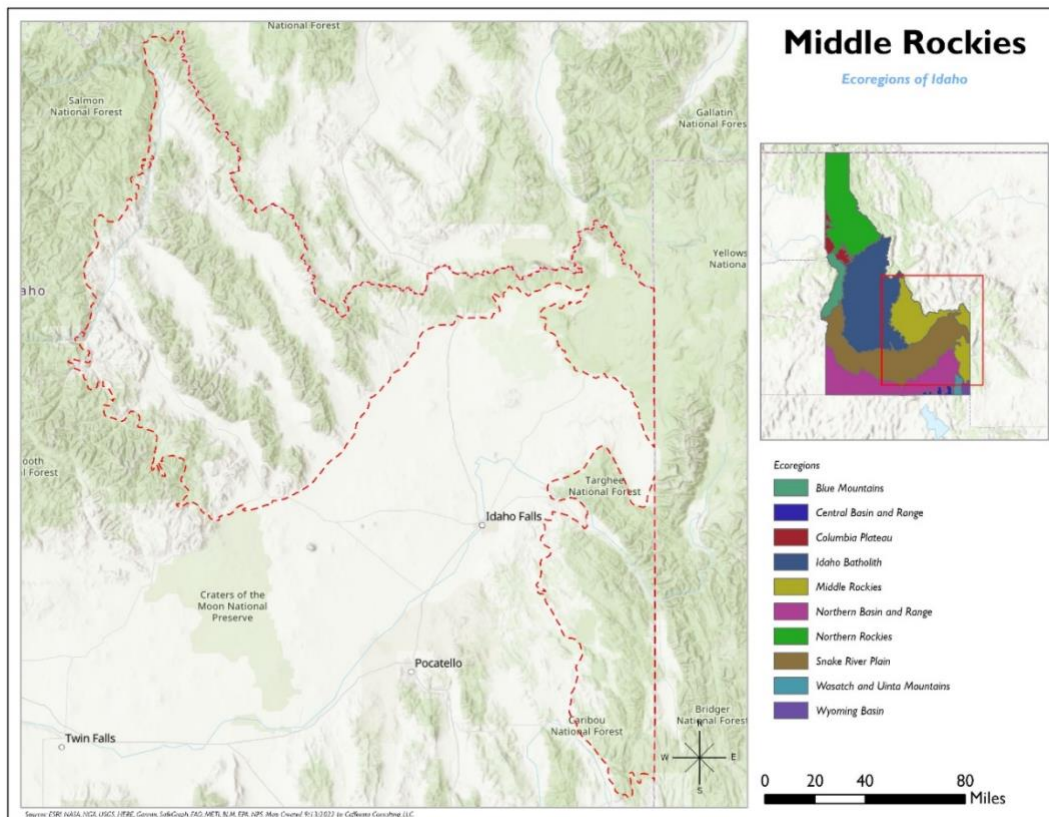
IDAHO MIDDLE ROCKIES ECOREGION

G1 and G2 Species Habitat Management Guidelines



SCIENTIFIC NAME	COMMON NAME	HABITAT	STATUS
<i>Polemonium elusum</i>	Elusive Jacob's-ladder	Mixed Conifer Forest	G1
<i>Ladislavella idahoensis</i>	Shortspire Pondsail	Riparian or Streams	G1
<i>Grus americana</i>	Whooping Crane	Riparian or Streams	G1
<i>Primula alcalina</i>	Alkali Prlimrose	Riparian or Streams	G2
<i>Astragalus diversifolius</i>	Meadow Milkvetch	Riparian or Streams	G2
<i>Spiranthes diluvialis</i>	Ute Ladies' Tresses	Riparian or Streams	G2G3

*Species links provided when available



All management recommendations assume that operators and land managers are following all applicable BMPs, laws, and regulations.