

CALIFORNIA

MOJAVE BASIN AND RANGE Ecoregion

G1 and G2 Species Habitat Management Guidelines



INTRODUCTION

The Sustainable Forestry Initiative® (SFI) [2022 Standards](#) include requirements that promote and conserve Forests with Exceptional Conservation Value (FECV), which includes critically imperiled (G1) and imperiled (G2) species. This fact sheet summarizes the analysis of FECV habitat within this ecoregion and provides habitat management recommendations that would benefit species potentially found here.

HABITAT TYPES

- Grassland
- Mixed Conifer Forest
- Riparian/Streams/Wetlands/Springs/Temporary Pools
- Shrubland/Chaparral
- Special Sites (Bare Rock/Talus, Cliff, Desert, Dunes,)

GRASSLAND MANAGEMENT

- Protect known locations
- Buffer grassland areas

MIXED CONIFER FOREST MANAGEMENT

- Protect known locations
- Retain legacy trees, stumps, and logs
- Retain large diameter trees with cavities or broken tops
- Leave skips and gaps with dense shrub component
- Retain large slash into piles

RIPARIAN/STREAMS/WETLANDS/SPRINGS/ TEMPORARY POOLS MANAGEMENT

- Protect known locations
- Maintain well vegetated riparian buffers
- Plant a diversity of both hardwood and conifer trees
- Retain large diameter trees near streams, rivers and wetlands
- Buffer wetlands, springs, and headwater areas



Sierra Night Lizard



Gilman's Milkvetch



Owens Pupfish

All management recommendations assume that operators and land managers are following all applicable BMPs, laws, and regulations.

CALIFORNIA

MOJAVE BASIN AND RANGE Ecoregion

G1 and G2 Species Habitat Management Guidelines



SHRUBLAND/CHAPARRAL MANAGEMENT

- Protect known locations
- Buffer shrubland and chaparral areas

SPECIAL SITES MANAGEMENT

- Protect known locations
- Maintain and buffer special sites

SCIENTIFIC NAME	COMMON NAME	HABITAT	STATUS
<i>Claytonia panamintensis</i>	Panamint Spring Beauty	Bare Rock/Talus	G1
<i>Mentzelia polita</i>	Polished Blazingstar	Bare Rock/Talus	G2
<i>Hackelia sharsmithii</i>	Sharsmith's Stickseed	Bare Rock/Talus	G2
<i>Lupinus holmgrenianus</i>	Holmgren's Lupine	Desert	G2
<i>Euparagia unidentata</i>	a wasp	Dunes	G1
<i>Xantusia sierrae</i>	Sierra Night Lizard	Grassland	G1
<i>Bombus crotchii</i>	Crotch's Bumble Bee	Grassland	G2
<i>Symphyotrichum defoliatum</i>	San Bernardino Aster	Grassland	G2
<i>Gymnogyps californianus</i>	California Condor	Mixed Conifer Forest	G1
<i>Boechera yorkii</i>	Last Chance Rockcress	Mixed Conifer Forest	G1
<i>Phacelia anelsonii</i>	Aven Nelson's Phacelia	Mixed Conifer Forest	G2
<i>Trifolium dedeckeriae</i>	Dedecker's Clover	Mixed Conifer Forest	G2
<i>Ericameria gilmanii</i>	Gilman Goldenweed	Mixed Conifer Forest	G2
<i>Astragalus gilmanii</i>	Gilman's Milkvetch	Mixed Conifer Forest	G2
<i>Perityle villosa</i>	Hanaupah Rockdaisy	Mixed Conifer Forest	G2
<i>Perityle inyoensis</i>	Inyo Rockdaisy	Mixed Conifer Forest	G2
<i>Ivesia patellifera</i>	Kingston Mountains Ivesia	Mixed Conifer Forest	G2
<i>Astragalus lentiformis</i>	Lens-pod Milkvetch	Mixed Conifer Forest	G2
<i>Penstemon calcareus</i>	Limestone Beardtongue	Mixed Conifer Forest	G2
<i>Petrophytum acuminatum</i>	Marble Rockmat	Mixed Conifer Forest	G2
<i>Mimulus mohavensis</i>	Mojave Monkeyflower	Mixed Conifer Forest	G2
<i>Layia heterotricha</i>	Pale-yellow Layia	Mixed Conifer Forest	G2
<i>Erigeron parishii</i>	Parish's Daisy	Mixed Conifer Forest	G2
<i>Thysanocarpus rigidus</i>		Mixed Conifer Forest	G2
<i>Assimineia infima</i>	Badwater Snail	Riparian/Streams	G1
<i>Tryonia margae</i>	Grapevine Springs Elongate Tryonia	Riparian/Streams	G1
<i>Xyrauchen texanus</i>	Razorback Sucker	Riparian/Streams	G1
<i>Erythranthe rhodopetra</i>	Red Rock Canyon Monkeyflower	Riparian/Streams	G1

All management recommendations assume that operators and land managers are following all applicable BMPs, laws, and regulations.

CALIFORNIA

MOJAVE BASIN AND RANGE Ecoregion

G1 and G2 Species Habitat Management Guidelines

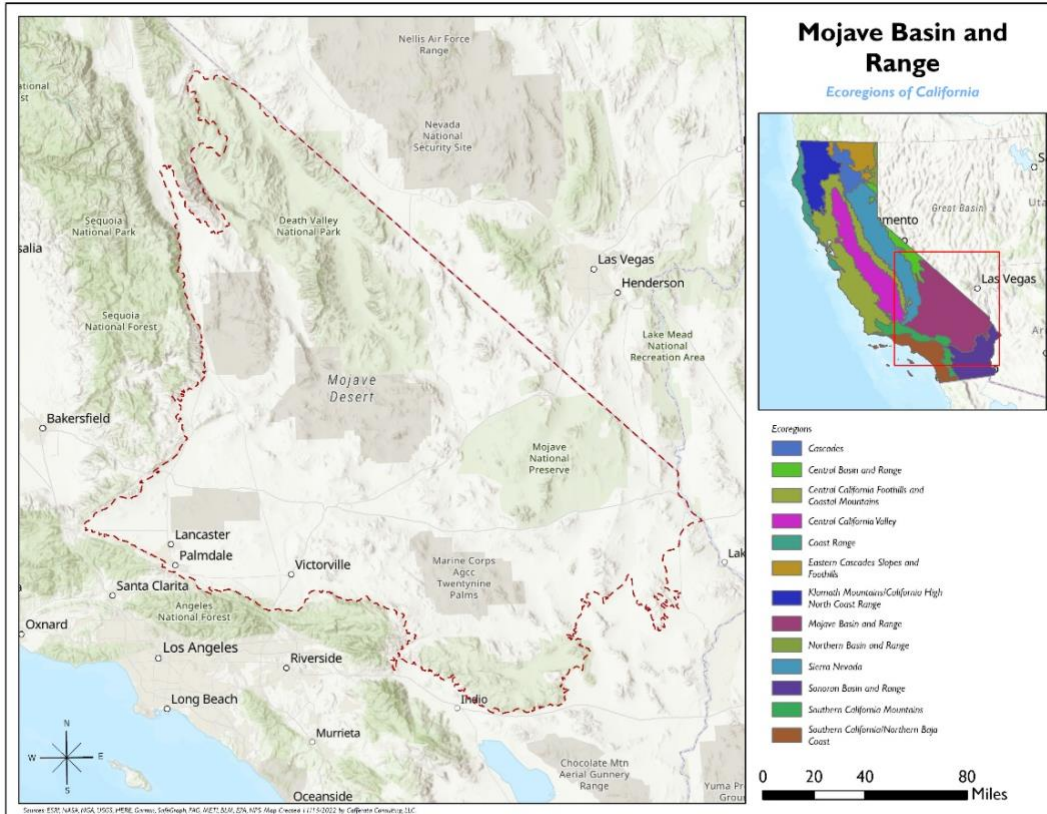


SCIENTIFIC NAME	COMMON NAME	HABITAT	STATUS
<i>Ipnobius robustus</i>	Robust Tryonia	Riparian/Streams	G1
<i>Cyprinodon salinus</i>	Salt Creek Pupfish	Riparian/Streams	G1
<i>Plebulina emigdionis</i>	San Emigdio Blue	Riparian/Streams	G1
<i>Rana muscosa</i>	Southern Mountain Yellow-legged Frog	Riparian/Streams	G1
<i>Eriastrum rosamondense</i>		Riparian/Streams	G1
<i>Pelocoris biimpressus</i>	Amargosa Naucorid Bug	Riparian/Streams	G2
<i>Cyprinodon nevadensis</i>	Amargosa Pupfish	Riparian/Streams	G2
<i>Anaxyrus californicus</i>	Arroyo Toad	Riparian/Streams	G2
<i>Rana draytonii</i>	California Red-legged Frog	Riparian/Streams	G2
<i>Sisyrinchium funereum</i>	Funeral Mountain Blue-eyed-grass	Riparian/Streams	G2
<i>Rana sierrae</i>	Sierra Nevada Yellow-legged Frog	Riparian/Streams	G2
<i>Drymocallis cuneifolia</i>	Wedgeleaf Drymocallis	Riparian/Streams	G2
<i>Pyrgulopsis wongi</i>	Wong's Springsnail	Riparian/Streams	G2
<i>Astragalus albens</i>	Cushenbury Milkvetch	Shrubland/Chaparral	G1
<i>Psychomastax deserticola</i>	Desert Monkey Grasshopper	Shrubland/Chaparral	G1
<i>Atriplex parishii</i>	Parish's Saltbush	Shrubland/Chaparral	G1
<i>Linanthus bernardinus</i>	Pioneertown Linanthus	Shrubland/Chaparral	G1
<i>Eriogonum eremicola</i>	Wildrose Canyon Buckwheat	Shrubland/Chaparral	G1
<i>Phacelia geraniifolia</i>	Geranium-leaf Scorpionweed	Shrubland/Chaparral	G2
<i>Prunus eremophila</i>	Mojave Desert Plum	Shrubland/Chaparral	G2
<i>Hyalella sandra</i>	Death Valley Amphipod	Springs	G1
<i>Delphinium recurvatum</i>	Byron Larkspur	Temporary Pools	G2
<i>Navarretia fossalis</i>	Spreading Navarretia	Temporary Pools	G2
<i>Cyprinodon radiosus</i>	Owens Pupfish	Wetland	G1
<i>Plagiobothrys parishii</i>	Parish's Popcorn-flower	Wetland	G1
<i>Grindelia fraxinipratensis</i>	Ash Meadows Gumweed	Wetland	G2

*Species links provided when available

All management recommendations assume that operators and land managers are following all applicable BMPs, laws, and regulations.

CALIFORNIA MOJAVE BASIN AND RANGE Ecoregion G1 and G2 Species Habitat Management Guidelines



All management recommendations assume that operators and land managers are following all applicable BMPs, laws, and regulations.