

# CALIFORNIA

## NORTHERN BASIN & RANGE Ecoregion

### G1 and G2 Species Habitat Management Guidelines



## INTRODUCTION

The Sustainable Forestry Initiative® (SFI) [2022 Standards](#) include requirements that promote and conserve Forests with Exceptional Conservation Value (FECV), which includes critically imperiled (G1) and imperiled (G2) species. This fact sheet summarizes the analysis of FECV habitat within this ecoregion and provides habitat management recommendations that would benefit species potentially found here.

## HABITAT TYPES

- Bare Rock/Talus
- Cliff
- Riparian/Streams
- Shrubland/Chaparral

## BARE ROCK/TALUS MANAGEMENT

- Protect known locations
- Buffer bare rock and talus areas

## RIPARIAN/STREAMS MANAGEMENT

- Protect known locations
- Maintain well vegetated riparian buffers
- Plant a diversity of both hardwood and conifer trees
- Retain large diameter trees near streams, rivers and wetlands
- Buffer wetlands, springs, and headwater areas

## SHRUBLAND/CHAPARRAL MANAGEMENT

- Protect known locations
- Buffer shrubland and chaparral areas



**Oregon Spotted Frog**



**California Condor**



**Weber Ivesia**

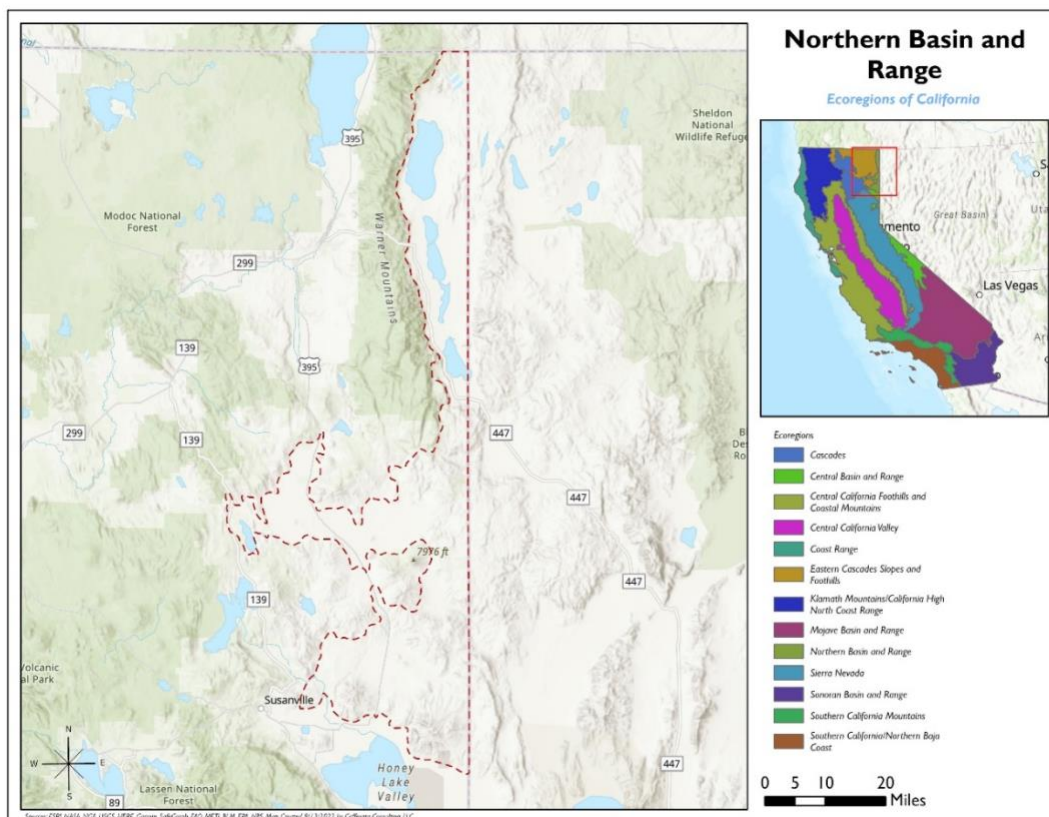
*All management recommendations assume that operators and land managers are following all applicable BMPs, laws, and regulations.*

# CALIFORNIA NORTHERN BASIN & RANGE Ecoregion G1 and G2 Species Habitat Management Guidelines



SCIENTIFIC NAME	COMMON NAME	HABITAT	STATUS
<i>Tortula californica</i>	<a href="#">California Screw Moss</a>	Bare Rock/Talus	G2
<i>Gymnogyps californianus</i>	<a href="#">California Condor</a>	Mixed Conifer Forest	G1
<i>Rana pretiosa</i>	<a href="#">Oregon Spotted Frog</a>	Riparian/Streams	G2
<i>Pyrgulopsis eremica</i>	<a href="#">Smoke Creek Pyrg</a>	Riparian/Streams	G2
<i>Juga acutifilosa</i>	<a href="#">Topaz Juga</a>	Riparian/Streams	G2
<i>Ivesia webberi</i>	<a href="#">Webber Ivesia</a>	Shrubland/Chaparral	G2

\*Species links provided when available



All management recommendations assume that operators and land managers are following all applicable BMPs, laws, and regulations.