

OREGON

NORTHERN BASIN & RANGE ECOREGION

G1 and G2 Species Habitat Management Guidelines



INTRODUCTION

The Sustainable Forestry Initiative® (SFI) [2022 Standards](#) include requirements that promote and conserve Forests with Exceptional Conservation Value (FECV), which includes critically imperiled (G1) and imperiled (G2) species. This fact sheet summarizes the analysis of FECV habitat within this ecoregion and provides habitat management recommendations that would benefit species potentially found here.

HABITAT TYPES

- Bare ground
- Juniper Woodlands
- Mixed Conifer Forest
- River/Riparian
- Rocky Outcropping

BARE GROUND MANAGEMENT

- Protect known locations
- Maintain areas of bare ground
- Retain or plant forage species for pollinators

JUNIPER WOODLANDS MANAGEMENT

- Protect known locations

MIXED CONIFER FOREST MANAGEMENT

- Protect known locations
- Retain legacy trees, stumps, and logs
- Retain large diameter trees with cavities or broken tops
- Leave skips and gaps with dense shrub component
- Retain large slash into piles

RIVER/RIPARIAN MANAGEMENT

- Protect known locations
- Maintain well vegetated riparian buffers
- Plant a diversity of both hardwood and conifer trees in the riparian zone
- Retain large diameter trees near streams and rivers
- Buffer wetlands, springs, and headwater areas



A miner bee



Grimy ivesea



Shortface lanx

All management recommendations assume that operators and land managers are following all applicable BMPs, laws, and regulations.

OREGON

NORTHERN BASIN & RANGE Ecoregion

G1 and G2 Species Habitat Management Guidelines



ROCKY OUTCROPPING MANAGEMENT

- Protect known locations
- Buffer rocky outcroppings

SCIENTIFIC NAME	COMMON NAME	HABITAT	Status
<i>Andrena winnemuccana</i>	A miner bee	Bare ground	G1
<i>Pronotocrepis clavicornis</i>	Thick-antennaed plant bug	Bare ground	G2
<i>Lomatium bentonitum</i>	Bentonite biscuitroot	Juniper Woodlands	G1G2
<i>Eriogonum cusickii</i>	Cusick's eriogonum	Mixed Conifer Forest	G2
<i>Allium tribracteatum</i>	Three-leaved onion	Mixed Conifer Forest	G2
<i>Taylorconcha insperata</i>	A freshwater snail	River/Riparian	G1
<i>Siphateles boraxobius</i>	Borax Lake chub	River/Riparian	G1
<i>Planorbella oregonensis</i>	Borax Lake ramshorn (snail)	River/Riparian	G1
<i>Helisoma newberryi</i>	Great Basin ramshorn	River/Riparian	G1
<i>Colligyrus depressus</i>	Harney Basin dusksnail	River/Riparian	G1
<i>Petrophysa sp. 1</i>	Hot spring physa (snail)	River/Riparian	G1
<i>Fluminicola sp. 9</i>	Malheur pebblesnail	River/Riparian	G1
<i>Pyrgulopsis fresti</i>	Owyhee hot springsnail	River/Riparian	G1
<i>Pyrgulopsis owyheensis</i>	A springsnail	River/Riparian	G1G2
<i>Pyrgulopsis intermedia</i>	Crooked Creek springsnail	River/Riparian	G1G2
<i>Dumontia oregonensis</i>	A water flea	River/Riparian	G1G3
<i>Siphateles alvordensis</i>	Alvord chub	River/Riparian	G2
<i>Acupalpus punctulatus</i>	Marsh ground beetle	River/Riparian	G2
<i>Fisherola nuttalli</i>	Shortface lanx (=Giant Columbia River limpet)	River/Riparian	G2
<i>Ivesia rhypara</i>	Grimy ivesia	Rocky Outcropping	G2

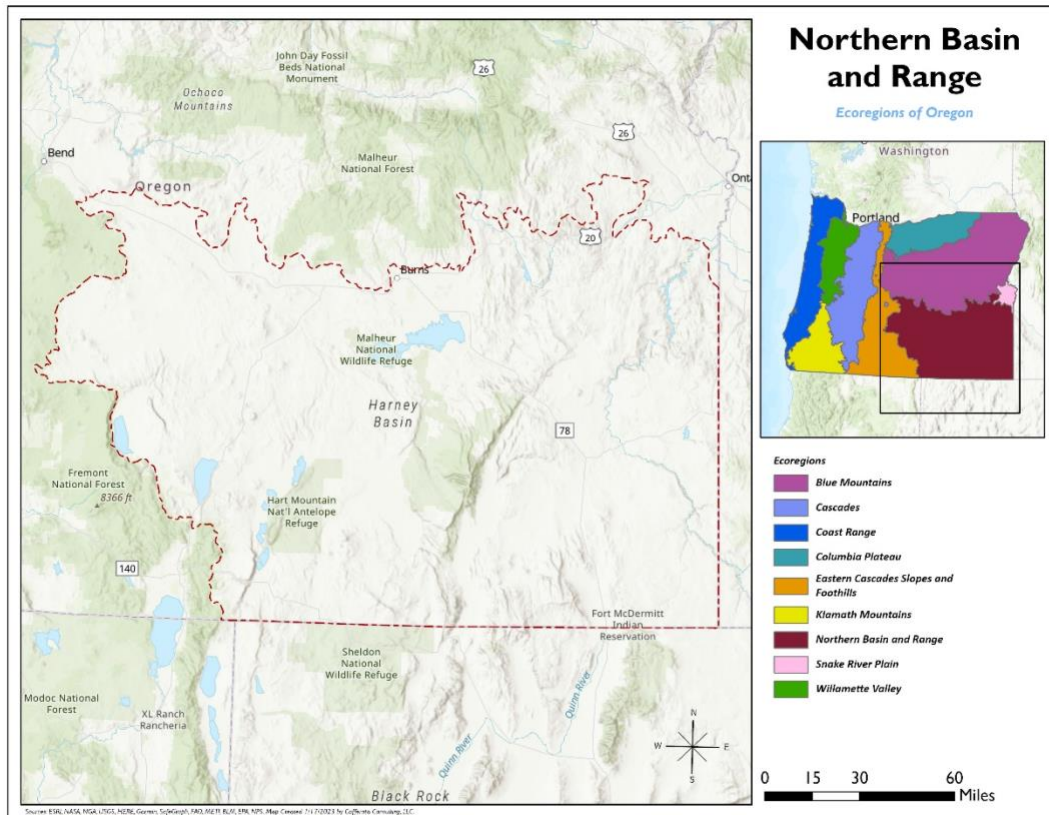
*Species links provided when available

All management recommendations assume that operators and land managers are following all applicable BMPs, laws, and regulations.

OREGON

NORTHERN BASIN & RANGE Ecoregion

G1 and G2 Species Habitat Management Guidelines



All management recommendations assume that operators and land managers are following all applicable BMPs, laws, and regulations.