

# MONTANA NORTHWESTERN GREAT PLAINS ECOREGION

## G1 and G2 Species Habitat Management Guidelines



### INTRODUCTION

The Sustainable Forestry Initiative® (SFI) [2022 Standards](#) include requirements that promote and conserve Forests with Exceptional Conservation Value (FECV), which includes critically imperiled (G1) and imperiled (G2) species. This fact sheet summarizes the analysis of FECV habitat within this ecoregion and provides habitat management recommendations that would benefit species potentially found here.

### HABITAT TYPES

- Mixed Conifer Forest
- Riparian/Streams
- Special Sites (Bare Rock/Talus, Bog/Fen, Grassland, Shrubland)

### MIXED CONIFER FOREST MANAGEMENT

- Protect known locations
- Retain legacy trees, stumps, and logs
- Retain large diameter trees with cavities or broken tops
- Leave skips and gaps with dense shrub component
- Retain large slash into piles

### RIPARIAN/STREAMS MANAGEMENT

- Protect known locations
- Maintain well vegetated riparian buffers
- Plant a diversity of both hardwood and conifer trees in the riparian zone
- Retain large diameter trees near streams and rivers
- Buffer wetlands, springs, and headwater areas

### SPECIAL SITES MANAGEMENT

- Protect known locations
- Buffer special sites
- Provide floral resources such as Asters, Chrysothamnus, and Cirsium



**Suckley Cuckoo Bumble Bee**



**Whooping Crane**



**Black-footed Ferret**

*All management recommendations assume that operators and land managers are following all applicable BMPs, laws, and regulations.*

# MONTANA NORTHWESTERN GREAT PLAINS ECOREGION



## G1 and G2 Species Habitat Management Guidelines

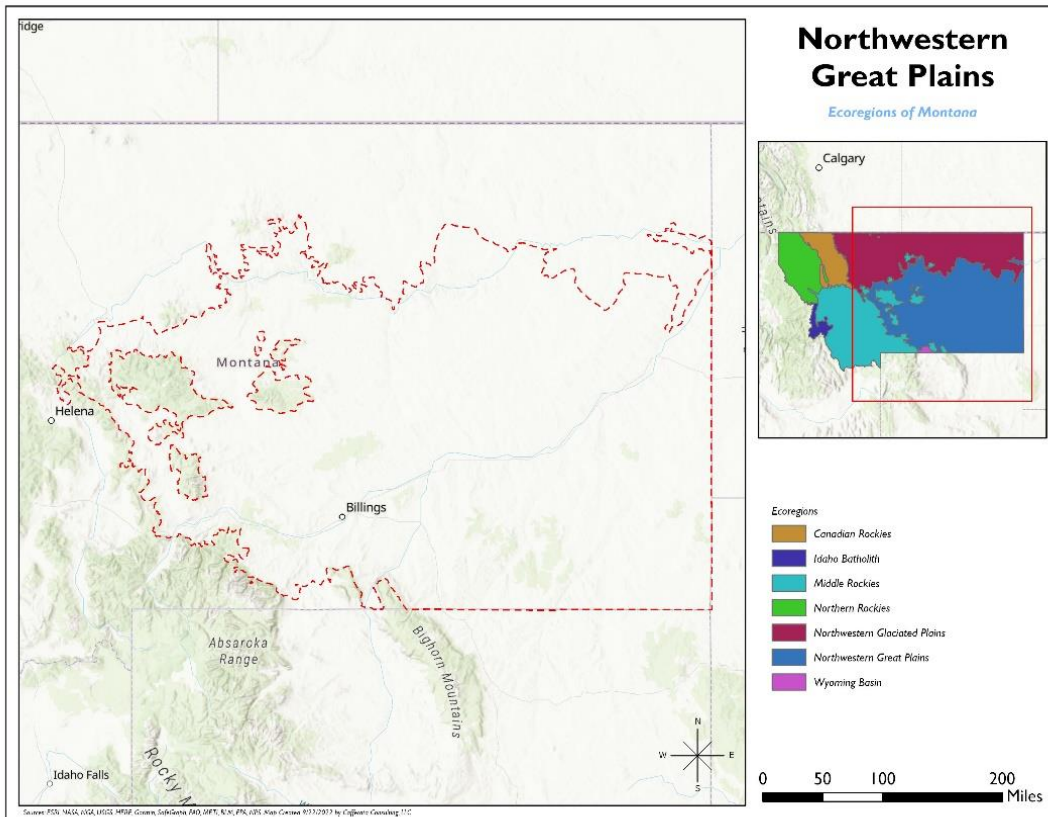
SCIENTIFIC NAME	COMMON NAME	HABITAT	STATUS
<i>Oreohelix pygmaea</i>	<a href="#">Pygmy Mountainsnail</a>	Bare Rock/Talus	G2
<i>Erigeron parryi</i>	<a href="#">Parry's Fleabane</a>	Bare Rock/Talus	G2G3
<i>Atrytone arogos</i>	<a href="#">Arogos Skipper</a>	Bog/Fen	G2G3
<i>Xanthoparmelia newyomingica</i>	<a href="#">A Rock-shield Lichen</a>	Grassland	G1
<i>Mustela nigripes</i>	<a href="#">Black-footed Ferret</a>	Grassland	G1
<i>Cirsium longistylum</i>	<a href="#">Long-styled Thistle</a>	Grassland	G2G3
<i>Physaria lesicii</i>	Lesica's Bladderpod	Mixed Conifer Forest	G2
<i>Myotis septentrionalis</i>	<a href="#">Northern Myotis</a>	Mixed Conifer Forest	G2G3
<i>Physella zionis</i>	<a href="#">Wet-rock Physa</a>	Riparian/Streams	G1
<i>Grus americana</i>	<a href="#">Whooping Crane</a>	Riparian/Streams	G1
<i>Anepeorus rusticus</i>	<a href="#">A Sand-dwelling Mayfly</a>	Riparian/Streams	G2
<i>Scaphirhynchus albus</i>	<a href="#">Pallid Sturgeon</a>	Riparian/Streams	G2
<i>Mimulus hymenophyllus</i>	<a href="#">Thinsepal monkeyflower</a>	Riparian/Streams	G2
<i>Heptagenia whitingi</i>	<a href="#">A Mayfly</a>	Riparian/Streams	G2G3
<i>Leucrocuta petersi</i>	<a href="#">A Mayfly</a>	Riparian/Streams	G2G3
<i>Bombus suckleyi</i>	<a href="#">Suckley Cuckoo Bumble Bee</a>	Shrubland	G2G3

\*Species links provided when available

All management recommendations assume that operators and land managers are following all applicable BMPs, laws, and regulations.

# MONTANA NORTHWESTERN GREAT PLAINS ECOREGION

## G1 and G2 Species Habitat Management Guidelines



All management recommendations assume that operators and land managers are following all applicable BMPs, laws, and regulations.