

WASHINGTON OKANOGAN ECOREGION

G1 and G2 Species Habitat Management Guidelines



INTRODUCTION

The Sustainable Forestry Initiative® (SFI) [2022 Standards](#) include requirements that promote and conserve Forests with Exceptional Conservation Value (FECV), which includes critically imperiled (G1) and imperiled (G2) species. This fact sheet summarizes the analysis of FECV habitat within this ecoregion and provides habitat management recommendations that would benefit species potentially found here.

HABITAT TYPES

- Mixed Conifer Forest
- Riparian, Streams, Freshwater Lakes and Wetlands
- Special Sites (Bare Rock/Talus, Grassland, Pools)

MIXED CONIFER FOREST MANAGEMENT

- Protect known locations
- Retain legacy trees, stumps, and logs
- Retain large diameter trees with cavities or broken tops
- Leave skips and gaps with dense shrub component
- Retain large slash into piles

RIPARIAN, STREAMS, FRESHWATER LAKES AND WETLANDS MANAGEMENT

- Protect known locations
- Maintain well vegetated buffers
- Plant a diversity of both hardwood and conifer trees
- Retain large diameter trees
- Buffer wetlands, lakes, pools, springs, and headwater areas

SPECIAL SITE (BARE ROCK/TALUS, GRASSLAND, POOLS) MANAGEMENT

- Protect known locations
- Buffer special sites



Ute Ladies'-tresses



Ashy pebblesnail



Phipps' Hawthorn

All management recommendations assume that operators and land managers are following all applicable BMPs, laws, and regulations.

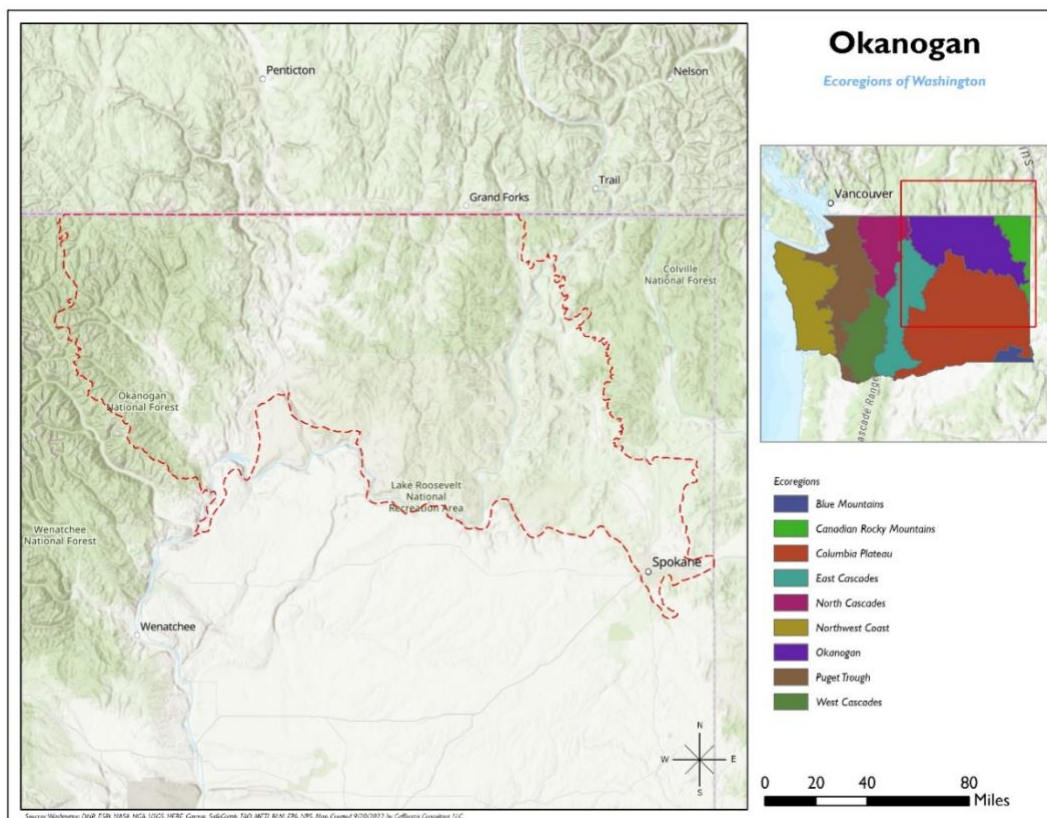
WASHINGTON OKANOGAN ECOREGION

G1 and G2 Species Habitat Management Guidelines



SCIENTIFIC NAME	COMMON NAME	HABITAT	STATUS
<i>Pristiloma idahoense</i>	Thinlip tightcoil	Bare rock/Talus	G2G3
<i>Amnicola sp. 2</i>	Washington dusksnail	Freshwater Lakes	G1
<i>Astragalus arrectus</i>	Palouse Milkvetch	Grassland	G2
<i>Oreohelix junii</i>	Grand Coulee mountainsnail	Mixed Conifer Forest	G2
<i>Isoetes minima</i>	Midget Quillwort	Pools	G1G2
<i>Branchinecta cornigera</i>	Horned Fairy Shrimp	Pools	G2
<i>Branchinecta campestris</i>	Pocked Pouch Fairy Shrimp	Pools	G2
<i>Fluminicola fuscus</i>	Ashy pebblesnail	Riparian or Streams	G2
<i>Fisherola nuttalli</i>	Shortface lanx	Riparian or Streams	G2
<i>Spiranthes diluvialis</i>	Ute Ladies'-tresses	Riparian or Streams	G2G3
<i>Crataegus phippsii</i>	Phipps' Hawthorn	Wetland	G2G3

*Species links provided when available



All management recommendations assume that operators and land managers are following all applicable BMPs, laws, and regulations.