

WASHINGTON PUGET TROUGH ECOREGION

G1 and G2 Species Habitat Management Guidelines



INTRODUCTION

The Sustainable Forestry Initiative® (SFI) [2022 Standards](#) include requirements that promote and conserve Forests with Exceptional Conservation Value (FECV), which includes critically imperiled (G1) and imperiled (G2) species. This fact sheet summarizes the analysis of FECV habitat within this ecoregion and provides habitat management recommendations that would benefit species potentially found here.

HABITAT TYPES

- Forest Edge
- Riparian, Streams, Wetlands
- Special Sites (Bare Rock/Talus, Grassland)

FOREST EDGE MANAGEMENT

- Protect known locations
- Apply buffer or light touch
- Provide floral resources such as Asters, Chrysothamnus, and Cirsium

RIPARIAN, STREAMS, WETLANDS MANAGEMENT

- Protect known locations
- Maintain well vegetated buffers
- Plant a diversity of both hardwood and conifer trees
- Retain large diameter trees near streams and rivers
- Buffer wetlands, springs, and headwater areas

SPECIAL SITES (BARE ROCK/TALUS, GRASSLAND) MANAGEMENT

- Protect known locations
- Buffer special sites



Suckley bumble bee



Victoria's Indian-paintbrush



Mardon Skipper

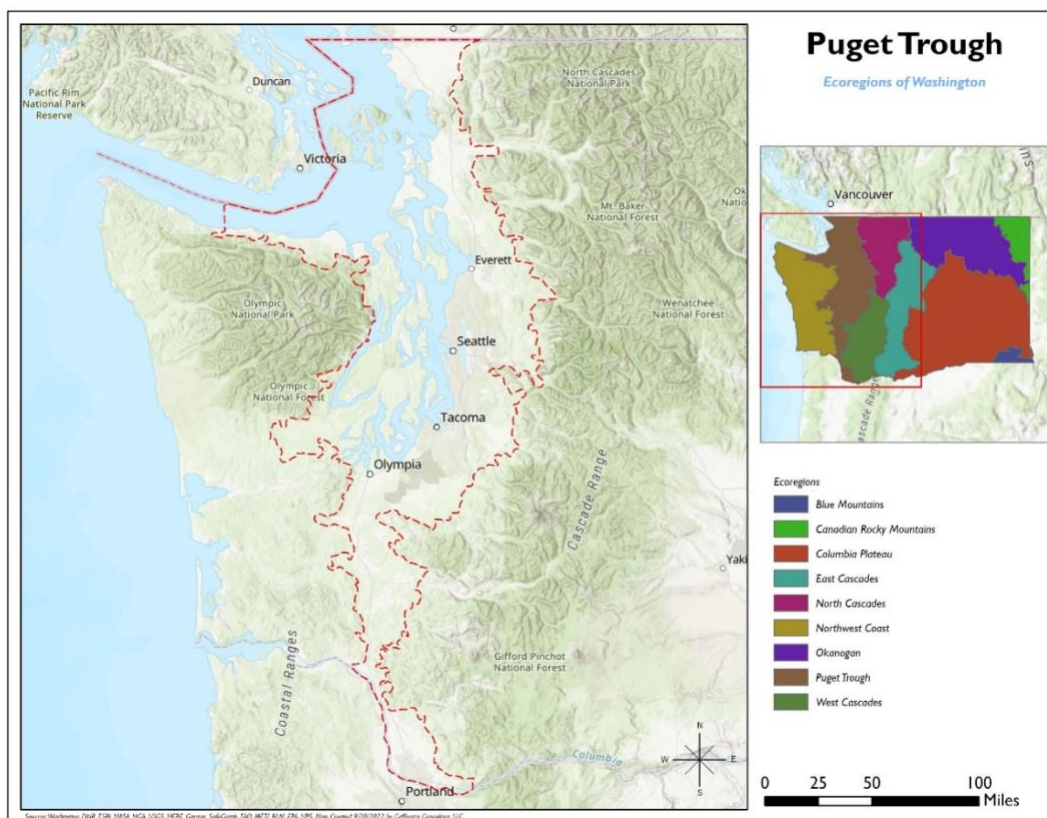
WASHINGTON PUGET TROUGH ECOREGION

G1 and G2 Species Habitat Management Guidelines



SCIENTIFIC NAME	COMMON NAME	HABITAT	STATUS
<i>Arabis olympica</i>	Columbia Gorge Rockcress	Bare Rock/Talus	G1
<i>Bombus suckleyi</i>	Suckley bumble bee	Forest Edge	G1G3
<i>Meconella oregana</i>	White Meconella	Grassland	G2
<i>Polites mardon</i>	Mardon Skipper	Grassland	G2G3
<i>Catostomus sp. 4</i>	Salish Sucker	Riparian or Streams	G1
<i>Castilleja victoriana</i>	Victoria's Indian-paintbrush	Riparian or Streams	G1
<i>Sidalcea hirtipes</i>	Bristly-stem Sidalcea	Riparian or Streams	G2
<i>Fluminicola virens</i>	Olympia pebblesnail	Riparian or Streams	G2
<i>Sidalcea nelsoniana</i>	Nelson's Sidalcea	Riparian or Streams	G2G3
<i>Eanus hatchi</i>	Hatch's Click Beetle	Wetland	G1
<i>Rana pretiosa</i>	Oregon Spotted Frog	Wetland	G2

*species links provided when available



All management recommendations assume that operators and land managers are following all applicable BMPs, laws, and regulations.