

Tinta Vital

The Secrets of Future Forests



SUSTAINABLE
FORESTRY
INITIATIVE

SFI-00001

pci media
Tell a story, change the world

COMICS
UNITING
NATIONS

unicef





Forests cover one third of the Earth's surface and without them humans and animals could not survive!

Forests help conserve and clean our water.

They generate jobs for millions of people around the world.

The plants and animals of a forest ecosystem depend on each other to survive and thrive.

Forests are home to the majority (80%) of all land-based plant and animal species!

March 21 is the International Day of Forests. What can you and your friends do for forests on their special day?

The Secrets of Future Forests

Produced by: Sustainable Forestry Initiative,
PCI Media and Tinta Vital

Executive Producer: Meesha Brown, President, PCI Media

Executive Coordination: Jocelyn Iverson and Beatriz Padilla

Editorial Direction: Laura Talavera

Script: Beatriz Padilla and SFI

Artwork: Jorge Mendoza

Technical Support: Emilio Arias

Translation: Beatriz Padilla

Advisors: Diego Pérez Salicrup, Jürgen Hoth, Laura Kuri

Special thanks to: Amanda Brown, Loretta Cheung and Graciela Leal



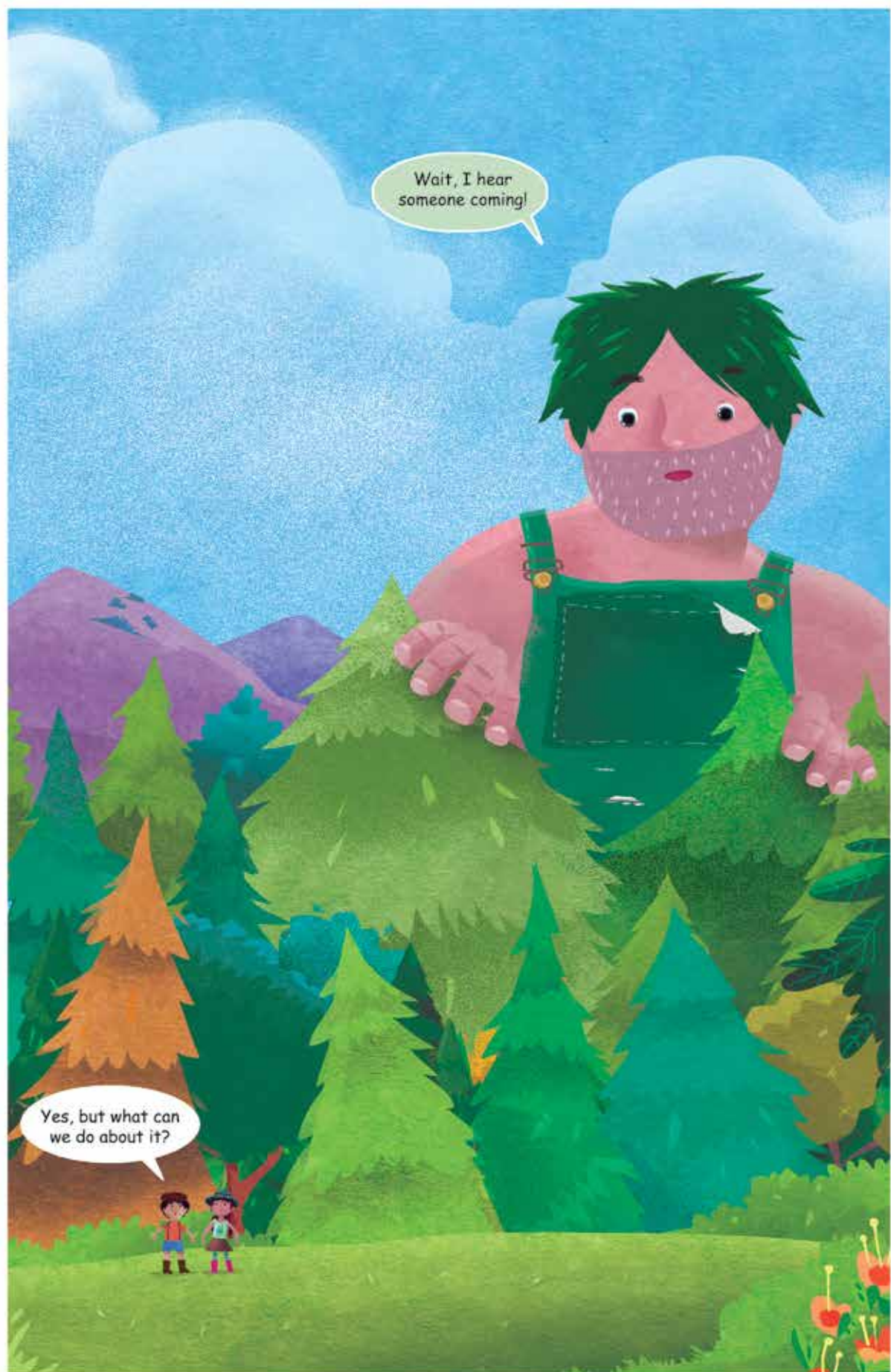
All around the world, plants and animals
are feeling the effects of a changing planet...



Plants... Animals... And giants!





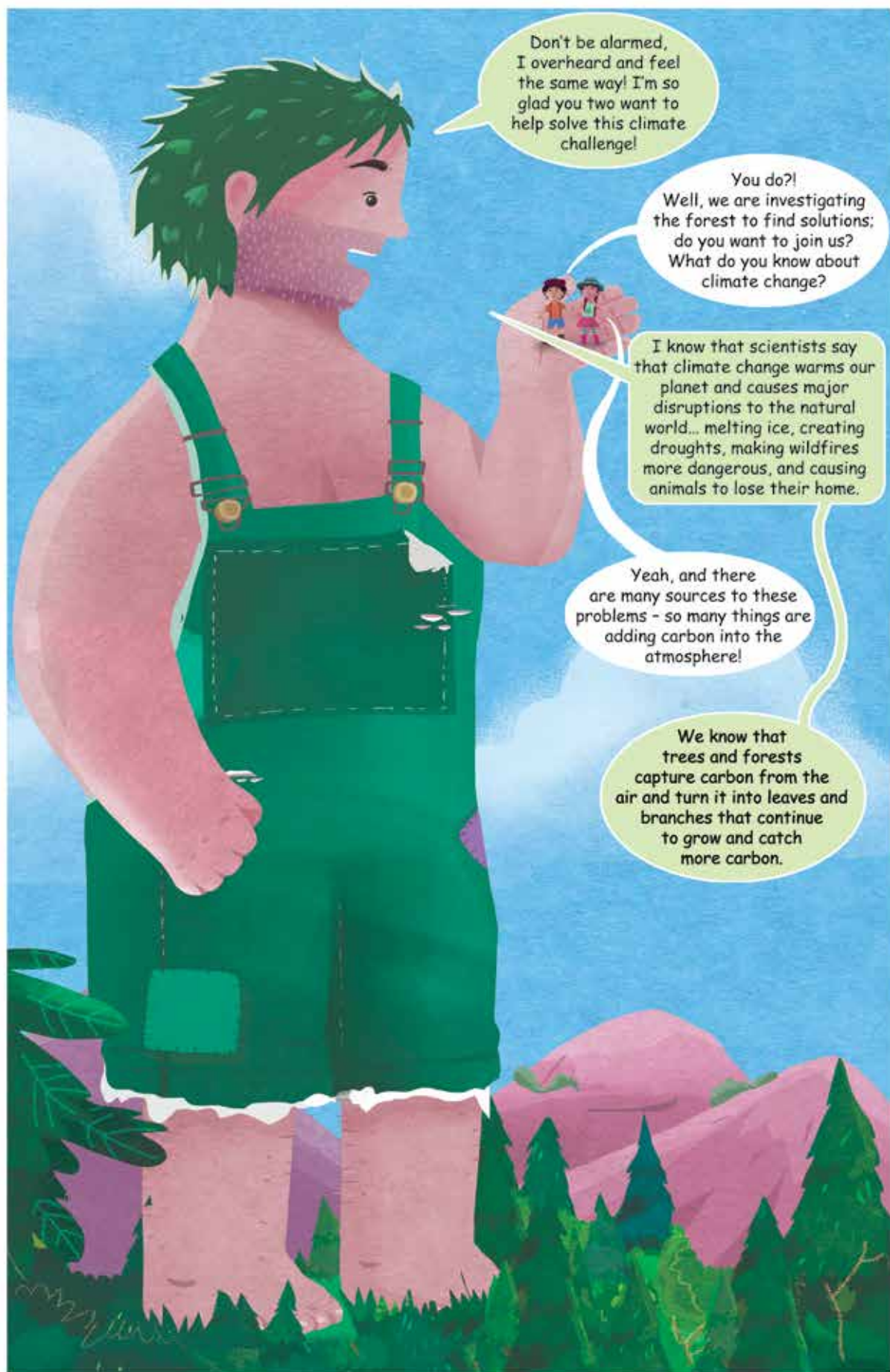


Wait, I hear
someone coming!

Yes, but what can
we do about it?







Don't be alarmed, I overheard and feel the same way! I'm so glad you two want to help solve this climate challenge!

You do?!
Well, we are investigating the forest to find solutions; do you want to join us? What do you know about climate change?

I know that scientists say that climate change warms our planet and causes major disruptions to the natural world... melting ice, creating droughts, making wildfires more dangerous, and causing animals to lose their home.

Yeah, and there are many sources to these problems - so many things are adding carbon into the atmosphere!

We know that trees and forests capture carbon from the air and turn it into leaves and branches that continue to grow and catch more carbon.





How do forests
serve life on Earth?

Where does wildlife
live?

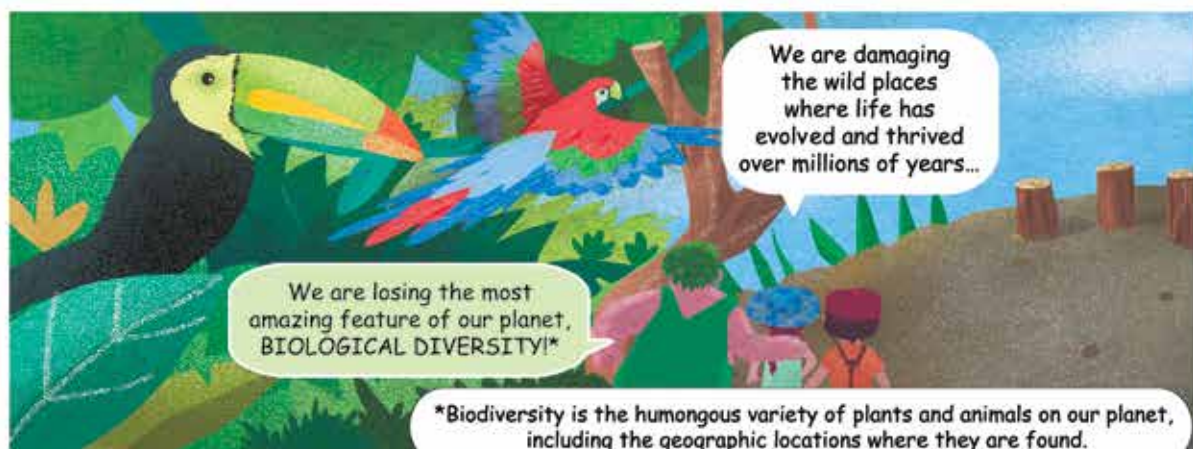
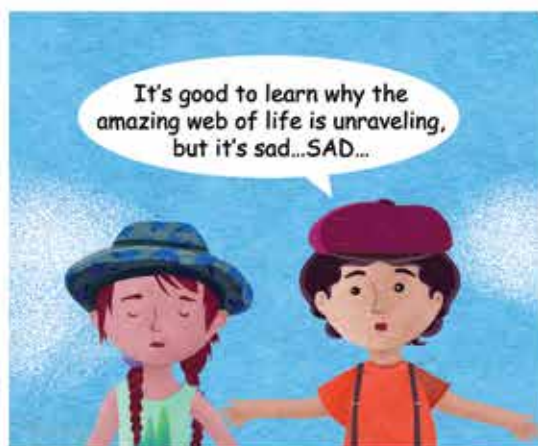
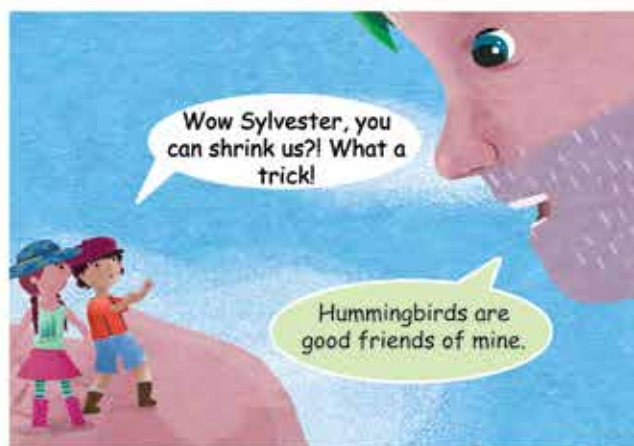
Can you see how
the roots hold soil in place
and protect it from
the rain and wind?

See how soil
absorbs rain,
and filters it...

And provides clean and
abundant water!

Forests regulate
local temperatures and
provide clean air.

How do forests
contribute to your own
well-being?





A reason why the world's forests disappear is the removal of trees to use the land for something other than as a forest.







Hello everyone!
Please tell us how to
meet the needs of today
while ensuring we can also meet
the needs of future generations.

This is the
meaning of the word
"SUSTAINABLE".

This means using the
forest in a smart way, so its
goodness can be enjoyed now
and in the future.


Harvest trees,
but conserve the forest
and its soil:
they provide clean water!

Respect forests as
home to many
wildlife!

Care for breeding and
nesting places!

Please respect
older trees because
they produce seeds,
and baby trees...

And be sure
to plant new
trees!



Forests are
a source of jobs for millions of
families around the world.

How many
forest-based products
can you see around you
just now?

Forests
provide raw materials
for a huge number
of products.

Like pencils...
or even ice cream!

Sustainable forest management
means making sure that forests are
healthy, yes, but also productive.

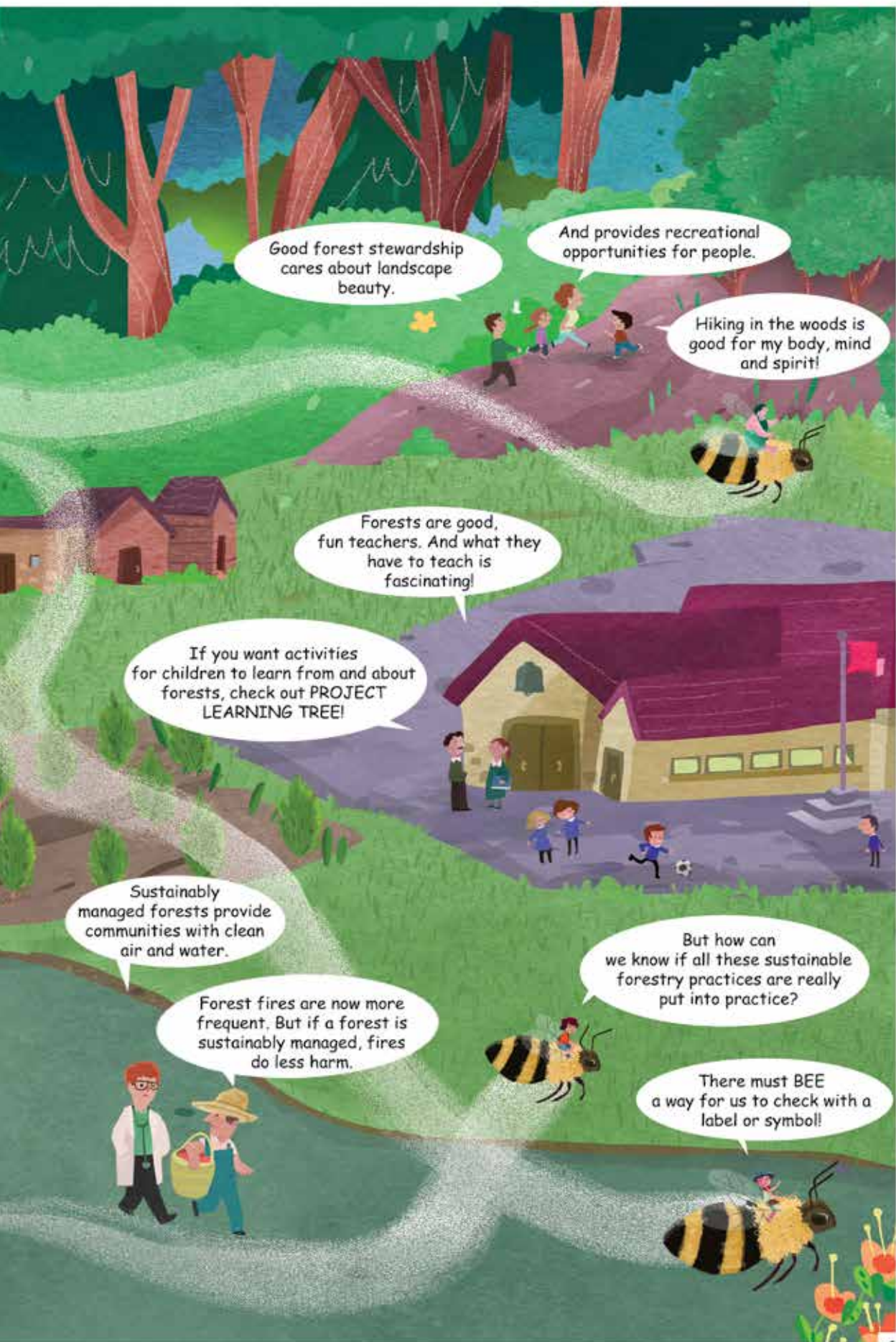
Mom, paper packaging
is better for the planet than all
that plastic which pollutes our
oceans!

Wood products that have
long lives, like furniture, store
carbon and keep it out of the
atmosphere!

Loggers must receive training
on how to use forest land responsibly.

And research is necessary to
continually improve
forest stewardship!

So, using a forest responsibly means
caring for the environment, and also for
the community and the economy.



Good forest stewardship cares about landscape beauty.

And provides recreational opportunities for people.

Hiking in the woods is good for my body, mind and spirit!

Forests are good, fun teachers. And what they have to teach is fascinating!

If you want activities for children to learn from and about forests, check out PROJECT LEARNING TREE!

Sustainably managed forests provide communities with clean air and water.

Forest fires are now more frequent. But if a forest is sustainably managed, fires do less harm.

But how can we know if all these sustainable forestry practices are really put into practice?

There must BEE a way for us to check with a label or symbol!

This is what a certification label looks like:



SUSTAINABLE
FORESTRY
INITIATIVE

Certified Chain of Custody
Promoting Sustainable Forestry

www.sfiprogram.org

SFI-00001

SFI on-product labels help people find products that come from organizations certified to an SFI standard.

When people use this symbol, it means we are doing the right thing to manage forests for all sort of benefits.

Working together
we can find solutions to many
of the world's problems.

That's why SFI works with the forest sector, nature conservation groups, academics, researchers, companies, educators, landowners, local communities, Indigenous Peoples, and governments.

Supporting forest certification is one of the best things you can do for forests.



Certification is one important part of the solution, and there are many ways you can help support the planet, like having a green job when you're older.

There are lots of jobs that help the environment! Let's take a look at a few...

- Forester
- Environmental Educator
- Natural Resource Economist
- Nature Photographer
- Wildland Firefighter
- Architect
- Wood Scientist
- Paper manufacturer
- Hydrologist
- Packaging Technologist
- Carbon modeler

And many more!











SFI

The SUSTAINABLE FORESTRY INITIATIVE:

Envisions a world that values and benefits from sustainably managed forests

SFI certifies forests larger than the size of Japan, Spain, and New Zealand - combined!

SFI-certified organizations harvest less than 1% of their forests every year, and plant more than 3 million trees per day in the US and Canada.

Look for the SFI label.
It's on over 300,000 products sold in nearly 120 countries, showing they come from well-managed forests!

www.forests.org

 <https://www.facebook.com/SustainableForestryInitiative>

 <https://twitter.com/sfiprogram>

 <https://www.youtube.com/user/SFIProgram>

SFI CANADA
1306 Wellington Street
West Suite 400
Ottawa, ON, K1Y 3B2
Phone: 613-747-2454

SFI USA
2121 K Street, NW,
Suite 750
Washington, DC 20037
Phone: 202-596-3450

LOOK AROUND YOU...

Do you recognize products that come from a forest
and make your life better?

4 EASY THINGS YOU CAN DO TO SUPPORT FORESTS:

- ✦ Ask your parents to buy products that are responsibly made and do not damage the environment.
- ✦ Install a bird feeder and plant a native garden for pollinators like bees and butterflies.
- ✦ Start a recycling project at your school.
- ✦ Learn more about forest plants and animals. You will find lots of activities at PLT.org



The impact of responsibly-managed forests is seen through all the 17 Sustainable Development Goals, particularly SDG 15 – Life on Land.

15 LIFE ON LAND



“Sustainably manage forests, combat desertification, halt and reverse land degradation, halt biodiversity loss”.




SUSTAINABLE
FORESTRY
INITIATIVE

SFI-00001



PROJECT
LEARNING
TREE

PLT is an initiative of SFI 



WORLD'S
LARGEST
LESSON



Tinta Vital