

# IDAHO SNAKE RIVER PLAIN ECOREGION

## G1 and G2 Species Habitat Management Guidelines



### INTRODUCTION

The Sustainable Forestry Initiative® (SFI) [2022 Standards](#) include requirements that promote and conserve Forests with Exceptional Conservation Value (FECV), which includes critically imperiled (G1) and imperiled (G2) species. This fact sheet summarizes the analysis of FECV habitat within this ecoregion and provides habitat management recommendations that would benefit species potentially found here.

### HABITAT TYPES

- Forest Edge
- Riparian or Stream

### FOREST EDGE MANAGEMENT

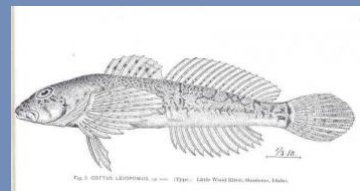
- Protect known locations
- Buffer special sites

### RIPARIAN OR STREAM MANAGEMENT

- Protect known locations
- Maintain well vegetated riparian buffers
- Plant a diversity of both hardwood and conifer trees in the riparian zone
- Retain large diameter trees near streams and rivers
- Buffer wetlands, springs, and headwater areas



**Douglas' Clover**



**Wood River Sculpin**



**Ute Ladies' Tresses**

*All management recommendations assume that operators and land managers are following all applicable BMPs, laws, and regulations.*

# IDAHO SNAKE RIVER PLAIN ECOREGION

## G1 and G2 Species Habitat Management Guidelines

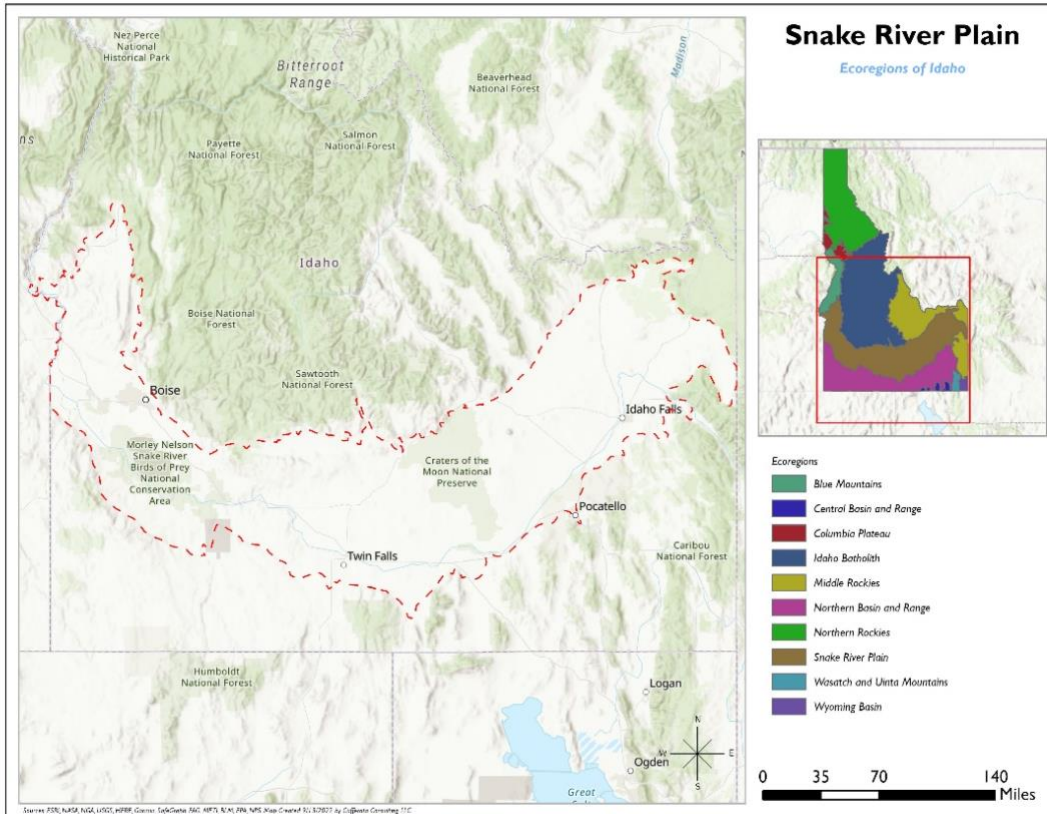


SCIENTIFIC NAME	COMMON NAME	HABITAT	Status
<i>Melanoplus phobeticus</i>	<a href="#">A Spur-throat Grasshopper</a>	Forest Edge	G1G2
<i>Melanoplus pyro</i>	<a href="#">A Spur-throat Grasshopper</a>	Forest Edge	G1G2
<i>Urocitellus brunneus</i>	<a href="#">Northern Idaho Ground Squirrel</a>	Forest Edge	G2
<i>Idaholanx fresti</i>	<a href="#">Banbury Springs Limpet</a>	Riparian or Streams	G1
<i>Taylorconcha serpenticola</i>	<a href="#">Bliss Rapids Snail</a>	Riparian or Streams	G1
<i>Pyrgulopsis bruneauensis</i>	<a href="#">Bruneau Hot Springsnail</a>	Riparian or Streams	G1
<i>Capnura anas</i>	<a href="#">Duckhead Snowfly</a>	Riparian or Streams	G1
<i>Carex aboriginum</i>	<a href="#">Indian Valley Sedge</a>	Riparian or Streams	G1
<i>Branchinecta raptor</i>	<a href="#">Raptor Fairy Shrimp</a>	Riparian or Streams	G1
<i>Physella natricina</i>	<a href="#">Snake River Physa</a>	Riparian or Streams	G1
<i>Grus americana</i>	<a href="#">Whooping Crane</a>	Riparian or Streams	G1
<i>Limnephilus challisa</i>	<a href="#">A Caddisfly</a>	Riparian or Streams	G1G2
<i>Trifolium douglasii</i>	<a href="#">Douglas' Clover</a>	Riparian or Streams	G2
<i>Astragalus diversifolius</i>	<a href="#">Meadow Milkvetch</a>	Riparian or Streams	G2
<i>Cottus greenei</i>	<a href="#">Shoshone Sculpin</a>	Riparian or Streams	G2
<i>Cottus leiopomus</i>	<a href="#">Wood River Sculpin</a>	Riparian or Streams	G2
<i>Spiranthes diluvialis</i>	<a href="#">Ute Ladies' Tresses</a>	Riparian or Streams	G2G3

\*Species links provided when available

# IDAHO SNAKE RIVER PLAIN ECOREGION

## G1 and G2 Species Habitat Management Guidelines



All management recommendations assume that operators and land managers are following all applicable BMPs, laws, and regulations.