

CALIFORNIA

SONORAN BASIN & RANGE ECOREGION

G1 and G2 Species Habitat Management Guidelines



INTRODUCTION

The Sustainable Forestry Initiative® (SFI) [2022 Standards](#) include requirements that promote and conserve Forests with Exceptional Conservation Value (FECV), which includes critically imperiled (G1) and imperiled (G2) species. This fact sheet summarizes the analysis of FECV habitat within this ecoregion and provides habitat management recommendations that would benefit species potentially found here.

HABITAT TYPES

- Grassland
- Mixed Conifer Forest
- Riparian/Streams/Wetlands
- Shrubland/Chaparral
- Special Sites (Bare Rock/Talus, Desert, Dunes)

GRASSLAND MANAGEMENT

- Protect known locations
- Buffer grassland areas

MIXED CONIFER FOREST MANAGEMENT

- Protect known locations
- Retain legacy trees, stumps, and logs
- Retain large diameter trees with cavities or broken tops
- Leave skips and gaps with dense shrub component
- Retain large slash into piles

RIPARIAN/STREAMS/WETLANDS MANAGEMENT

- Protect known locations
- Maintain well vegetated riparian buffers
- Plant a diversity of both hardwood and conifer trees
- Retain large diameter trees near streams, rivers and wetlands
- Buffer wetlands, springs, and headwater areas



California Reg-legged Frog



California Condor



Desert Pupfish

All management recommendations assume that operators and land managers are following all applicable BMPs, laws, and regulations.

CALIFORNIA

SONORAN BASIN & RANGE ECOREGION

G1 and G2 Species Habitat Management Guidelines



SHRUBLAND/CHAPARRAL MANAGEMENT

- Protect known locations
- Buffer shrubland and chaparral areas

SPECIAL SITES MANAGEMENT

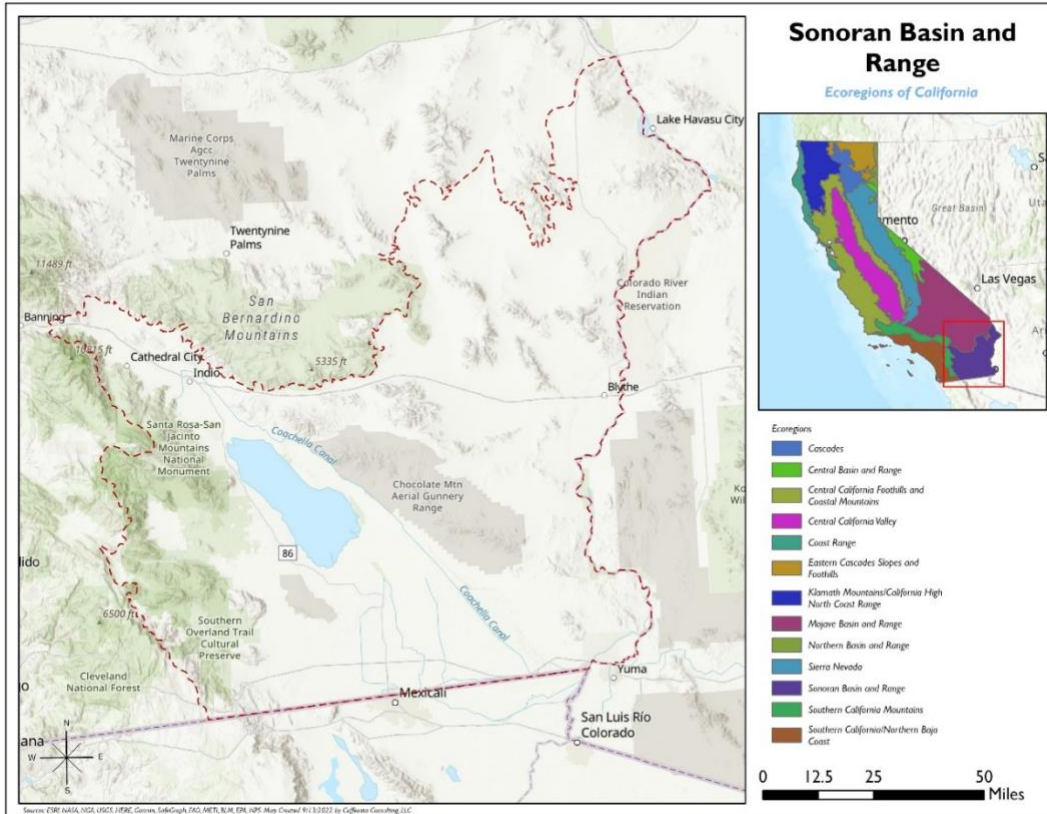
- Protect known locations
- Maintain and buffer special sites

SCIENTIFIC NAME	COMMON NAME	HABITAT	STATUS
<i>Spermolepis infernensis</i>		Bare Rock/Talus	G1
<i>Berberis harrisoniana</i>	Kofa Barberry	Desert	G2
<i>Euparagia unidentata</i>	a wasp	Dunes	G1
<i>Bombus crotchii</i>	Crotch's Bumble Bee	Grassland	G2
<i>Symphyotrichum defoliatum</i>	San Bernardino Aster	Grassland	G2
<i>Gymnogyps californianus</i>	California Condor	Mixed Conifer Forest	G1
<i>Astragalus oocarpus</i>	San Diego Milkvetch	Mixed Conifer Forest	G2
<i>Marina orcuttii</i>	Sonoran Desert Marina	Mixed Conifer Forest	G2
<i>Draba corrugata</i>	Southern California Whitlow-grass	Mixed Conifer Forest	G2
<i>Gila elegans</i>	Bonytail	Riparian/Streams	G1
<i>Ptychocheilus lucius</i>	Colorado Pikeminnow	Riparian/Streams	G1
<i>Rorippa gambelii</i>	Gambel's Watercress	Riparian/Streams	G1
<i>Trichinorhipis knulli</i>	Knull's Metallic Wood-boring Beetle	Riparian/Streams	G1
<i>Xyrauchen texanus</i>	Razorback Sucker	Riparian/Streams	G1
<i>Rana muscosa</i>	Southern Mountain Yellow-legged Frog	Riparian/Streams	G1
<i>Rana draytonii</i>	California Red-legged Frog	Riparian/Streams	G2
<i>Hemizonia floribunda</i>	Tecate Tarweed	Riparian/Streams	G2
<i>Spea hammondi</i>	Western Spadefoot	Riparian/Streams	G2
<i>Tharsalea hermes</i>	Hermes Copper	Shrubland/Chaparral	G1
<i>Atriplex parishii</i>	Parish's Saltbush	Shrubland/Chaparral	G1
<i>Linanthus bellus</i>	Desert Beauty	Shrubland/Chaparral	G2
<i>Cyprinodon macularius</i>	Desert Pupfish	Wetland	G1

*Species links provided when available

All management recommendations assume that operators and land managers are following all applicable BMPs, laws, and regulations.

CALIFORNIA SONORAN BASIN & RANGE ECOREGION G1 and G2 Species Habitat Management Guidelines



All management recommendations assume that operators and land managers are following all applicable BMPs, laws, and regulations.