

SOUTHERN CALIFORNIA MOUNTAINS ECOREGION



G1 and G2 Species Habitat Management Guidelines

INTRODUCTION

The Sustainable Forestry Initiative® (SFI) [2022 Standards](#) include requirements that promote and conserve Forests with Exceptional Conservation Value (FECV), which includes critically imperiled (G1) and imperiled (G2) species. This fact sheet summarizes the analysis of FECV habitat within this ecoregion and provides habitat management recommendations that would benefit species potentially found here.

HABITAT TYPES

- Mixed Conifer Forest
- Riparian/Streams/Wetlands
- Shrubland/Chaparral
- Special Sites (Bare Rock/Talus, Barrens, Cliff, Forest Edge, Grassland, Springs, Temporary Pool, Wet Meadow)

MIXED CONIFER FOREST MANAGEMENT

- Protect known locations
- Retain legacy trees, stumps, and logs
- Retain large diameter trees with cavities or broken tops
- Leave skips and gaps with dense shrub component
- Retain large slash into piles

RIPARIAN/STREAMS/WETLANDS MANAGEMENT

- Protect known locations
- Maintain well vegetated riparian buffers
- Plant a diversity of both hardwood and conifer trees
- Retain large diameter trees near streams, rivers and wetlands
- Buffer wetlands, springs, and headwater areas

SHRUBLAND/CHAPARRAL MANAGEMENT

- Protect known locations
- Buffer shrubland and chaparral areas

SPECIAL SITES MANAGEMENT

- Protect known locations
- Maintain and buffer special sites
- Protect known locations



Dunn's Mariposa Lily



Arroyo Toad



Tehachapi Slender Salamander

All management recommendations assume that operators and land managers are following all applicable BMPs, laws, and regulations.

SOUTHERN CALIFORNIA MOUNTAINS ECOREGION



G1 and G2 Species Habitat Management Guidelines

SCIENTIFIC NAME	COMMON NAME	HABITAT	STATUS
<i>Haplodontium tehamense</i>	Lassen Peak Copper Moss	Bare Rock/Talus	G2
<i>Potentilla rimicola</i>	Cliff Cinquefoil	Bare Rock/Talus	G2
<i>Phlox dolichantha</i>	Bear Valley Phlox	Barrens	G2
<i>Astragalus leucolobus</i>	Big Bear Valley Woollypod	Barrens	G2
<i>Salvia brandegeei</i>	Brandegee's Sage	Cliff	G2
<i>Taraxacum californicum</i>	California Dandelion	Forest Edge	G1
<i>Bombus crotchii</i>	Crotch's Bumble Bee	Grassland	G2
<i>Symphotrichum defoliatum</i>	San Bernardino Aster	Grassland	G2
<i>Eriogonum evanidum</i>	a buckwheat	Mixed Conifer Forest	G1
<i>Linanthus killipii</i>	Baldwin Lake Linanthus	Mixed Conifer Forest	G1
<i>Horkelia wilderae</i>	Barton Flats Horkelia	Mixed Conifer Forest	G1
<i>Eremogone ursina</i>	Bear Valley Sandwort	Mixed Conifer Forest	G1
<i>Gymnogyps californianus</i>	California Condor	Mixed Conifer Forest	G1
<i>Streptanthus juneae</i>	June's Jewelflower	Mixed Conifer Forest	G1
<i>Stylocline masonii</i>	Mason's Neststraw	Mixed Conifer Forest	G1
<i>Arctostaphylos otayensis</i>	Otay Manzanita	Mixed Conifer Forest	G1
<i>Cistanthe pygmaea</i>	Pygmy Pussy-paws	Mixed Conifer Forest	G1
<i>Galium grande</i>	San Gabriel Bedstraw	Mixed Conifer Forest	G1
<i>Rothelix warnerfontis</i>	Warner Springs Shoulderband	Mixed Conifer Forest	G1
<i>Chorizanthe blakleyi</i>	Blakey's Spineflower	Mixed Conifer Forest	G2
<i>Calochortus dunnii</i>	Dunn's Mariposa Lily	Mixed Conifer Forest	G2
<i>Symphotrichum greatae</i>	Greata's Aster	Mixed Conifer Forest	G2
<i>Camissonia hardhamiae</i>	Hardham's Evening-primrose	Mixed Conifer Forest	G2
<i>Mimulus purpureus</i>	Little Purple Monkeyflower	Mixed Conifer Forest	G2
<i>Castilleja gleasoni</i>	Mt. Gleason paintbrush	Mixed Conifer Forest	G2
<i>Layia heterotricha</i>	Pale-yellow Layia	Mixed Conifer Forest	G2
<i>Erigeron parishii</i>	Parish's Daisy	Mixed Conifer Forest	G2
<i>Boechera parishii</i>	Parish's Rockcross	Mixed Conifer Forest	G2
<i>Navarretia setiloba</i>	Piute Mountains Navarretia	Mixed Conifer Forest	G2
<i>Castilleja lasiorhyncha</i>	San Bernardino Owl's-clover	Mixed Conifer Forest	G2
<i>Ceanothus cyaneus</i>	San Diego Ceanothus	Mixed Conifer Forest	G2
<i>Astragalus oocarpus</i>	San Diego Milkvetch	Mixed Conifer Forest	G2
<i>Glyptostoma gabrielse</i>	San Gabriel Chestnut	Mixed Conifer Forest	G2
<i>Linanthus concinnus</i>	San Gabriel Linanthus	Mixed Conifer Forest	G2
<i>Batrachoseps gabrieli</i>	San Gabriel Slender Salamander	Mixed Conifer Forest	G2
<i>Leptodactylon jaegeri</i>	San Jacinto Prickly-phlox	Mixed Conifer Forest	G2
<i>Calochortus simulans</i>	San Luis Obispo Mariposa Lily	Mixed Conifer Forest	G2
<i>Ivesia argyrocoma</i>	Silver-haired Ivesia	Mixed Conifer Forest	G2
<i>Marina orcuttii</i>	Sonoran Desert Marina	Mixed Conifer Forest	G2

All management recommendations assume that operators and land managers are following all applicable BMPs, laws, and regulations.

SOUTHERN CALIFORNIA MOUNTAINS ECOREGION



G1 and G2 Species Habitat Management Guidelines

SCIENTIFIC NAME	COMMON NAME	HABITAT	STATUS
<i>Draba corrugata</i>	Southern California Whitlow-grass	Mixed Conifer Forest	G2
<i>Cupressus forbesii</i>	Tecate Cypress	Mixed Conifer Forest	G2
<i>Thysanocarpus rigidus</i>		Mixed Conifer Forest	G2
<i>Pyrgulopsis greggi</i>	Kern River Pyrg	Riparian/Streams	G1
<i>Batrachoseps relictus</i>	Relictual Slender Salamander	Riparian/Streams	G1
<i>Plebulina emigdionis</i>	San Emigdio Blue	Riparian/Streams	G1
<i>Catostomus santaanae</i>	Santa Ana Sucker	Riparian/Streams	G1
<i>Hydroporus simplex</i>	Simple Hydroporus Diving Beetle	Riparian/Streams	G1
<i>Rana muscosa</i>	Southern Mountain Yellow-legged Frog	Riparian/Streams	G1
<i>Gila orcuttii</i>	Arroyo Chub	Riparian/Streams	G2
<i>Anaxyrus californicus</i>	Arroyo Toad	Riparian/Streams	G2
<i>Rana draytonii</i>	California Red-legged Frog	Riparian/Streams	G2
<i>Malacothamnus davidsonii</i>	Davidson's Bushmallow	Riparian/Streams	G2
<i>Heuchera brevistaminea</i>	Laguna Heuchera	Riparian/Streams	G2
<i>Mimulus exiguus</i>	San Bernardino Mountain Monkeyflower	Riparian/Streams	G2
<i>Dudleya densiflora</i>	San Gabriel Mountains Dudleya	Riparian/Streams	G2
<i>Clinopodium chandleri</i>	San Miguel Savory	Riparian/Streams	G2
<i>Hemizonia floribunda</i>	Tecate Tarweed	Riparian/Streams	G2
<i>Batrachoseps stebbinsi</i>	Tehachapi Slender Salamander	Riparian/Streams	G2
<i>Drymocallis cuneifolia</i>	Wedgeleaf Drymocallis	Riparian/Streams	G2
<i>Spea hammondi</i>	Western Spadefoot	Riparian/Streams	G2
<i>Castilleja cinerea</i>	Ash Grey Indian-paintbrush	Shrubland/Chaparral	G1
<i>Thermopsis macrophylla</i>	California Golden-banner	Shrubland/Chaparral	G1
<i>Orcuttia californica</i>	California Orcutt Grass	Shrubland/Chaparral	G1
<i>Astragalus albens</i>	Cushenbury Milkvetch	Shrubland/Chaparral	G1
<i>Psychomastax deserticola</i>	Desert Monkey Grasshopper	Shrubland/Chaparral	G1
<i>Tharsalea hermes</i>	Hermes Copper	Shrubland/Chaparral	G1
<i>Berberis nevinii</i>	Nevin's Barberry	Shrubland/Chaparral	G1
<i>Atriplex parishii</i>	Parish's Saltbush	Shrubland/Chaparral	G1
<i>Linanthus bernardinus</i>	Pioneertown Linanthus	Shrubland/Chaparral	G1
<i>Lepechinia rossii</i>	Ross' Pitcher Sage	Shrubland/Chaparral	G1
<i>Ceanothus ophiochilus</i>	Vail Lake Ceanothus	Shrubland/Chaparral	G1
<i>Astragalus brauntonii</i>	Braunton's Milkvetch	Shrubland/Chaparral	G2
<i>Sidalcea hickmanii</i>	Chaparral Checkerbloom	Shrubland/Chaparral	G2
<i>Linanthus bellus</i>	Desert Beauty	Shrubland/Chaparral	G2
<i>Packera ganderi</i>	Gander's Ragwort	Shrubland/Chaparral	G2
<i>Ribes canthariforme</i>	Moreno Currant	Shrubland/Chaparral	G2
<i>Arctostaphylos rainbowensis</i>	Rainbow Manzanita	Shrubland/Chaparral	G2

All management recommendations assume that operators and land managers are following all applicable BMPs, laws, and regulations.

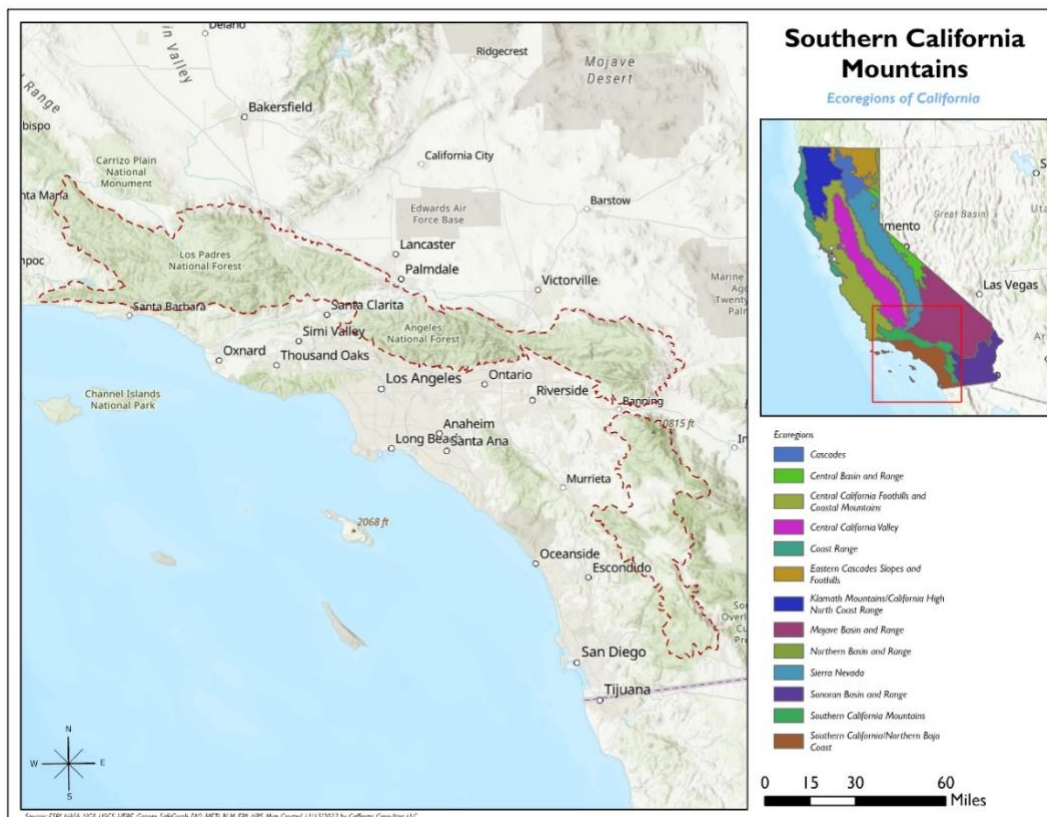
SOUTHERN CALIFORNIA MOUNTAINS Ecoregion



G1 and G2 Species Habitat Management Guidelines

SCIENTIFIC NAME	COMMON NAME	HABITAT	STATUS
<i>Perognathus alticola</i>	White-eared Pocket Mouse	Shrubland/Chaparral	G2
<i>Stygobromus rudolphi</i>	Rudolph's Amphipod	Springs	G1
<i>Branchinecta conservatio</i>	Conservancy Fairy Shrimp	Temporary Pools	G2
<i>Brodiaea orcuttii</i>	Orcutt's Brodiaea	Temporary Pools	G2
<i>Poa atropurpurea</i>	San Bernardino Bluegrass	Wet Meadow	G2
<i>Diplectrona californica</i>	California Diplectronan Caddisfly	Wetland	G1
<i>Layia munzii</i>	Munz's Tidy-tips	Wetland	G2
<i>Packera bernardina</i>	San Bernardino Butterweed	Wetland	G2

*Species links provided when available



All management recommendations assume that operators and land managers are following all applicable BMPs, laws, and regulations.