

WASHINGTON WEST CASCADES ECOREGION

G1 and G2 Species Habitat Management Guidelines



INTRODUCTION

The Sustainable Forestry Initiative® (SFI) [2022 Standards](#) include requirements that promote and conserve Forests with Exceptional Conservation Value (FECV), which includes critically imperiled (G1) and imperiled (G2) species. This fact sheet summarizes the analysis of FECV habitat within this ecoregion and provides habitat management recommendations that would benefit species potentially found here.

HABITAT TYPES

- Forest Edge
- Mixed Conifer Forest
- Riparian, Streams, Wetlands
- Special Sites (Cliff, Grassland)

FOREST EDGE MANAGEMENT

- Protect known locations
- Apply buffers or light touch
- Provide floral resources such as Asters, Chrysothamnus, and Cirsium

MIXED CONIFER FOREST MANAGEMENT

- Protect known locations
- Retain legacy trees, stumps, and logs
- Retain large diameter trees with cavities or broken tops
- Leave skips and gaps with dense shrub component
- Retain large slash into piles

RIPARIAN, STREAMS, WETLANDS MANAGEMENT

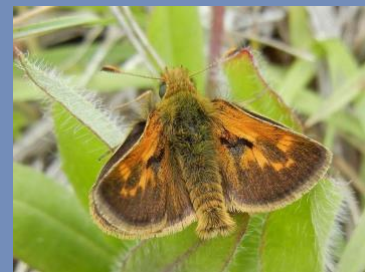
- Protect known locations
- Maintain well vegetated buffers
- Plant a diversity of both hardwood and conifer trees
- Retain large diameter trees
- Buffer wetlands, springs, and headwater areas

SPECIAL SITE (CLIFF, GRASSLAND) MANAGEMENT

- Protect known locations
- Buffer special sites



Mount Rainier Lousewort



Mardon Skipper



Fringed Kittentails

All management recommendations assume that operators and land managers are following all applicable BMPs, laws, and regulations.

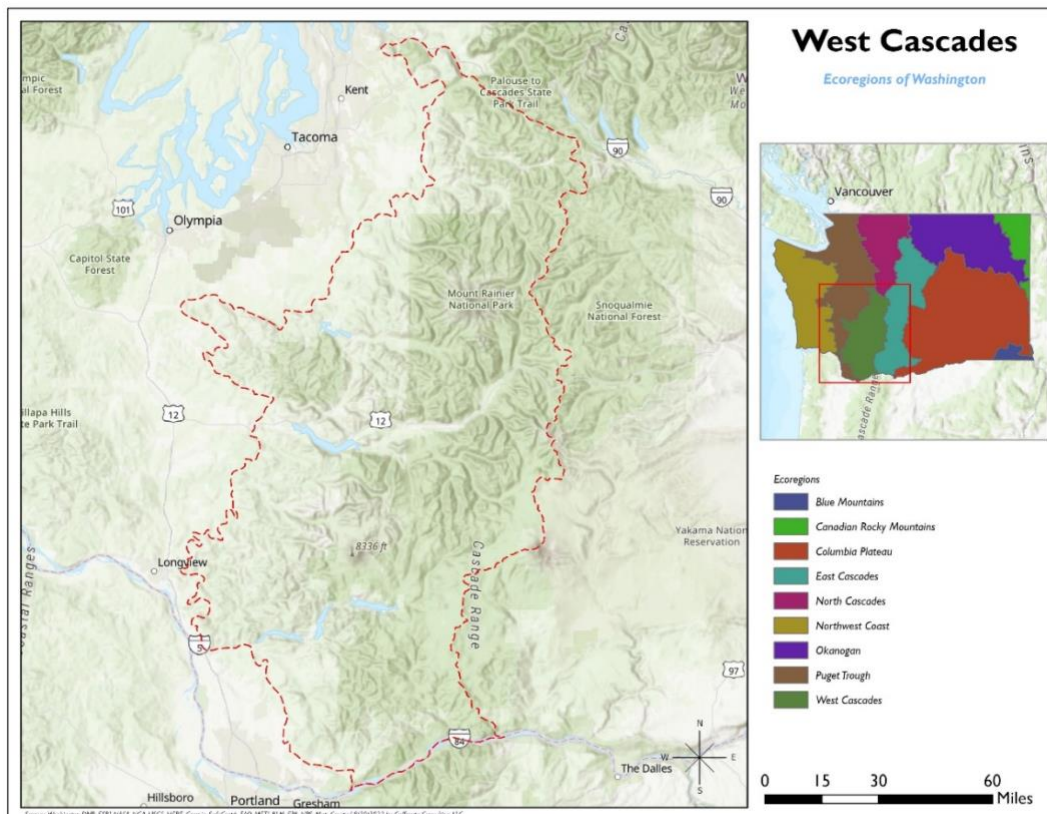
WASHINGTON WEST CASCADES ECOREGION

G1 and G2 Species Habitat Management Guidelines



SCIENTIFIC NAME	COMMON NAME	HABITAT	STATUS
<i>Erigeron howellii</i>	Howell's Fleabane	Cliff	G2
<i>Bombus suckleyi</i>	Suckley bumble bee	Forest Edge	G1G3
<i>Polites mardon</i>	Mardon Skipper	Grassland	G2G3
<i>Synthyris schizantha</i>	Fringed Kittenails	Mixed Conifer Forest	G2
<i>Pedicularis rainierensis</i>	Mount Rainier Lousewort	Mixed Conifer Forest	G2G3
<i>Juga sp. 3</i>	Brown juga	Riparian or Streams	G1
<i>Juga sp. 7</i>	Three-band juga	Riparian or Streams	G1
<i>Cryptomastix hendersoni</i>	Columbia Oregonian	Riparian or Streams	G1G2
<i>Juga sp. 1</i>	Basalt juga	Riparian or Streams	G2
<i>Sidalcea hirtipes</i>	Bristly-stem Sidalcea	Riparian or Streams	G2
<i>Sullivantia oregana</i>	Oregon Sullivantia	Riparian or Streams	G2
<i>Eanus hatchi</i>	Hatch's Click Beetle	Wetland	G1
<i>Sisyrinchium sarmentosum</i>	Pale Blue-eyed-grass	Wetland	G2
<i>Castilleja cryptantha</i>	Obscure Indian-paintbrush	Wetland	G2G3

*species links provided when available



All management recommendations assume that operators and land managers are following all applicable BMPs, laws, and regulations.