

OREGON WILLAMETTE VALLEY ECOREGION

G1 and G2 Species Habitat Management Guidelines



INTRODUCTION

The Sustainable Forestry Initiative® (SFI) [2022 Standards](#) include requirements that promote and conserve Forests with Exceptional Conservation Value (FECV), which includes critically imperiled (G1) and imperiled (G2) species. This fact sheet summarizes the analysis of FECV habitat within this ecoregion and provides habitat management recommendations that would benefit species potentially found here.

HABITAT TYPES

- Forest Edge
- Mixed Conifer Forest
- River/Riparian

FOREST EDGE MANAGEMENT

- Protect known locations
- Buffer special sites

MIXED CONIFER FOREST MANAGEMENT

- Protect known locations
- Retain legacy trees, stumps, and logs
- Retain large diameter trees with cavities or broken tops
- Leave skips and gaps with dense shrub component
- Retain large slash into piles

RIVER/RIPARIAN MANAGEMENT

- Protect known locations
- Maintain well vegetated riparian buffers
- Plant a diversity of both hardwood and conifer trees in the riparian zone
- Retain large diameter trees near streams and rivers
- Buffer wetlands, springs, and headwater areas



Keeled jumping slug



California condor



Shortface lanx

OREGON WILLAMETTE VALLEY ECOREGION

G1 and G2 Species Habitat Management Guidelines

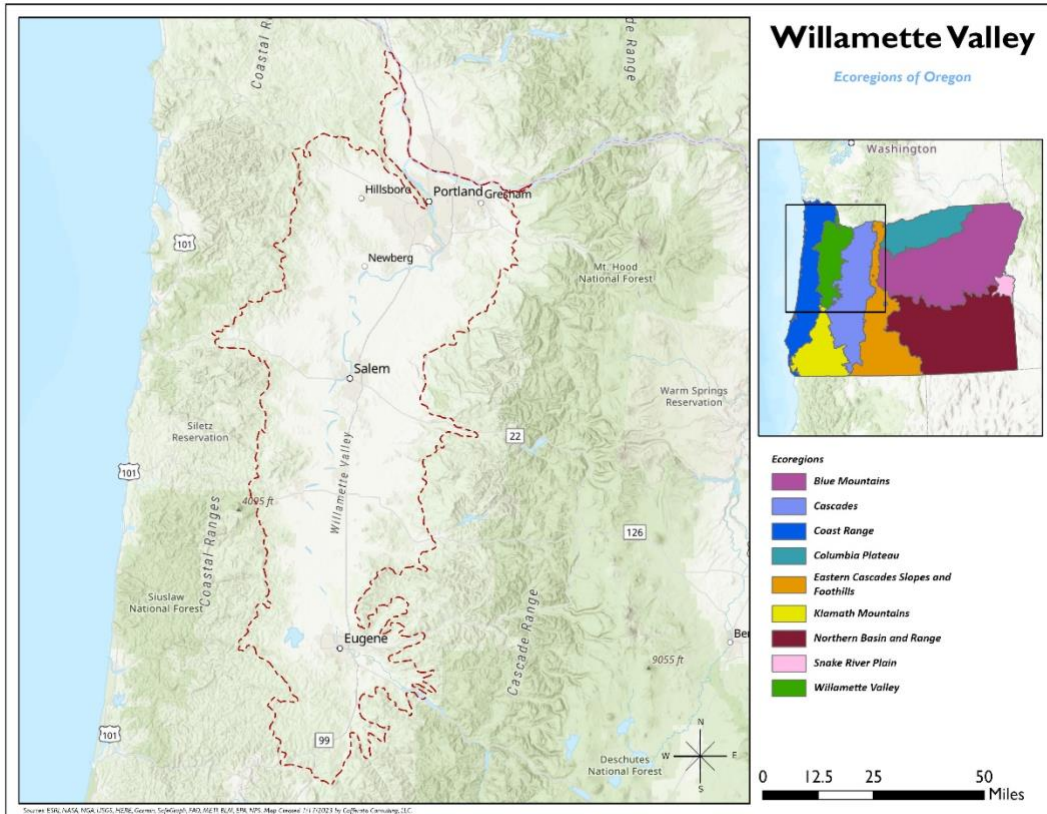


SCIENTIFIC NAME	COMMON NAME	HABITAT	Status
<i>Lupinus oregonus</i>	Kincaid's lupine	Forest Edge	G2
<i>Gymnogyps californianus</i>	California condor	Mixed Conifer Forest	G1
<i>Driloleirus macelfreshi</i>	Oregon giant earthworm	Mixed Conifer Forest	G1
<i>Sisyrinchium hitchcockii</i>	Hitchcock's blue-eyed grass	Mixed Conifer Forest	G1G2
<i>Hemphillia burringtoni</i>	Keeled jumping-slug	Mixed Conifer Forest	G1G2
<i>Cryptomastix devia</i>	Puget oregonian (snail)	Mixed Conifer Forest	G2
<i>Delphinium leucophaeum</i>	White rock larkspur	Mixed Conifer Forest	G2
<i>Ribes erythrocarpum</i>	Crater Lake Currant	Mixed Conifer Forest	G2
<i>Vespericola sp. 2</i>	Bald hesperian (snail)	River/Riparian	G1
<i>Sphaerocarpos hians</i>	Liverwort	River/Riparian	G1
<i>Capnia kersti</i>	A stonefly	River/Riparian	G1G2
<i>Pristiloma pilsbryi</i>	Crowned tightcoil (snail)	River/Riparian	G1G2
<i>Dumontia oregonensis</i>	A water flea	River/Riparian	G1G3
<i>Juga sp. 3</i>	Brown juga (snail)	River/Riparian	G1Q
<i>Physella hordacea</i>	Grain physa (snail)	River/Riparian	G1Q
<i>Vorticifex neritoides</i>	Nerite ramshorn (snail)	River/Riparian	G1Q
<i>Vespericola sp. 31</i>	Yamhill hesperian (snail)	River/Riparian	G1Q
<i>Fluminicola fuscus</i>	Columbia pebblesnail	River/Riparian	G2
<i>Fluminicola virens</i>	Olympia pebblesnail	River/Riparian	G2
<i>Sullivantia oregana</i>	Oregon sullivantia	River/Riparian	G2
<i>Fisherola nuttalli</i>	Shortface lanx (=Giant Columbia River limpet)	River/Riparian	G2
<i>Ramellogammarus similimanus</i>	Stumptown scud	River/Riparian	G2
<i>Lathyrus holochlorus</i>	Thin-leaved peavine	River/Riparian	G2

*species links provided when available

OREGON WILLAMETTE VALLEY ECOREGION

G1 and G2 Species Habitat Management Guidelines



All management recommendations assume that operators and land managers are following all applicable BMPs, laws, and regulations.