

CENTRAL ROCKIES WYOMING BASIN ECOREGION

G1 and G2 Species Habitat Management Guidelines



INTRODUCTION

The Sustainable Forestry Initiative® (SFI) [2022 Standards](#) include requirements that promote and conserve Forests with Exceptional Conservation Value (FECV), which includes critically imperiled (G1) and imperiled (G2) species. This fact sheet summarizes the analysis of FECV habitat within this ecoregion and provides habitat management recommendations that would benefit species potentially found here.

HABITAT TYPES

- Special Sites

SPECIAL SITE MANAGEMENT

- Protect known locations
- Buffer special sites
- Provide cover (woody debris, rocks, leaf litter, etc.) at sites where Pygmy Mountainsnail has been documented



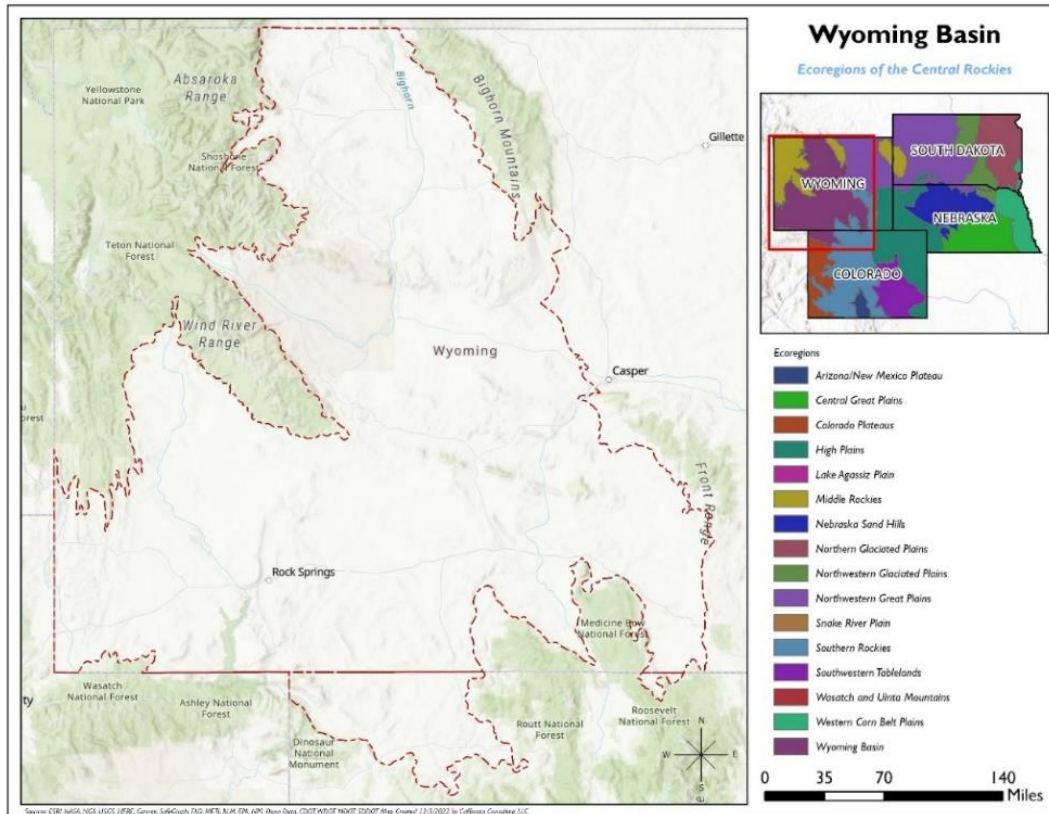
CENTRAL ROCKIES

WYOMING BASIN ECOREGION



G1 and G2 Species Habitat Management Guidelines

SCIENTIFIC NAME	COMMON NAME	HABITAT	STATUS
<i>Oreohelix pygmaea</i>	<u>Pygmy Mountainsnail</u>	Special Site	G2



All management recommendations assume that operators and land managers are following all applicable BMPs, laws, and regulations.