

# IDAHO WYOMING BASIN ECOREGION

## G1 and G2 Species Habitat Management Guidelines



### INTRODUCTION

The Sustainable Forestry Initiative® (SFI) [2022 Standards](#) include requirements that promote and conserve Forests with Exceptional Conservation Value (FECV), which includes critically imperiled (G1) and imperiled (G2) species. This fact sheet summarizes the analysis of FECV habitat within this ecoregion and provides habitat management recommendations that would benefit species potentially found here.

### HABITAT TYPES

- Riparian or Stream
- Mixed Conifer Forest

### RIPARIAN OR STREAM MANAGEMENT

- Protect known locations
- Maintain well vegetated riparian buffers
- Plant a diversity of both hardwood and conifer trees in the riparian zone
- Retain large diameter trees near streams and rivers
- Buffer wetlands, springs, and headwater areas

### MIXED CONIFER FOREST MANAGEMENT

- Protect known locations
- Retain legacy trees, stumps, and logs
- Retain large diameter trees with cavities or broken tops
- Leave skips and gaps with dense shrub component
- Retain large slash into piles



**Whooping Crane**



**Thickleaf Pepperwort**



**Winward's Whitestem Goldenbush**

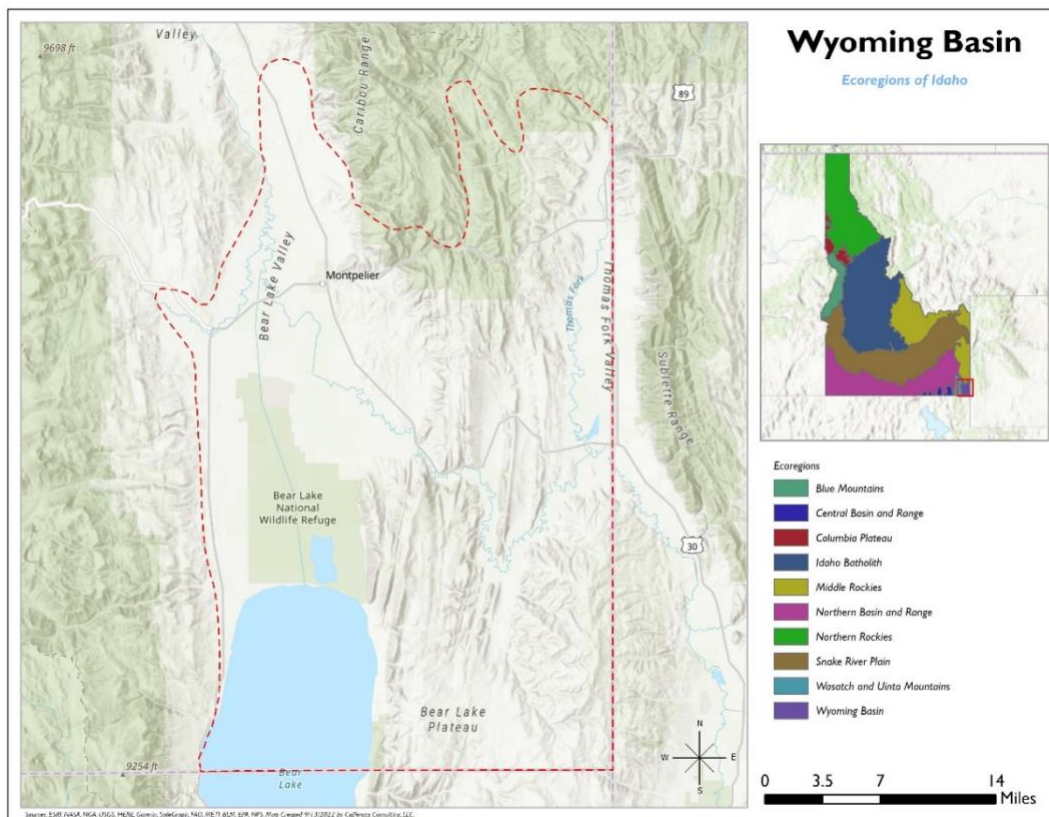
*All management recommendations assume that operators and land managers are following all applicable BMPs, laws, and regulations.*

# IDAHO WYOMING BASIN ECOREGION

## G1 and G2 Species Habitat Management Guidelines

SCIENTIFIC NAME	COMMON NAME	HABITAT	STATUS
<i>Helisoma newberryi</i>	<a href="#">Great Basin Rams-horn</a>	Riparian or Streams	G1
<i>Grus americana</i>	<a href="#">Whooping Crane</a>	Riparian or Streams	G1
<i>Lepidium integrifolium</i>	<a href="#">Thickleaf Pepperwort</a>	Riparian or Streams	G2G3
<i>Ericameria winwardii</i>	<a href="#">Winward's Whitestem Goldenbush</a>	Mixed Conifer Forest	G1

\*Species links provided when available



All management recommendations assume that operators and land managers are following all applicable BMPs, laws, and regulations.