

# MONTANA WYOMING BASIN ECOREGION

## G1 and G2 Species Habitat Management Guidelines



### INTRODUCTION

The Sustainable Forestry Initiative® (SFI) [2022 Standards](#) include requirements that promote and conserve Forests with Exceptional Conservation Value (FECV), which includes critically imperiled (G1) and imperiled (G2) species. This fact sheet summarizes the analysis of FECV habitat within this ecoregion and provides habitat management recommendations that would benefit species potentially found here.

### HABITAT TYPES

- Bare Rock/Talus
- Mixed Conifer Forest
- Shrubland

### BARE ROCK/TALUS MANAGEMENT

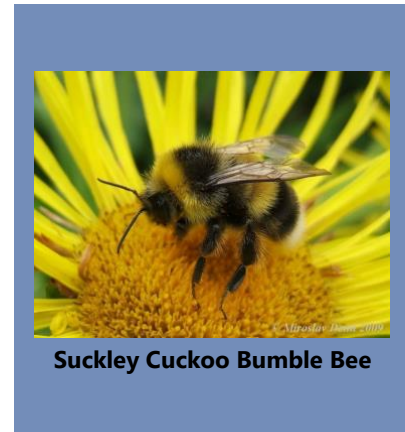
- Protect known locations
- Provide buffers

### MIXED CONIFER FOREST MANAGEMENT

- Protect known locations
- Retain legacy trees, stumps, and logs
- Retain large diameter trees with cavities or broken tops
- Leave skips and gaps with dense shrub component
- Retain large slash into piles

### SHRUBLAND MANAGEMENT

- Protect known locations
- Provide floral resources such as Asters, Chrysothamnus, and Cirsium
- Provide buffers



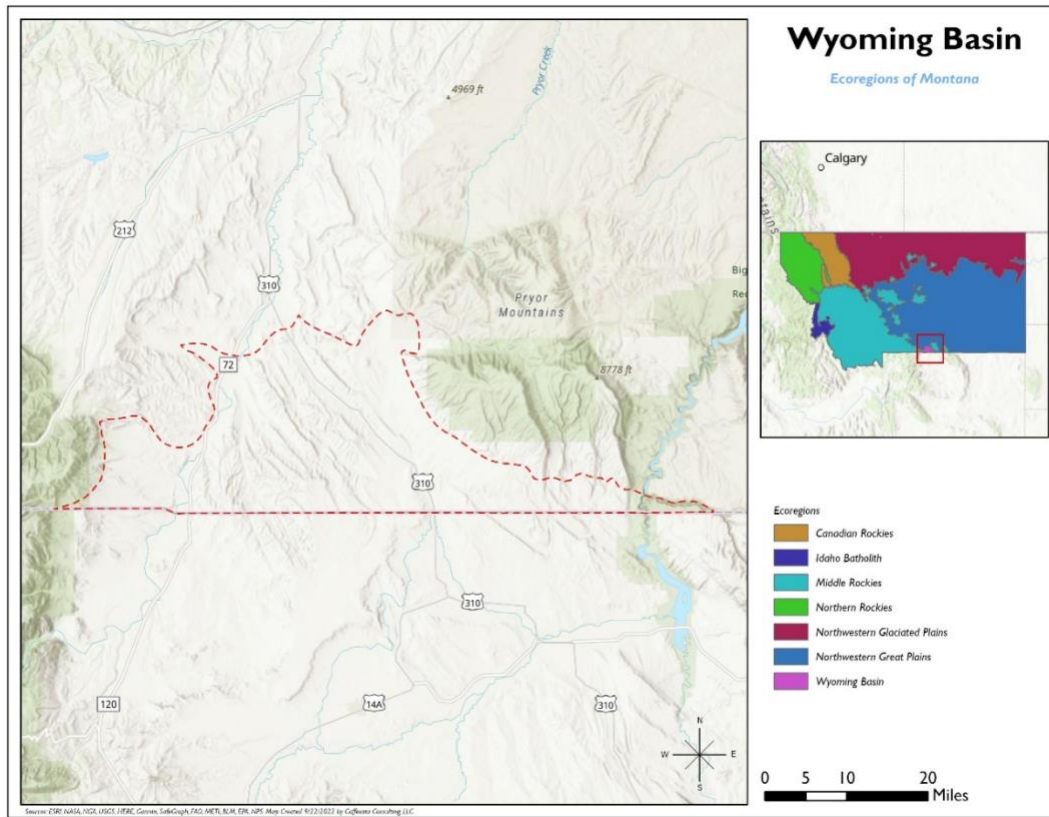
# MONTANA WYOMING BASIN ECOREGION

## G1 and G2 Species Habitat Management Guidelines



SCIENTIFIC NAME	COMMON NAME	HABITAT	STATUS
<a href="#">Erigeron parryi</a>	<a href="#">Parry's Fleabane</a>	Bare Rock/Talus	G2G3
<a href="#">Physaria lesicii</a>	<a href="#">Lesica's Bladderpod</a>	Mixed Conifer Forest	G2
<a href="#">Bombus suckleyi</a>	<a href="#">Suckley Cuckoo Bumble Bee</a>	Shrubland	G2G3

\*species links provided when available



All management recommendations assume that operators and land managers are following all applicable BMPs, laws, and regulations.